

Product Descriptions

RF Ceiling Fan Remote Control Kit

Model #: AS-CF239N

(Please visit our website www.a-brt.com for more info)



Features:

AS-CF239N ceiling fan remote control kit utilizes 433.92MHz radio frequency control technology. It consists of a remote control and a rectangular shape receiver. It is designed for easy installation and operation.

- Good for all ceiling fans;
- Two load outputs, one for controlling the fan and another one for controlling the lights;
- Three fan speeds;
- ABS-V0 flame resistance material; and
- Elegant design and high quality build.

What Are Included?

AS-CF239N ceiling fan remote control kit consists of two pieces, as shown in Fig. 1.



Fig. 1 AS-CF239N Ceiling Fan Remote Control Kit

- An RF remote control unit with a wall mount bracket; and
- A rectangular shape receiver that can receive control commands from the remote control unit. This receiver uses existing wiring and can easily fit into the canopy of the ceiling fans.

Specification Parameters:

Input Voltage	220~240V/50Hz~60Hz	Operation Environment	No-condensation 20-90% RH, -20℃~55℃
Fan Wattage	150W	Light Wattage	600W
Battery for Remote Control	6F22 9V Battery	Working Distance of Remote Control	12m
Remote Control Dimension	138mm x 49mm x 23mm	Receiver Dimension	120mm x 53mm x 23mm
Remote Control Weight	55g	Receiver Weight	105g

Wiring Diagram and Installation Guide:

AS-CF239N remote control unit is battery driven and there is no wiring requirement. The receiver has its all connection wires clearly labelled, as shown in Fig. 3.

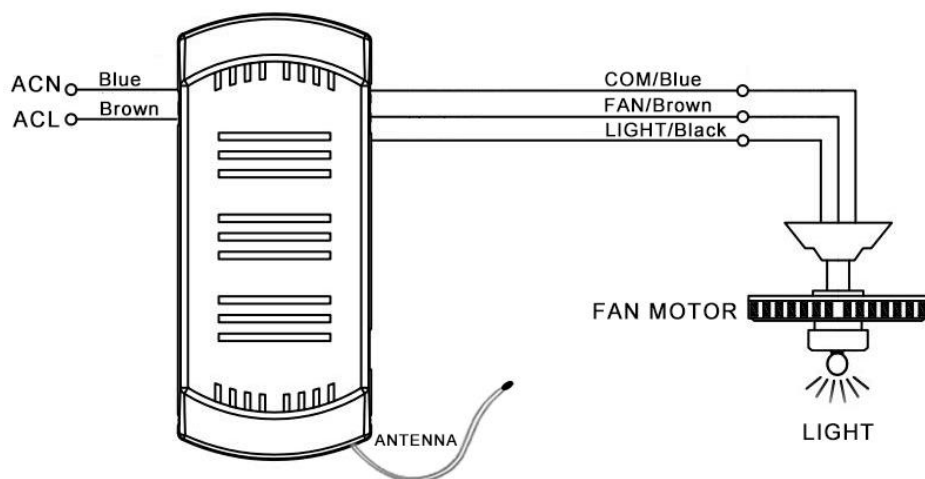


Fig. 3 AS-CF239N Receiver Wiring Diagram

ACL: Connected to the hot wire of power supply
ACN: Connected to the neutral wire of power supply
Light: Connected to the lights
Motor: Connected to the fan
COM: Connected to the neutral wire of the fan and/or lights
Antenna: No connection

Warning: Please make sure power is turned off before starting installation!

Once properly wired, the AS-CF239N receiver can be installed into the canopy of the ceiling fan, as shown in Fig. 4.

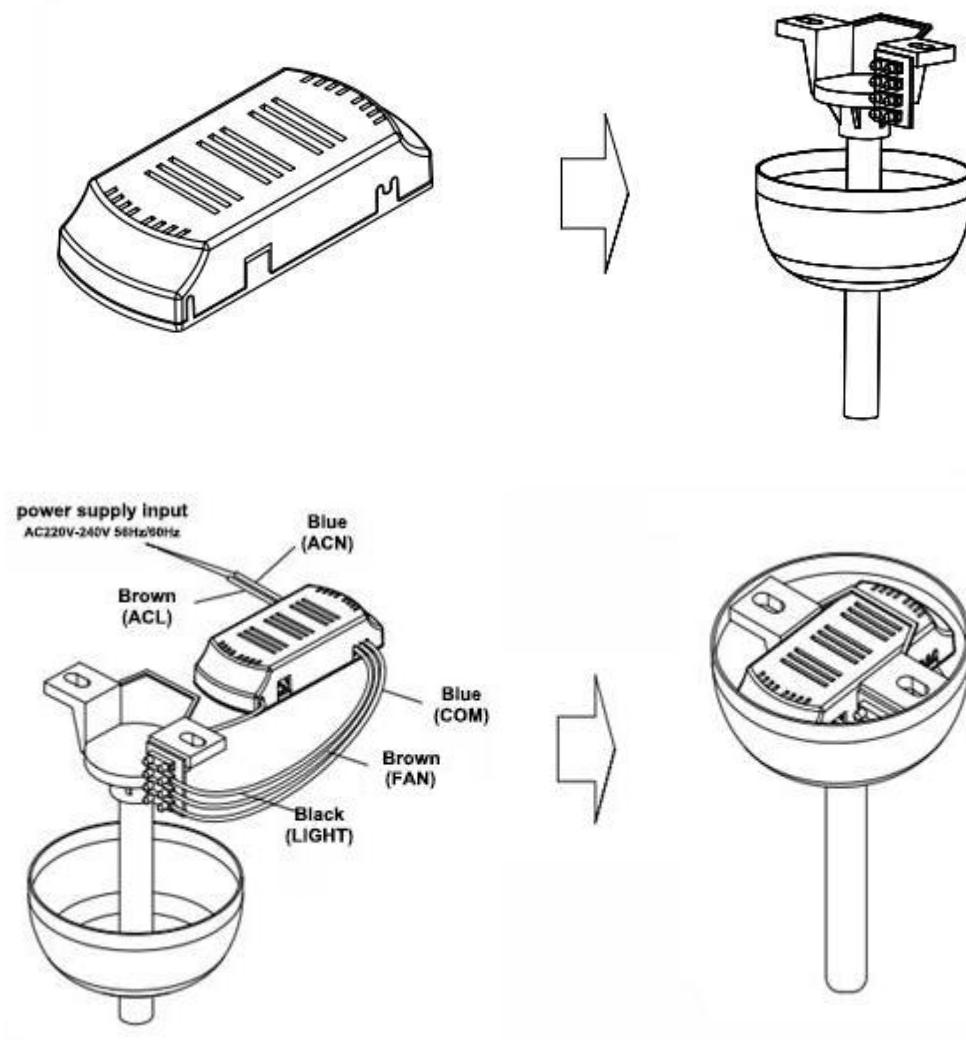


Fig. 4 AS-CF239N Receiver Installation

Product Description AS-CF239N

Shenzhen Asia Bright Co., Ltd.

Floor 2nd~3rd, Building E, North Area No.2 of Shangxue Science Park, Bantian, Shenzhen, China

www.a-brt.com sales@a-brt.com

© 2022 All rights reserved. Subject to change without notices.

Setup and Operation Guide:

Fig. 5 shows the front and the back of the remote control unit. Before operating ceiling fan and lights, please complete the following two procedures:

- a. The remote control unit uses one 6F22 9V battery. Please open the sliding cover and install the battery.
- b. Turn on the power supply to the ceiling fan and lights. If there is another switch to control the fan speed and the lights, please set the switch to the highest fan speed and turn on the lights.

Now, it is ready to control the ceiling fan and lights using the remote control unit.

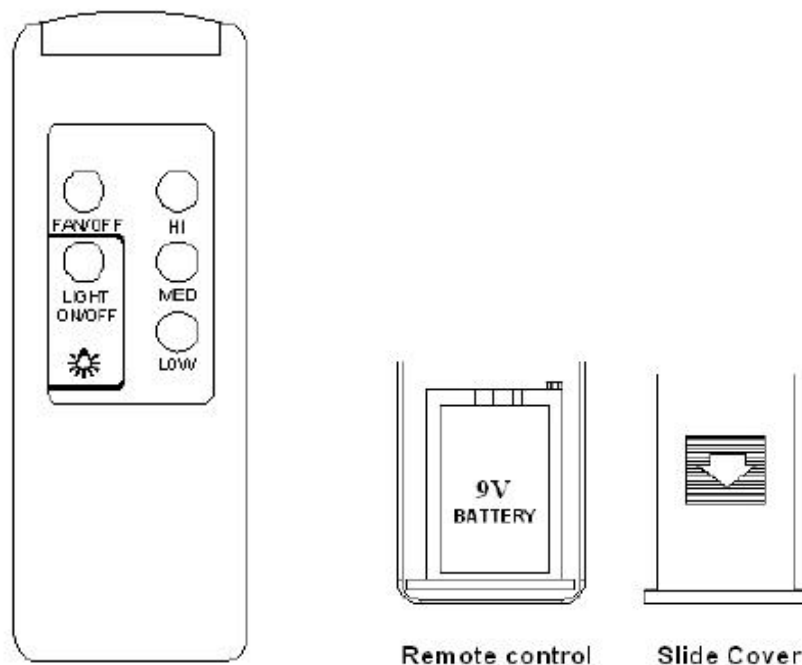


Fig. 5 AS-CF239N Remote Control Unit

- 1. Turn on fan:** The remote control unit has three buttons LOW, MED, and HI. Pressing each of these three buttons will turn on the fan and set the fan to low speed, medium speed and high speed respectively.
- 2. Turn off fan:** Pressing the FAN/OFF button will turn off the fan.
- 3. Turn on or turn off light:** Pressing the LIGHT ON/OFF button will turn on or turn off the lights. When the light is on, the displayed light indicator is on.

Applications:

AS-CF239N ceiling fan remote control kit good is for all kind of ceiling fans, even for retrofitting an older ceiling fan. It can bring convenience and ease to our daily life and work.

They have wide applications at various locations such as homes, restaurants, conference rooms, theatres, etc.

How to Order:

Please contact us: Shenzhen Asia Bright Co., Ltd
Floor 2nd~3rd, Building E, North Area No.2 of Shangxue
Science Park, Bantian, Shenzhen, China
Tel: +86-755-89748200 +86-755-89748211
Email: sales@a-brt.com Website: www.a-brt.com