

## Product Descriptions

### Infrared Ceiling Fan Remote Control Kit

**Model #:** AS-CF236N

(Please visit our website [www.a-brt.com](http://www.a-brt.com) for more info)



#### **Features:**

AS-CF236N ceiling fan remote control kit utilizes infrared control technology. It consists of a remote control and a rectangular shape receiver. It is designed for easy installation and operation.

- Good for all ceiling fans;
- Two load outputs, one for controlling the fan and another one for controlling the lights;
- Three fan speeds;
- ABS-V0 flame resistance material; and
- Elegant design and high quality build.

#### **What Are Included?**

AS-CF236N ceiling fan remote control kit consists of two pieces, as shown in Fig. 1.



**Fig. 1** AS-CF236N Ceiling Fan Remote Control Kit

- An infrared remote control unit with a wall mount bracket; and

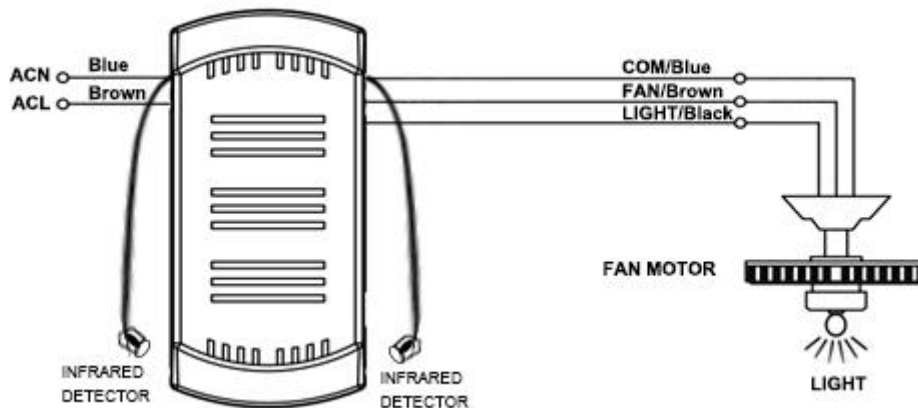
- A rectangular shape receiver that can receive control commands from the remote control unit. This receiver uses existing wiring and can easily fit into the canopy of the ceiling fans.

#### Specification Parameters:

Input Voltage	220~240V(50Hz/60Hz)	Operation Environment	No-condensation 20-90% RH, -20℃~55℃
Fan Wattage	150W	Light Wattage	600W
Battery for Remote Control	6F22 9V Battery	Working Distance of Remote Control	5m
Remote Control Dimension	138mm x 49mm x 23mm	Receiver Dimension	120mm x 53mm x 23mm
Remote Control Weight	55g	Receiver Weight	105g

#### Wiring Diagram and Installation Guide:

AS-CF236N remote control unit is battery driven and there is no wiring requirement. The receiver has its all connection wires clearly labelled, as shown in Fig. 3.



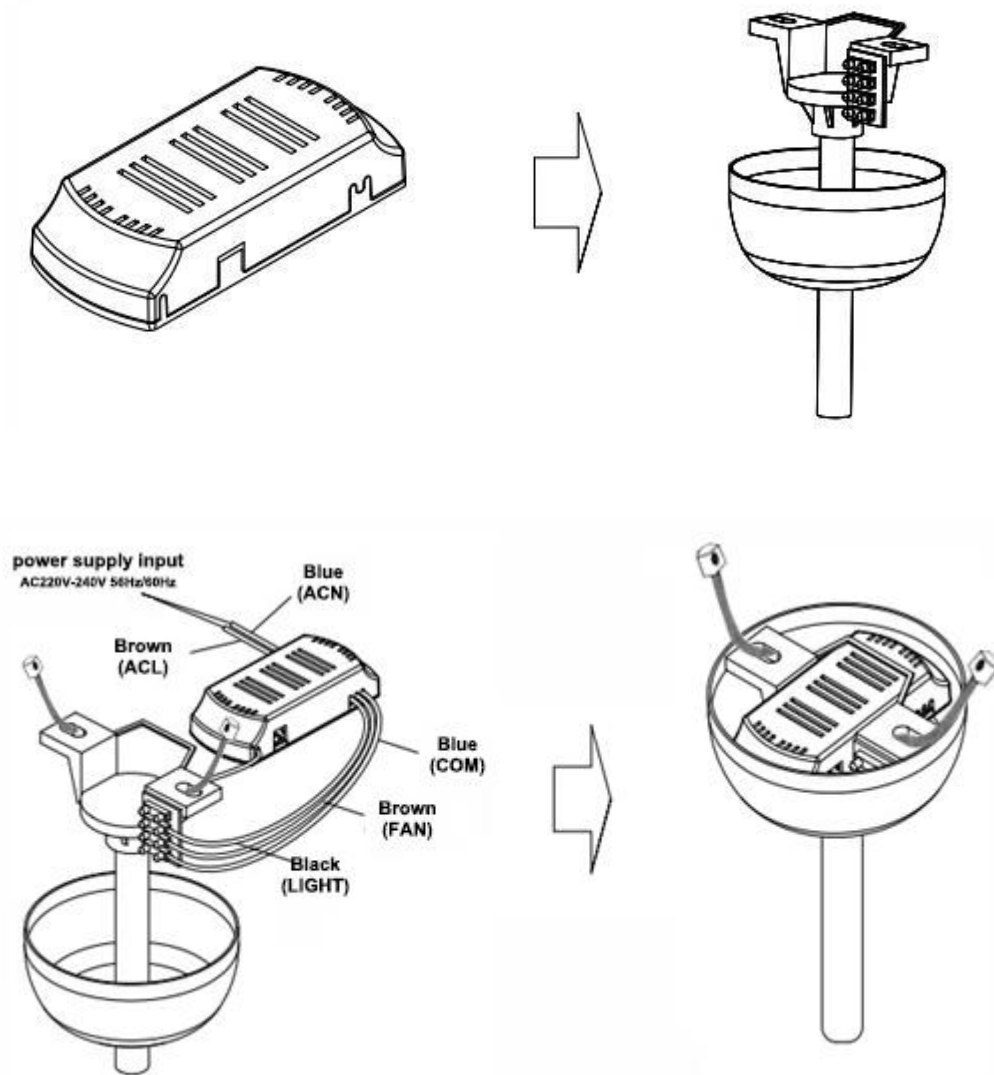
**Fig. 3** AS-CF236N Receiver Wiring Diagram

ACL: Connected to the hot wire of power supply  
 ACN: Connected to the neutral wire of power supply  
 LIGHT: Connected to the lights

FAN: Connected to the fan  
COM: Connected to the neutral wire of the fan and/or lights

**Warning:** Please make sure power is turned off before starting installation!

Once properly wired, the AS-CF236N receiver can be installed into the canopy of the ceiling fan, as shown in Fig. 4.



**Fig. 4** AS-CF236N Receiver Installation

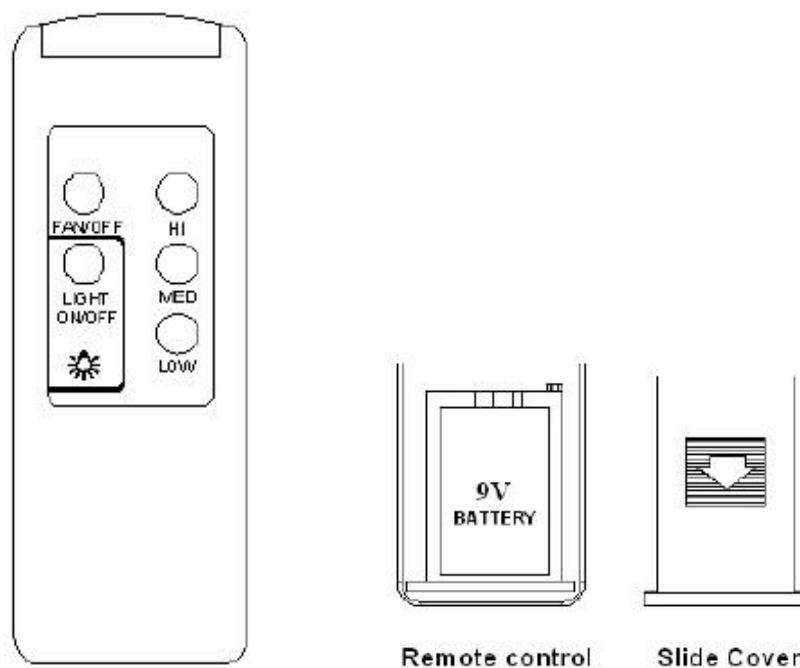
Note: The two infrared detectors should be arranged to face two orthogonal directions.

### **Setup and Operation Guide:**

Fig. 5 shows the front and the back of the remote control unit. Before operating ceiling fan and lights, please complete the following two procedures:

- a. The remote control unit uses one 6F22 9V battery. Please open the sliding cover and install the battery.
- b. Turn on the power supply to the ceiling fan and lights. If there is another switch to control the fan speed and the lights, please set the switch to the highest fan speed and turn on the lights.

Now, it is ready to control the ceiling fan and lights using the remote control unit.



**Fig. 5** AS-CF236N Remote Control Unit

- 1. Turn on fan:** The remote control unit has three buttons LOW, MED, and HI. Pressing each of these three buttons will turn on the fan and set the fan to low speed, medium speed and high speed respectively.
- 2. Turn off fan:** Pressing the FAN/OFF button will turn off the fan.

**3. Turn on or turn off light:** Pressing the LIGHT ON/OFF button will turn on or turn off the lights. When the light is on, the displayed light indicator is on.

### **Applications:**

AS-CF236N ceiling fan remote control kit good is for all kind of ceiling fans, even for retrofitting an older ceiling fan. It can bring convenience and ease to our daily life and work.

They have wide applications at various locations such as homes, restaurants, conference rooms, theatres, etc.

### **How to Order:**

Please contact us:     Shenzhen Asia Bright Co., Ltd  
Floor 2<sup>nd</sup>~3<sup>rd</sup>, Building E, North Area No.2 of Shangxue  
Science Park, Bantian, Shenzhen, China  
Tel:   +86-755-89748200    +86-755-89748211  
Email: [sales@a-brt.com](mailto:sales@a-brt.com)    Website: [www.a-brt.com](http://www.a-brt.com)