

Product Descriptions

Infrared Ceiling Fan Remote Control Kit

Model #: AS-CF126L

(Please visit our website www.a-brt.com for more info)



Features:

AS-CF126L ceiling fan remote control kit utilizes infrared control technology. It consists of a remote control with LCD display and a U shape receiver. It is designed for easy installation and operation.

- Good for all ceiling fans;
- Two load outputs, one for controlling the fan and another one for controlling the lights;
- Three fan speeds;
- Precise timer function;
- LCD status display of fans, lights, and timer;
- ABS-V0 flame resistance material; and
- Elegant design and high quality build.

What Are Included?

AS-CF126L ceiling fan remote control kit consists of two pieces, as shown in Fig. 1

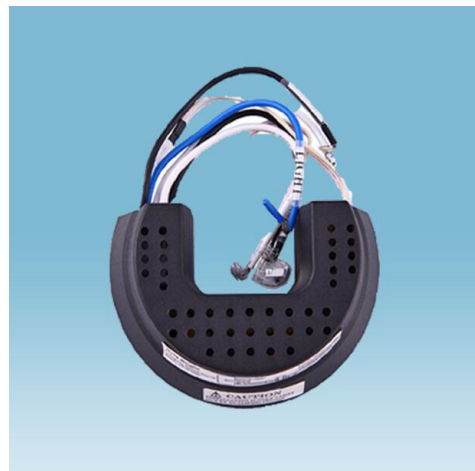


Fig. 1 AS-CF126L Ceiling Fan Remote Control Kit

- An infrared remote control unit with a wall mount bracket; and
- A U shape receiver that can receive control commands from the remote control unit.

This receiver uses existing wiring and can easily fit into the canopy of the ceiling fans.

Fig. 2 is a large view of the LCD display of AS-CF126L remote control unit. The displayed parameters include timer, fan speed, fan status and light status.

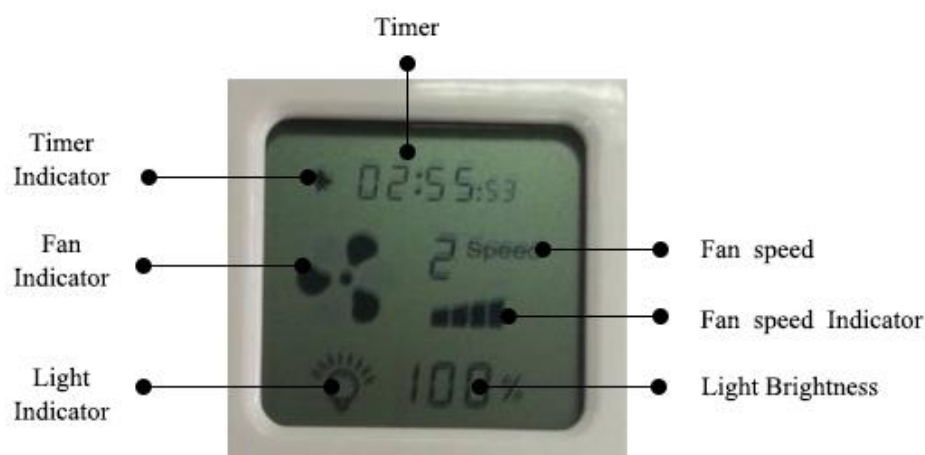


Fig. 2 LCD of AS-CF126L Remote Control Unit

Specification Parameters:

Input Voltage	220~240V(50Hz/60Hz)	Operation Environment	No-condensation 20-90% RH, -20℃~40℃
Fan Wattage	150W	Light Wattage	600W
Battery for Remote Control	23A, 12V	Working Distance of Remote Control	5m
Remote Control Dimension	100mm x 45mm x 12mm	Receiver Dimension	60mm in diameter

Wiring Diagram and Installation Guide:

AS-CF126L remote control unit is battery driven and there is no wiring requirement. The receiver

has its all connection wires clearly labelled, as shown in Fig. 3.

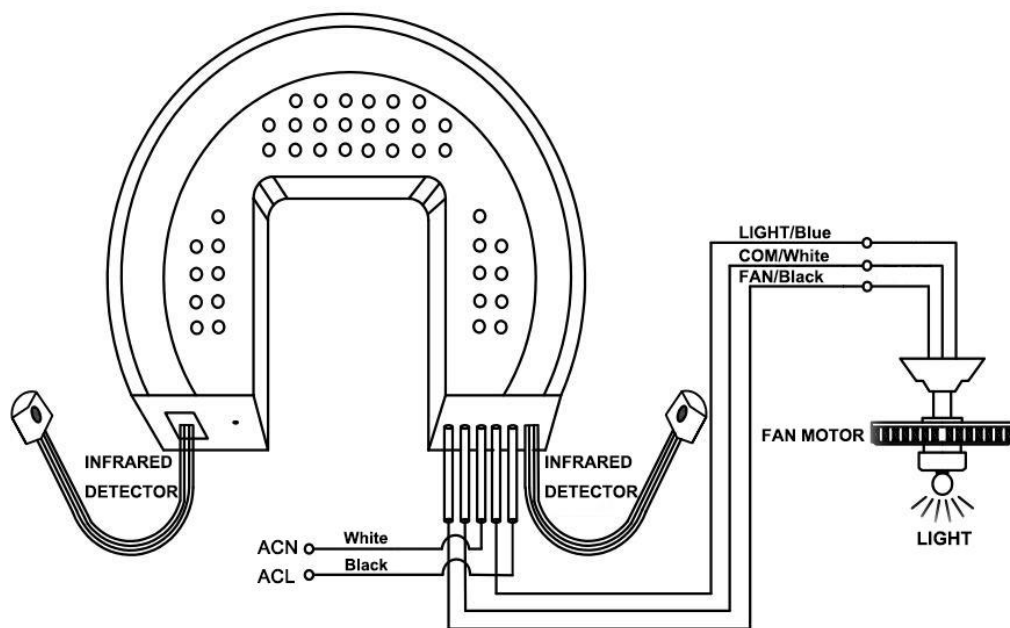


Fig. 3 AS-CF126L Receiver Wiring Diagram

- ACL: Connected to the hot wire of power supply
- ACN: Connected to the neutral wire of power supply
- Light: Connected to the lights
- Motor: Connected to the fan
- COM: Connected to the neutral wire of the fan and/or lights

Warning: Please make sure power is turned off before starting installation!

Once properly wired, the AS-CF126L receiver can be installed into the canopy of the ceiling fan, as shown in Fig. 4.

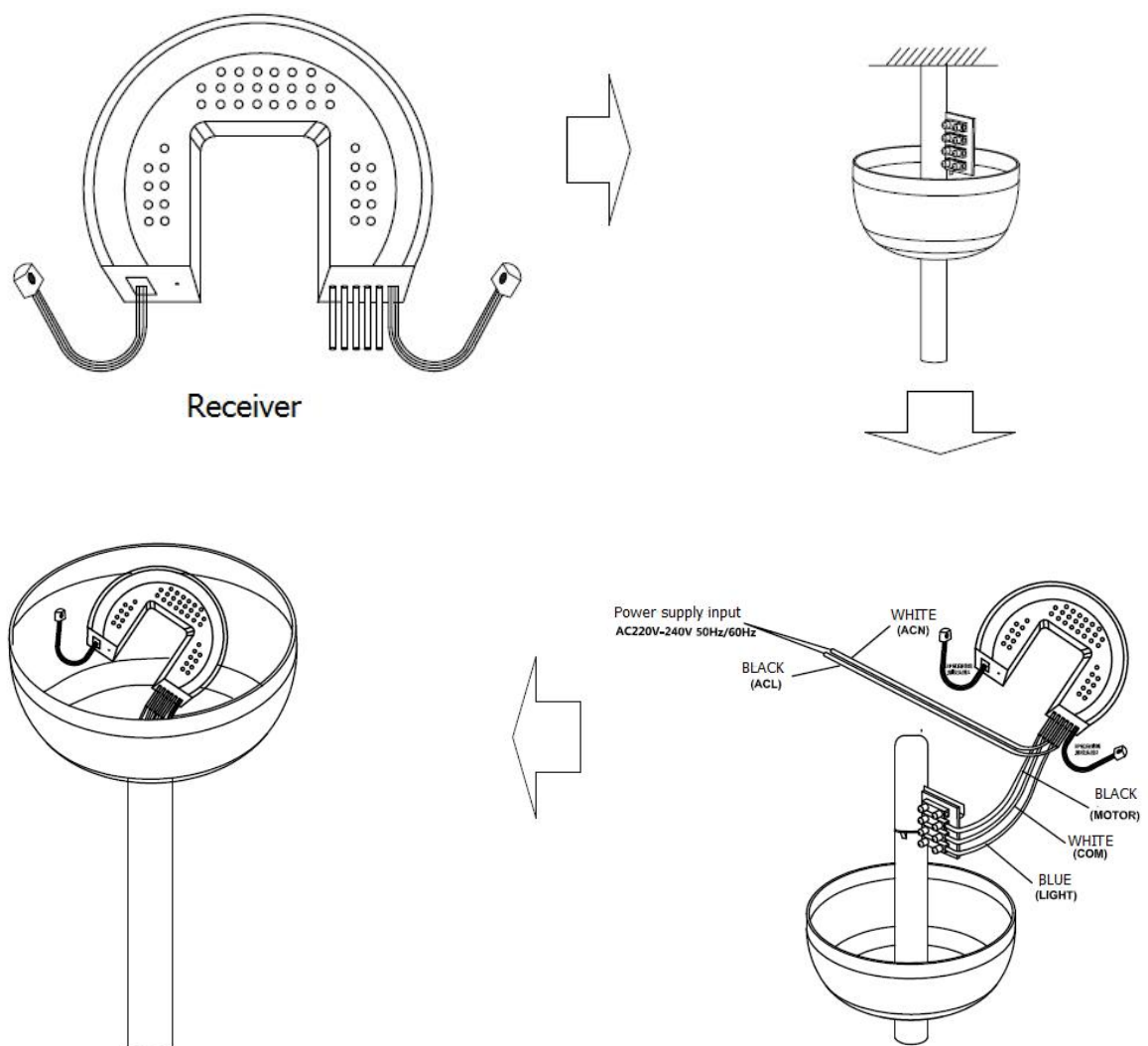


Fig. 4 AS-CF126L Receiver Installation

Note: The two infrared detectors should be arranged to face two orthogonal directions.

Product Description AS-CF126L

Shenzhen Asia Bright Co., Ltd.

Floor 2nd~3rd, Building E, North Area No.2 of Shangxue Science Park, Bantian, Shenzhen, China

www.a-brt.com sales@a-brt.com

© 2023 All rights reserved. Subject to change without notices.

Setup and Operation Guide:

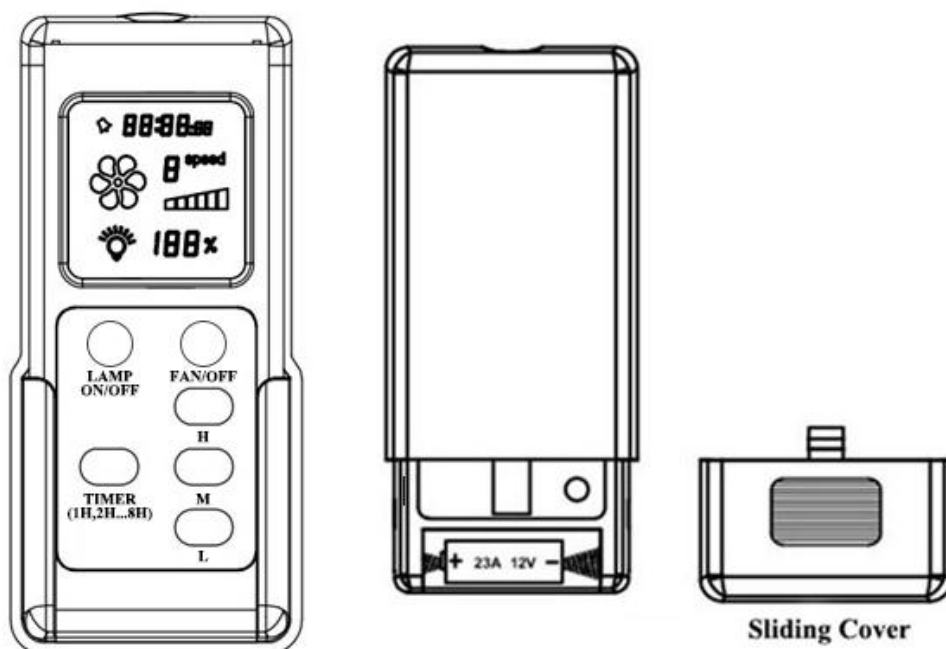
Fig. 5 shows the front and the back of the remote control unit. Before operating ceiling fan and lights, please complete the following two procedures:

- a. The remote control unit uses one 23A 12V battery. Please open the sliding cover and install the battery.
- b. Turn on the power supply to the ceiling fan and lights. If there is another switch to control the fan speed and the lights, please set the switch to the highest fan speed and turn on the lights.

Now, it is ready to control the ceiling fan and lights using the remote control unit.

1. Turn on fan: The remote control unit has three buttons LOW, MID, and HI. Pressing each of these three buttons will turn on the fan and set the fan to low speed, medium speed and high speed respectively. The fan indicator on the LCD display will be on, the fan speed indicator will show different height corresponding to the fan speed, and the fan speed display shows the current fan speed: 0 (off), 1 (low speed), 2 (medium speed), and 3 (high speed).

2. Turn off fan: Pressing the FAN/Off button will turn off the fan.



Pro
She
Flo

www.a-brt.com sales@a-brt.com

© 2023 All rights reserved. Subject to change without notices.

Fig. 5 AS-CF126L Remote Control Unit

- 3. Turn on or turn off light:** Pressing the LIGHT On/Off button will turn on or turn off the lights. When the light is on, the displayed light indicator is on.
- 4. Set up timer:** When the fan is on, pressing the TIMER button will select four timer hours 1 hour, 2 hours, 4 hours, and 8 hours respectively. Other customized timer hours can be made available at factory.

When the timer is activated, the timer indicator is on and the timer starts countdown. The fan will be turned off once the countdown timer runs out time.

Applications:

AS-CF126L ceiling fan remote control kit good is for all kind of ceiling fans, even for retrofitting an older ceiling fan. It can bring convenience and ease to our daily life and work.

They have wide applications at various locations such as homes, restaurants, conference rooms, theatres, etc.

How to Order:

Please contact us: Shenzhen Asia Bright Co., Ltd.
Floor 2nd~3rd, Building E, North Area No.2 of Shangxue
Science Park, Bantian, Shenzhen, China
Tel: +86-755-89748200 +86-755-89748211
Email: sales@a-brt.com Website: www.a-brt.com