

Fan Speed Control Switch with Remote Control

Model # : BRT-F007-T

(Please visit our website www.a-brt.com for more info)



Features:

BRT-F007-T is a speed control switch which has a built-in micro controller unit. In addition to a wall mount keypad unit, it also has a handheld remote control. The wall mount unit is designed for easy installation and retrofit, directly fit into standard wall box.

- Capacitance enabled speed control, extremely smooth and quiet;
- 3 step speed control using wall mount keypads or a remote control ;
- Memory function. The motor always starts at last speed;
- ABS-V0 flame resistance material; and
- Classical 86 series design and high quality build.

Front View and Back View:

Fig. 1 and Fig. 2 show the front view and the back view of BRT-F007-T fan speed control switch with remote control respectively.



Fig. 1 Front View



Fig. 2 Back View

As shown in Fig. 1 and Fig. 2, BRT-F007-T speed control switch set includes a wall mount unit and a remote control. The wall mount unit has 3 control keypads and 3 LED speed indicators on the front, and wiring terminal blocks on the back. The remote control has four control buttons and a wall mount bracket.

Specification Parameters:

Input Voltage	220~ 240V(50Hz/60Hz)	Operation Environment	No-condensation 20-90% RH, -20℃~40℃
Wattage	Motor: 100W	Load type	Motors
Mounting Hole Spacing	60mm	Matching Box	75mm x 75mm x 50mm
Wall Unit Dimension	86mm x 86mm x 43mm	Wall Unit Weight	50g
Remote Control Mode	IR	Remote Control Distance	Up to 7m
Remote Control Dimension	107mm x 36mm x 14mm	Remote Control Weight	117g

Wiring Diagram and Installation Guide:

BRT-F007-T speed control switch require both hot wire and neutral wire for installation:

Hot wire (ACL): Coming from the power line with 220V;

Neutral wire (ACN): Usually coming with the hot wire; and

FAN: Going to the fan.

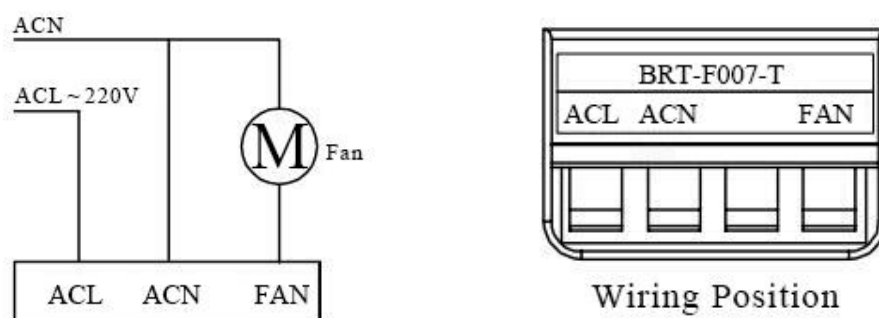


Fig. 3 BRT-F007-T Wiring Diagram

Warning: Please make sure power is turned off before starting installation!

Fig. 3 shows the wiring diagram and Fig. 4 shows the step-by-step installation instructions. There are three easy steps:

- Step one: Use a screwdriver to pry off the front plate in position A;
- Step two: Wiring according to the diagram and the labelled ports of the switch; and
- Step three: Install screws and front plate.

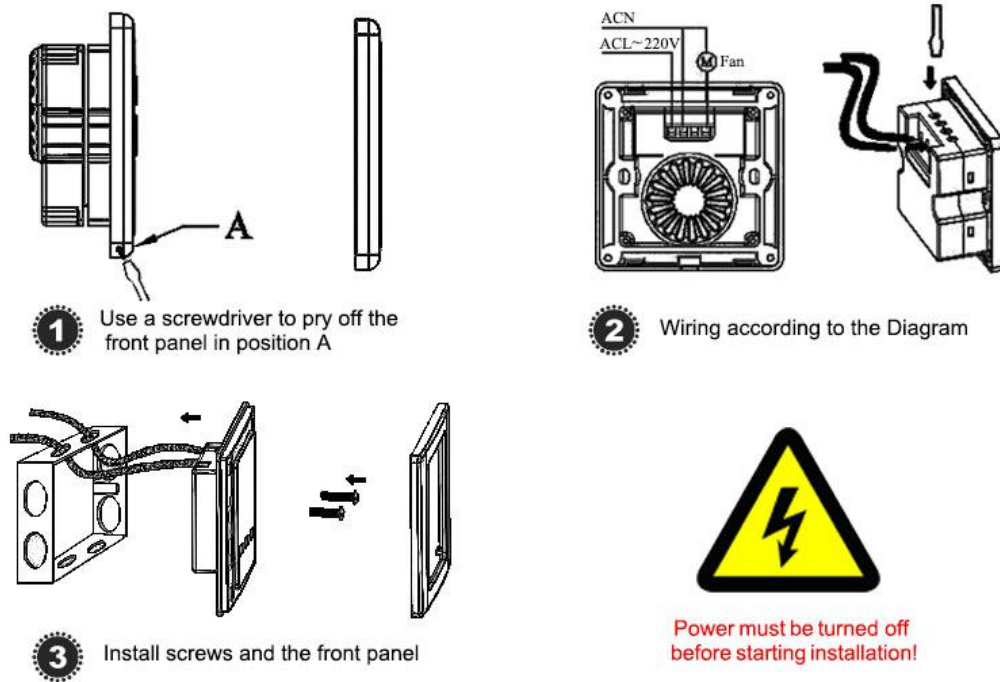
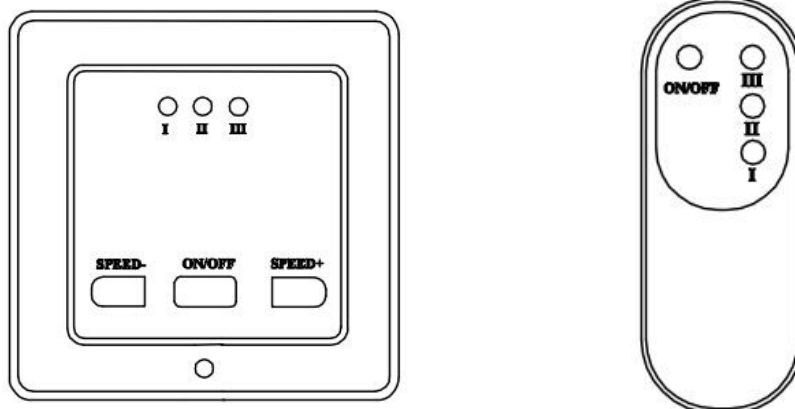


Fig. 4 BRT-F007-T Installation Guide

Operation Guide:

BRT-F007-T speed control switch can be controlled either using the keypads of the wall mount unit or the remote control as shown in Fig 5.



Product Description of BRT-F007-T

Shenzhen Asia Bright Co., Ltd.

Floor 2nd~3rd, Building E, North Area No.2 of Shangxue Science Park, Bantian, Shenzhen, China

www.a-brt.com sales@a-brt.com

© 2023 All rights reserved. Subject to change without notices.

Fig. 5 BRT-F007-T Speed Control

Control using wall mount unit: There are three keypads on the front panel. Pressing each keypad will turn on or turn off the fan or change the fan speed.

- ON/OFF: Pressing once will turn on the fan, and pressing again will turn off the fan;
- SPEED+: Each pressing will increase the fan speed; and
- SPEED-: Each pressing will decrease the fan speed.

There are 3 speed settings, I, II, and III. The fan will start at the highest speed III for the first time operation. Then, the memory function will enable the fan to always start at last speed.

Control using remote: There are four buttons on the remote. Pressing each button will turn on or turn off the fan.

- ON/OFF: Pressing once will turn on the fan, and pressing again will turn off the fan;
- +: Each pressing will increase the fan speed; and
- : Each pressing will decrease the fan speed.

Again, there are 3 speed settings, I, II, and III. The fan will start at the highest speed III for the first time operation. Then, the memory function will enable the fan to always start at last speed.

Applications:

BRT-F007-T speed control switch is good for all kinds of AC motors. It has wide applications at various locations such as homes, schools, laboratories, hospitals, bar, restaurant, etc, to control the speed of ventilation fans, pumps, or blowers. Because it uses capacitors for regulating the speed, it is especially suitable for a quiet environment.

How to Order:

Please contact us: Shenzhen Asia Bright Co., Ltd
Floor 2nd~3rd, Building E, North Area No.2 of Shangxue
Science Park, Bantian, Shenzhen, China
Tel: +86-755-89748200 +86-755-89748211
Email: sales@a-brt.com Website: www.a-brt.com