

Product Descriptions

Fan Speed Control Switch with Remote Control (No Neutral Required)

Model # : BRT-F005-T

(Please visit our website www.a-brt.com for more info)



Features:

BRT-F005-T is a speed control switch which has a built-in micro controller unit. In addition to a wall mount keypad unit, it also has a handheld remote control. The wall mount unit is designed for easy installation and retrofit, directly fit into standard wall box with no need for the neutral.

- Two load control outputs, one for fan and another one for lights;
- 5 step speed control using wall mount keypads or a remote control ;
- Memory function. The motor always starts at last speed;
- Adjustable minimum speed. The minimum speed can be fine-tuned by the user to suit for all kind of motors;
- ABS-V0 flame resistance material; and
- Classical 86 series design and high quality build.

Front View and Back View:

Fig. 1 and Fig. 2 show the front view and the back view of BRT-F005-T fan speed control switch with remote control respectively.



Fig. 1 Front View



Fig. 2 Back View

Product Description of BRT-F005-T

Shenzhen Asia Bright Co., Ltd.

Floor 2nd~3rd, Building E, North Area No.2 of Shangxue Science Park, Bantian, Shenzhen, China

www.a-brt.com. sales@a-brt.com.

© 2023 All rights reserved. Subject to change without notices.

As shown in Fig. 1 and Fig. 2, BRT-F005-T speed control switch set includes a wall mount unit and a remote control. The wall mount unit has 4 control keypads and 5 LED speed indicators on the front, and wiring terminal blocks on the back. The remote control has four control buttons and a wall mount bracket.

▶ Specification Parameters:

Input Voltage	220~ 240V(50Hz/60Hz)	Operation Environment	No-condensation 20-90% RH, -20℃~55℃
Wattage	Motor: 150W Lights: 300W	Load type	Motor, all types of lights
Mounting Hole Spacing	60mm	Matching Box	75mm x 75mm x 50mm
Wall Unit Dimension	86mm x 86mm x 43mm	Wall Unit Weight	95g
Remote Control Mode	IR	Remote Control Distance	Up to 7m
Remote Control Dimension	107mm x 36mm x 14mm	Remote Control Weight	52g

▶ Wiring Diagram and Installation Guide:

BRT-F005-T speed control switch requires three wires for installation:

- Hot wire (ACL): Coming from the power line with 220V;
- LAMP: Going to the lamp; and
- FAN: Going to the fan.

The fan and lamp are then connected to neutral wire.

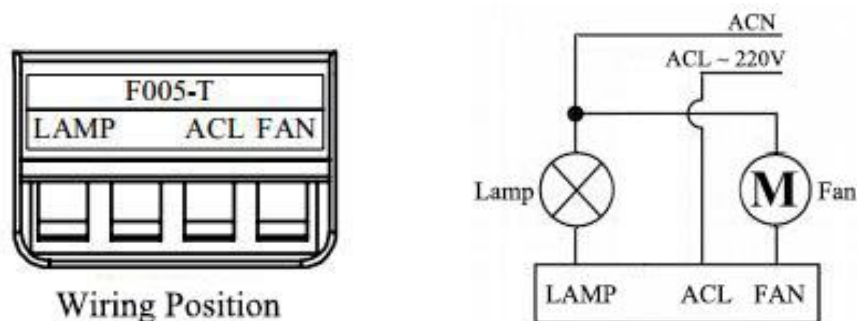


Fig. 3 BRT-F005-T Wiring Diagram

Warning: Please make sure power is turned off before starting installation!

Product Description of BRT-F005-T

Shenzhen Asia Bright Co., Ltd.

Floor 2nd~3rd, Building E, North Area No.2 of Shangxue Science Park, Bantian, Shenzhen, China

www.a-brt.com. sales@a-brt.com.

© 2023 All rights reserved. Subject to change without notices.

Fig. 3 shows the wiring diagram and Fig. 4 shows the step-by-step installation instructions. There are three easy steps:

- Step one: Use a screwdriver to pry off the front plate in position A;
- Step two: Wiring according to the diagram and the labelled ports of the switch; and
- Step three: Install screws and front plate.

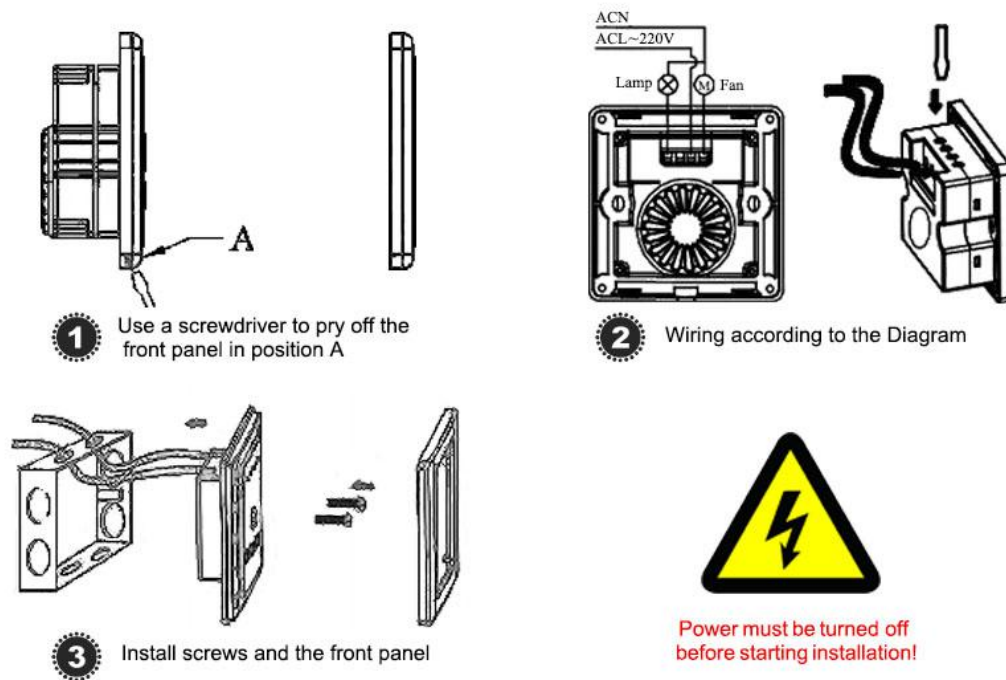


Fig. 4 BRT-F005-T Installation Guide

Operation Guide:

BRT-F005-T speed control switch can be controlled either using the keypads of the wall mount unit or the remote control as shown in Fig 5.

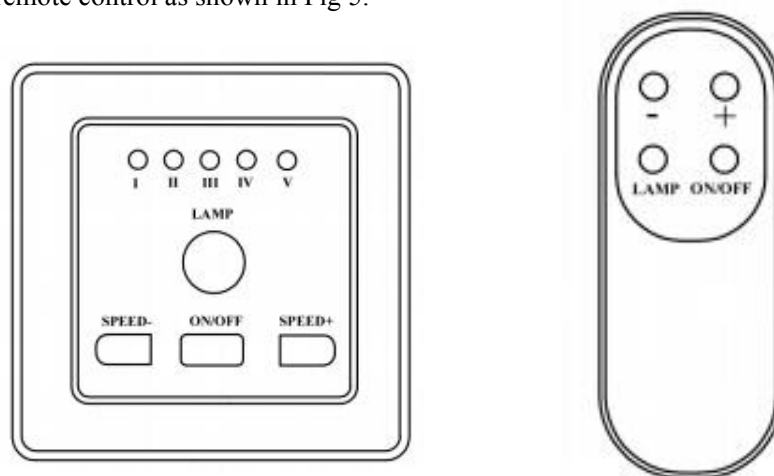


Fig. 5 BRT-F005-T Speed Control

Control using wall mount unit: There are four keypads on the front panel. Pressing each keypad will turn on or turn off the fan or the lamp and change the fan speed.

- LAMP: Pressing once will turn on the lamp, and pressing again will turn off the lamp;
- ON/OFF: Pressing once will turn on the fan, and pressing again will turn off the fan;
- SPEED+: Each pressing will increase the fan speed; and
- SPEED-: Each pressing will decrease the fan speed.

There are 5 speed settings, I, II, III, IV, and V. The fan will start at the highest speed V for the first time operation. Then, the memory function will enable the fan to always start at last speed.

Control using remote: There are four buttons on the remote. Pressing each button will turn on or turn off the fan, turn on or turn off the lamp, and change the fan speed.

- LAMP: Pressing once will turn on the lamp, and pressing again will turn off the lamp;
- ON/OFF: Pressing once will turn on the fan, and pressing again will turn off the fan;
- +: Each pressing will increase the fan speed; and
- : Each pressing will decrease the fan speed.

Again, there are 5 speed settings, I, II, III, IV, and V. The fan will start at the highest speed V for the first time operation. Then, the memory function will enable the fan to always start at last speed.

Adjust the minimum speed: There is a potentiometer for minimum speed adjustment on the side of BRT-F005-T as shown in Fig. 6. Turn on the fan and run the fan at minimum speed. Then, use a screw driver to adjust this potentiometer to obtain a minimum fan speed as desired.

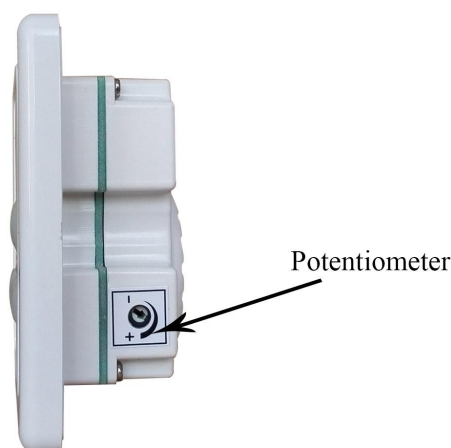


Fig. 6 Adjust the minimum speed

Note: Adjusting the minimum speed is necessary for some motors, or the motor may not move due to too low a driving voltage.

Applications:

BRT-F005-T speed control switch is ideal for regulating the speed of all kinds of AC motors. It has wide applications at various locations such as homes, schools, laboratories, hospitals, bar, restaurant, etc, to control the speed of ventilation fans, pumps, or blowers.

How to Order:

Please contact us: Shenzhen Asia Bright Co., Ltd
Floor 2nd~3rd, Building E, North Area No.2 of Shangxue
Science Park, Bantian, Shenzhen, China
Tel: +86-755-89748200 +86-755-89748211
Email: sales@a-brt.com Website: www.a-brt.com