

Product Descriptions

Rotary Speed Control Switch (No Neutral Required)

Model #: BRT-F009

(Please visit our website www.a-brt.com for more info)



Features:

BRT-F009 is a fan regulator control switch. It uses a rotary knob for turning on or turning off the motor, and for adjusting the fan speed. It has elegant appearance, durable material and easy operation. It is widely used in families, offices and workshops and so on.

- Operates on a 2 wire system, and fits in a standard wall box;
- Good for AC motors;
- Adjustable fan speed function;
- Wallplate uses flame resistance ABS-V0 material for safety;
- Classical 86 series design and easy installation.

Front View and Back View:

Fig. 1 and Fig. 2 show the front view and the back view of BRT-F009 speed control switch respectively.



Fig. 1 Front View



Fig. 2 Back View

Product Description of BRT-F009

Shenzhen Asia Bright Co., Ltd.

Floor 2nd~3rd, Building E, North Area No.2 of Shangxue Science Park, Bantian, Shenzhen, China

www.a-brt.com. sales@a-brt.com.

© 2023 All rights reserved. Subject to change without notices.

As shown in Fig. 1 and Fig. 2, BRT-F009 speed control switch has a Rotary knob on the front, and wiring terminal blocks on the back.

Specification Parameters:

Input Voltage	220~240V(50Hz/60Hz)	Operation Environment	No-condensation 20-90% RH, -20℃~55℃
Wattage	150W	Load type	Motor
Mounting Hole Spacing	60mm	Matching Box	75mm x 75mm x 50mm
Dimension	86mm x 86mm x 43mm	Weight	84g

Wiring Diagram and Installation Guide:

BRT-F009 speed control switch only require two wires for installation:

Hot wire (ACL): Coming from the power line with 220V; and

Load wire: Going to the load.

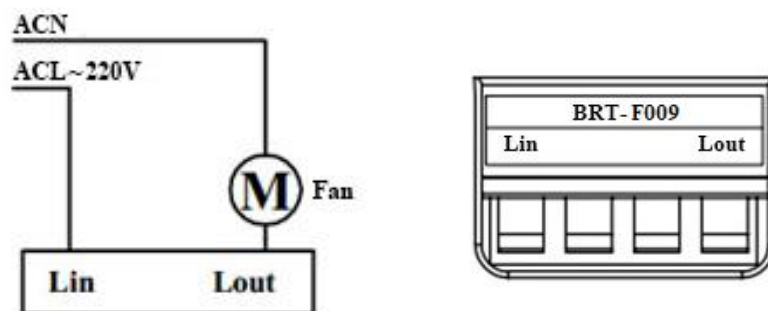


Fig. 3 BRT-F009 Wiring Diagram

Warning: *Please make sure power is turned off before starting installation!*

Fig. 3 shows the wiring diagram and Fig. 4 shows the step-by-step installation instructions. There are three easy steps:

- Step one: Use a screwdriver to pry off the front plate in position A;
- Step two: Wiring according to the diagram and the labelled ports of the switch; and
- Step three: Install screws and front plate.

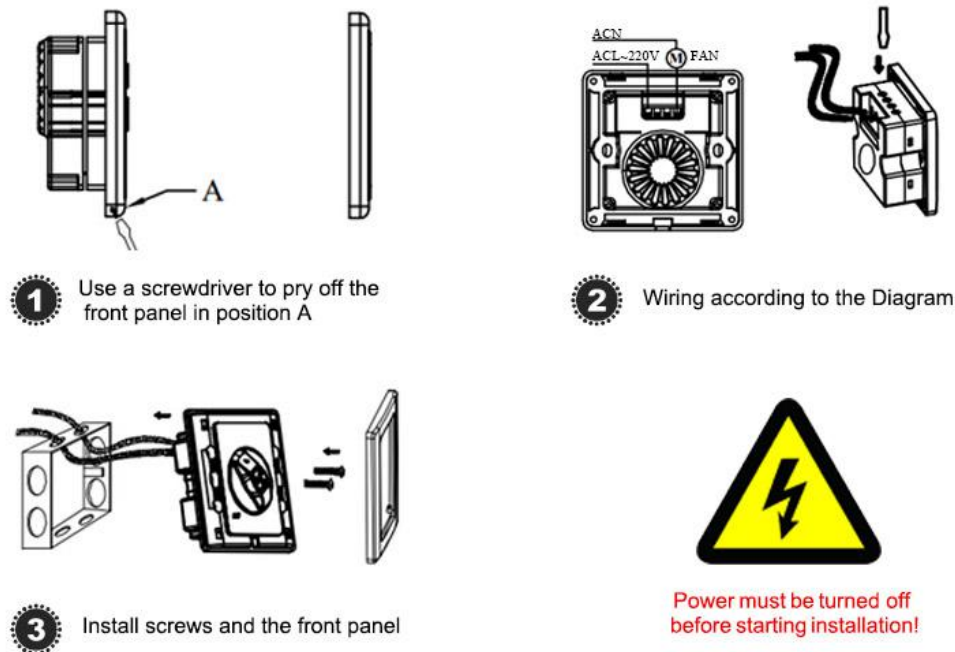


Fig. 4 BRT-F009 Installation Guide

Operation Guide:

BRT-F009 speed control switch delivers stepless smooth control, and the speed is adjusted by using the rotary knob on the front.

Turn on or turn off: Rotating the knob clockwise away from the “OFF” position will turn on the motor at its last speed and the fan is always turned on at the highest speed. Rotating the knob counter-clockwise to the “OFF” position will turn off the motor.

Adjust the speed: Rotating the knob clockwise will decrease the speed, and rotating the knob counter-clockwise will increase the speed.

Applications:

BRT-F009 speed control switch is ideal for regulating all kinds of motors, especially for high power motor loads. It has wide applications at various locations such as homes, schools,

laboratories, hospitals, bar, restaurant, etc, to control the speed of ventilation fans, pumps, or blowers.

How to Order:

Please contact us: Shenzhen Asia Bright Co., Ltd.
Floor 2nd~3rd, Building E, North Area No.2 of Shangxue
Science Park, Bantian, Shenzhen, China
Tel: +86-755-89748200 +86-755-89748211
Email: sales@a-brt.com Website: www.a-brt.com