

## Product Descriptions

### Timer Switch with Sound Sensor

**Model #:** BRT-805

(Please visit our website [www.a-brt.com](http://www.a-brt.com) for more info)



#### **Features:**

BRT-805 is a timer switch integrated with a sound sensor. It automatically turns on the load when the sound level is above a preset threshold and keeps the load on until a delay-off time runs out. It is designed for easy installation and retrofit, directly fit into standard wall box with no need for the neutral.

- Loads up to 40W, 12V DC;
- Adjustable delay-off time from 10 seconds to 15 minutes;
- Ambient light override. Automatically measures the ambient light level, and there is no sound trigger on when brightness is above a threshold which is adjustable by end users;
- ABS-V0 flame resistance material; and
- Classical 86 series design and high quality build.

#### **Front View and Back View:**

Fig. 1 and Fig. 2 show the front view and the back view of BRT-805 timer switch respectively.



**Fig. 1** Front View



**Fig. 2** Back View

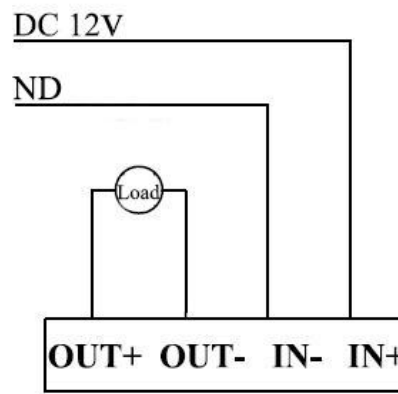
The switch has a sound detector and a light detector on the front, tuning screws for setting up delay-off time and ambient light override on two sides, and terminal blocks for wiring on the back.

#### **Specification Parameters:**

Input Voltage	DC12V	Operation Environment	No-condensation 20-90% RH, 0℃～55℃
Wattage	40W Max.	Load type	12V DC
Standby Power	0.05W	Sound Trigger Level	60 to 70 dB
Mounting Hole Spacing	60mm	Matching Box	75mm x 75mm x 50mm
Dimension	86mm x 86mm x 30mm	Weight	66g

#### **Wiring Diagram and Installation Guide:**

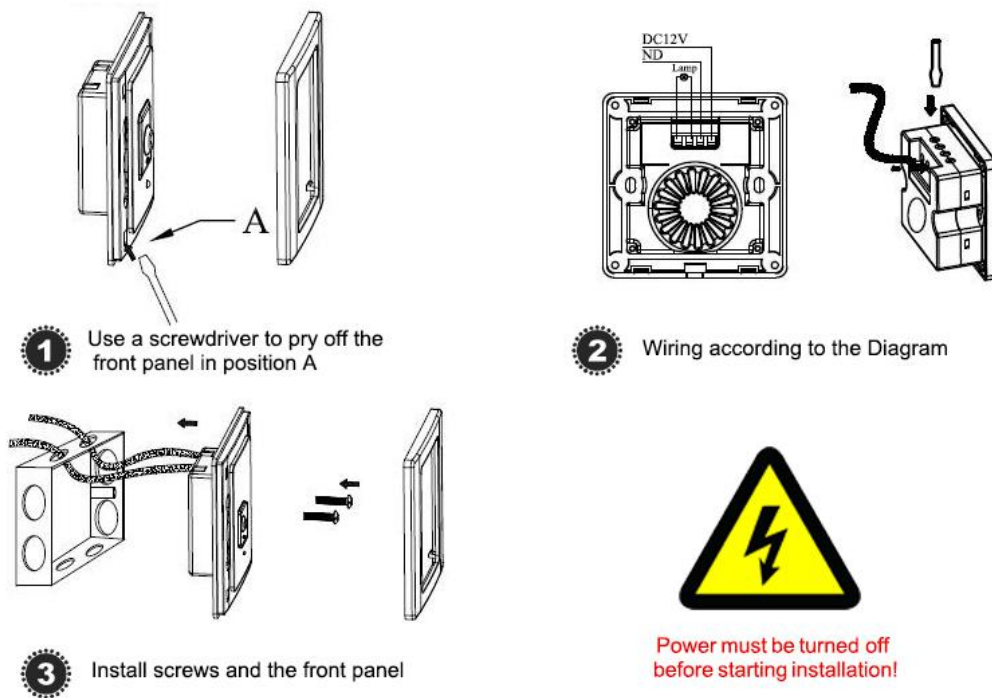
BRT-805 timer switch can only be connected to 12V DC power supply, and the load needs to be 12V DC as well. Fig. 3 shows the wiring diagram.



**Fig. 3** BRT-805 Wiring Diagram

Fig. 4 shows the step-by-step installation instructions. There are three easy steps:

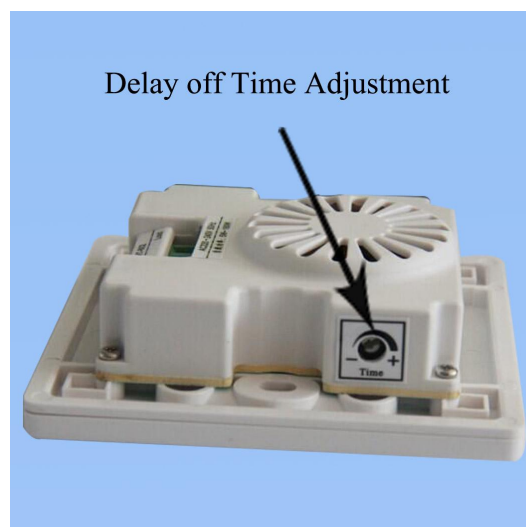
- Step one: Use a screwdriver to pry off the front plate in position A;
- Step two: Wiring according to the diagram and the labelled ports of the switch; and
- Step three: Install screws and front plate.



**Fig. 4** BRT-805 Installation Guide

#### **BRT-805 Operation Guide:**

Once properly wired, BRT-805 timer switch needs two adjustments for the first time operation: set up the delay-off time and set up the ambient light override.



**Fig. 5** Set up Delay-off Time



**Fig. 6** Set up Ambient Light Override

There are two tuning screws on the sides of BRT-805 timer switch. Please note that the tuning range for these two screws is about 120 degrees. Do not use strong force to turn them.

#### **1. Adjust the delay-off time**

There is a tuning screw on one side of BRT-805 timer switch. Use a crew driver to tune this screw to adjust the delay-off time, as shown in Fig. 5. The delay-off time can be set from 10 seconds to 15 minutes.

#### **2. Adjust the ambient light brightness threshold**

There is a tuning screw on another side of the switch. Use a crew driver to tune this screw to adjust the ambient light override threshold brightness, as shown in Fig. 6.

Please note that BRT-805 timer switch needs 2 minute warm-up time before it can work normally. And, it is recommended that the switch not be used in noisy environment.

#### **Applications:**

BRT-805 timer switch can be used for automatically turning on and turning off various loads on sound triggers. It is perfect for saving energy and bringing convenience and safety to our daily life

*Product Description of BRT-805*

Shenzhen Asia Bright Co., Ltd.

Floor 2<sup>nd</sup>~3<sup>rd</sup>, Building E, North Area No.2 of Shangxue Science Park, Bantian, Shenzhen, China

[www.a-brt.com](http://www.a-brt.com). [sales@a-brt.com](mailto:sales@a-brt.com).

© 2022 All rights reserved. Subject to change without notices.

and work. It has wide applications at various locations such as balcony, stairwell, washroom, and other public places.

### **How to Order:**

Please contact us:      Shenzhen Asia Bright Co., Ltd.  
Floor 2<sup>nd</sup>~3<sup>rd</sup>, Building E, North Area No.2 of Shangxue  
Science Park, Bantian, Shenzhen, China  
Tel:    +86-755-89748200    +86-755-89748211  
Email: [sales@a-brt.com](mailto:sales@a-brt.com)    Website: [www.a-brt.com](http://www.a-brt.com)