

Product Descriptions

Timer Switch with Sound Sensor (No Neutral Required)

Model #: BRT-802

(Please visit our website www.a-brt.com for more info)



Features:

BRT-802 is a timer switch integrated with a sound sensor. It automatically turns on the load when the sound level is above a preset threshold and keeps the load on until a delay-off time runs out. It is designed for easy installation and retrofit, directly fit into standard wall box with no need for the neutral.

- Loads up to 150W;
- Adjustable delay-off time from 10 seconds to 15 minutes;
- Ambient light override. Automatically measures the ambient light level, and there is no sound trigger on when brightness is above a threshold which is adjustable by end users;
- Good for all kinds of loads (an additional adapter required for capacitive lights such as CFL);
- ABS-V0 flame resistance material; and
- Classical 86 series design and high quality build.

Front View and Back View:

Fig. 1 and Fig. 2 show the front view and the back view of BRT-802 timer switch respectively.



Fig. 1 Front View**Fig. 2** Back View

The switch has a sound detector and a light detector on the front, tuning screws for setting up delay-off time and ambient light override on two sides, and terminal blocks for wiring on the back.

Specification Parameters:

| | | | |
|-----------------------|--|-----------------------|-------------------------------------|
| Input Voltage | 220~240V(50Hz/60Hz) | Operation Environment | No-condensation 20-90% RH, -20℃~40℃ |
| Wattage | Resistive: 150W Capacitive: 5W to 50W Inductive: 5W to 50W | Load type | All Types* |
| Standby Power | 0.5W | Sound Trigger Level | 60 to 70 dB |
| Mounting Hole Spacing | 60mm | Matching Box | 75mm x 75mm x 50mm |
| Dimension | 86mm x 86mm x 30mm | Weight | 66g |

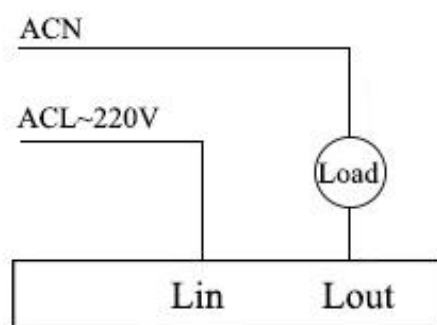
* For capacitive loads, an adaptor is needed. Please talk to our sales representatives.

Wiring Diagram and Installation Guide:

BRT-802 timer switch only requires two wires for installation:

Hot wire (ACL): Coming from the power line with 220V; and

Load wire: Going to the load.

**Fig. 3** BRT-802 Wiring Diagram

Warning: Please make sure power is turned off before starting installation!

Product Description of BRT-802

Shenzhen Asia Bright Co., Ltd.

Floor 2nd~3rd, Building E, North Area No.2 of Shangxue Science Park, Bantian, Shenzhen, China

www.a-brt.com. sales@a-brt.com.

© 2022 All rights reserved. Subject to change without notices.

Fig. 3 shows the wiring diagram and Fig. 4 shows the step-by-step installation instructions. There are three easy steps:

- Step one: Use a screwdriver to pry off the front plate in position A;
- Step two: Wiring according to the diagram and the labelled ports of the switch; and
- Step three: Install screws and front plate.

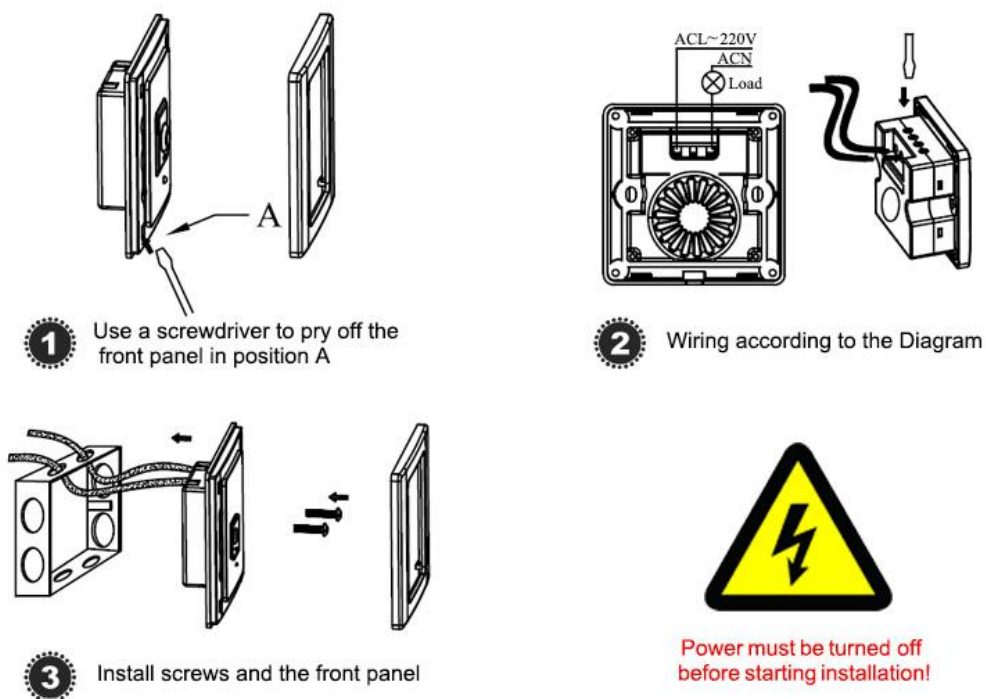


Fig. 4 BRT-802 Installation Guide

BRT-802 Operation Guide:

Once properly wired, BRT-802 timer switch needs two adjustments for the first time operation: set up the delay-off time and set up the ambient light override.

1. Adjust the delay-off time

There is a tuning screw on one side of BRT-802 timer switch. Use a crew driver to tune this screw

Product Description of BRT-802

Shenzhen Asia Bright Co., Ltd.

Floor 2nd~3rd, Building E, North Area No.2 of Shangxue Science Park, Bantian, Shenzhen, China

www.a-brt.com. sales@a-brt.com.

© 2022 All rights reserved. Subject to change without notices.

to adjust the delay-off time, as shown in Fig. 5. The delay-off time can be set from 10s to 15 minutes.



Fig. 5 Set up Delay-off Time

2. Adjust the ambient light brightness threshold

There is a tuning screw on another side of the switch. Use a crew driver to tune this screw to adjust the ambient light override threshold brightness, as shown in Fig. 6.



Product Description

Shenzhen Asia Bright Co., Ltd.

Floor 2nd~3rd, Building E, North Area No.2 of Shangxue Science Park, Bantian, Shenzhen, China

www.a-brt.com. sales@a-brt.com.

© 2022 All rights reserved. Subject to change without notices.

Fig. 6 Set up Ambient Light Override

Please note that BRT-802 timer switch needs 2 minute warm-up time before it can work normally. And, it is recommended that the switch not be used in noisy environment.

Applications:

BRT-802 timer switch can be used for automatically turning on and turning off various loads on sound triggers. It is perfect for saving energy and bringing convenience and safety to our daily life and work. It has wide applications at various locations such as balcony, stairwell, washroom, and other public places.

How to Order:

Please contact us: Shenzhen Asia Bright Co., Ltd.
Floor 2nd~3rd, Building E, North Area No.2 of Shangxue
Science Park, Bantian, Shenzhen, China
Tel: +86-755-89748200 +86-755-89748211
Email: sales@a-brt.com Website: www.a-brt.com