

## Product Descriptions

### Sound Sensor Switch (Neutral Required)

**Model #:** BRT-801

(Please visit our website [www.a-brt.com](http://www.a-brt.com) for more info)



#### **Features:**

BRT-801 is a timer switch integrated with a sound sensor. It automatically turns on the load when the sound level is above a preset threshold and keeps the load on until a delay-off time runs out. It is designed for easy installation and retrofit, directly fit into standard wall box where both the “hot” wire and the neutral wire are present.

- High power. Loads up to 2000W;
- Adjustable delay-off time from 2 minutes to 60 minutes;
- Ambient light override. Automatically measures the ambient light level, and there is no sound trigger on when brightness is above a threshold which is adjustable by end users;
- Good for all kinds of loads (an additional adapter required for capacitive lights such as CFL);
- ABS-V0 flame resistance material; and
- Classical 86 series design and high quality build.

#### **Front View and Back View:**

Fig. 1 and Fig. 2 show the front view and the back view of BRT-801 timer switch respectively.



**Fig. 1** Front View



**Fig. 2** Back View

The switch has a sound detector and a light detector on the front and dip switches for setting up delay-off time and terminal blocks for wiring on the back.

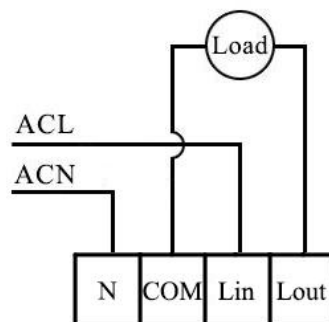
### Specification Parameters:

Input Voltage	220~240V(50Hz/60Hz)	Operation Environment	No-condensation 20-90% RH, -20℃~40℃
Wattage	Resistive: 2000W Inductive: 1000W Capacitive: 1000W	Load type	All Types
Mounting Hole Spacing	60mm	Matching Box	75mm x 75mm x 50mm
Dimension	86mm x 86mm x 38mm	Weight	110g

### Wiring Diagram and Installation Guide:

BRT-801 timer switch require both hot wire and neutral wire for installation:

- Hot wire (ACL): Coming from the power line with 220V;
- Neutral wire (ACN): Usually coming with the hot wire; and
- Load wire: Going to the load.



**Fig. 3** BRT-801 Wiring Diagram

**Warning:** Please make sure power is turned off before starting installation!

Fig. 3 shows the wiring diagram and Fig. 4 shows the step-by-step installation instructions. There are three easy steps:

- Step one: Use a screwdriver to pry off the front plate in position A;

Step two: Wiring according to the diagram and the labelled ports of the switch; and

Step three: Install screws and front plate

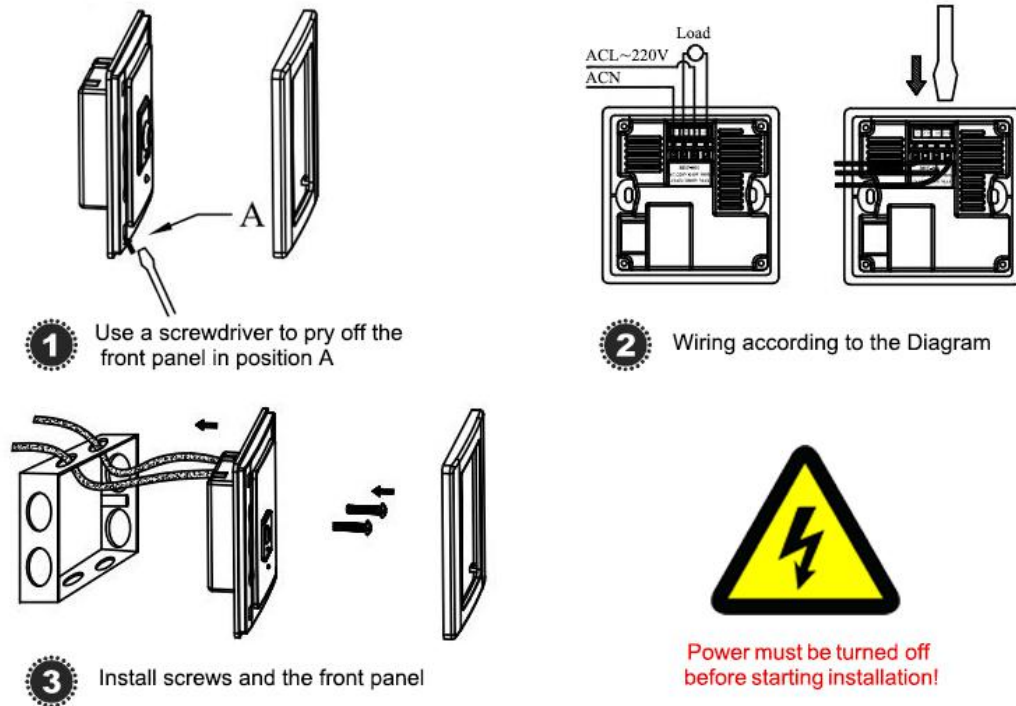


Fig. 4 BRT-801 Installation Guide

### BRT-801 Operation Guide:

Once properly wired, BRT-801 timer switch needs two adjustments for the first time operation: set up the delay-off time and set up the ambient light override.

#### 1. Adjust the delay-off time

There are 4 dip switches on the back of the switch. These 4 dip switches are used to set the delay off time to 8 settings based on different combinations. Fig. 5 shows all the dip switches are in “off” positions. Each combination corresponds to a delay-off time setting.

0000	delay off time = 2 minutes
1000	delay off time = 5 minutes
0100	delay off time = 10 minutes
1100	delay off time = 20 minutes
0010	delay off time = 30 minutes
1010	delay off time = 40 minutes
0110	delay off time = 50 minutes
1110	delay off time = 60 minutes

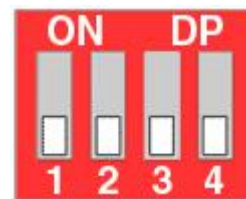


Fig. 5 Dip Switches in 0000 Positions

0 = off and 1 = on

(Other factory settings are available. Please talk to our sales representatives).

## 2. Adjust the ambient light brightness threshold

There is a tuning screw on the side of the switch. Use a crew driver to tune this screw to adjust the ambient light override threshold brightness, as shown in Fig. 6. The screw can only be tuned for less than 180 degrees. Please do not use excessive force to tune the screw.



**Fig. 6** Set up Ambient Light Override

Please note that BRT-801 timer switch needs 2 minute warm-up time before it can work normally. And, it is recommended that the switch not be used in noisy environment.

### **Applications:**

BRT-801 timer switch can be used for automatically turning on and turning off various loads on sound triggers. Its high power capability makes it especially suitable for driving multiple loads simultaneously.

BRT-801 timer switch is perfect for saving energy and bringing convenience and safety to our daily life and work. It has wide applications at various locations such as balcony, stairwell, washroom, and other public places.

### **How to Order:**

Please contact us:     Shenzhen Asia Bright Co., Ltd.  
Floor 2<sup>nd</sup>~3<sup>rd</sup>, Building E, North Area No.2 of Shangxue  
Science Park, Bantian, Shenzhen, China

*Product Description of BRT-801*

Shenzhen Asia Bright Co., Ltd.

Floor 2<sup>nd</sup>~3<sup>rd</sup>, Building E, North Area No.2 of Shangxue Science Park, Bantian, Shenzhen, China

[www.a-brt.com](http://www.a-brt.com). [sales@a-brt.com](mailto:sales@a-brt.com).

© 2022 All rights reserved. Subject to change without notices.

Tel: +86-755-89748200 +86-755-89748211  
Email: [sales@a-brt.com](mailto:sales@a-brt.com) Website: [www.a-brt.com](http://www.a-brt.com)