

Product Descriptions

Adjustable Ceiling Mount Sound Control Switch

Model #: BRT-881

(Please visit our website: www.a-brt.com for more info)



Features:

BRT-881 is a ceiling mount sound control switch, it automatically turns on the load when the sound level is above a preset threshold and keeps the load on until a preset delay off time runs out. It has wide threshold of sensitivity, powerful motor and adjustable ambient light and timer. It can be widely used in many occasions, and the best choice for home, hotel, and other building project.

- Automatically sound detection. When the sound level is above preset dB data, the load is triggered on;
- Delay off time can be set as 2mins, 5mins, 10mins, 20mins, 30mins, 40mins, 50mins, or 60mins ;(customer settings available.)
- Ambient light override. Automatically measures the ambient light level, and there is no sound trigger when it is above the preset data ;
- Good for all kinds of loads (Resistive, Inductive, Capacitive), it can be widely used in corridor, warehouse, park and some other public place.
- ABS-V0 flame resistance material; and
- Easy installation onto the ceiling with or without a holder;

Front View and Back View:

Fig. 1 and Fig. 2 show the front view and the back view of the BRT-881 ceiling mount sound control switch respectively.

Product Description of BRT-881

Shenzhen Asia Bright Co., Ltd.

Floor 2nd~3rd, Building E, North Area No.2 of Shangxue Science Park, Bantian, Shenzhen, China

www.a-brt.com. sales@a-brt.com.

© 2022 All rights reserved. Subject to change without notices.



Fig.1 Front View



Fig.2 Back View

Specification Parameters:

Input Voltage	220~240V/50or 60Hz	Working Temperature	0℃~55℃
Wattage	2000W(Max)	Relative Humidity	Non-condensing 20-90%
Mounting Hole Diameter	68 mm	Working Temperature	60-75dB
Switch Dimension	Ellipsoid Cover: MAX 105mm	Weight	115g
	Round Cover Diameter : 77mm	Connection Mode	AC L and N

Operation Guide and Cautions

- Please make sure power is turned off before starting installation. Shorting and overload are prohibited.
- The tuning screw can not make a full turn. To avoid possible damage to the screw, please do not use strong force to tune it.
- Adjust the ambient light override threshold: Counter-clockwise to “+”: increase the threshold, so that the triggers will be overridden in bright lighting condition; and Clockwise to “-”: decrease the threshold, so that the triggers will not be overridden in dark lighting condition.
- Adjust the delay off time: As it shown in Fig.5, different dial-up combination corresponding to different delay off time.

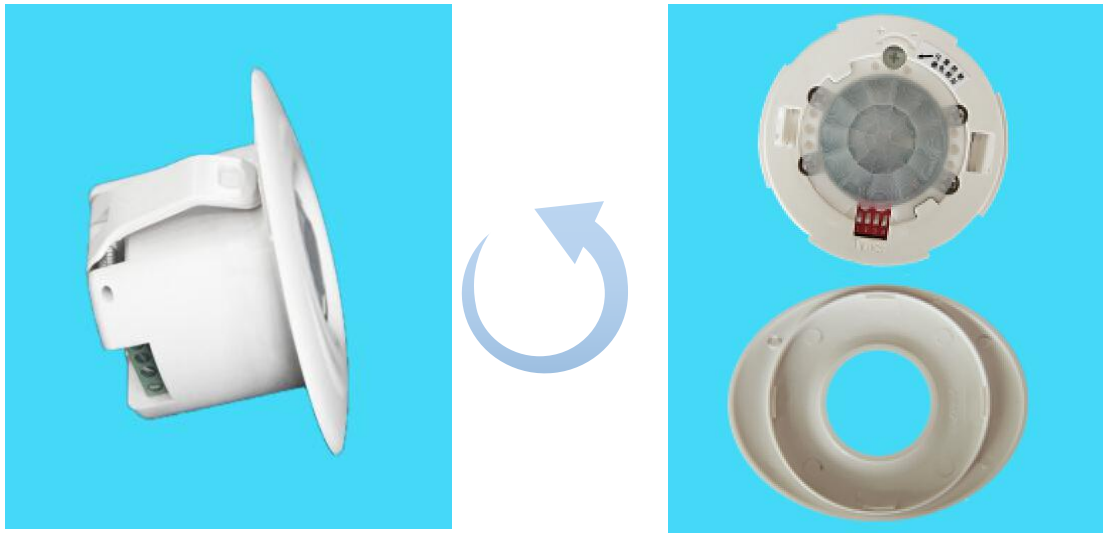


Fig.3 Counter-clockwise turn to open the front cover.



Fig.4 Delay off time and ambient light override adjustment

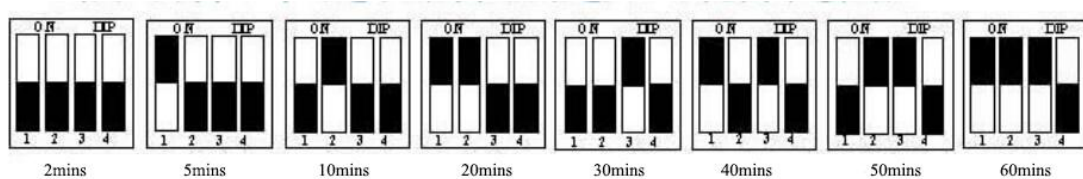


Fig.5 Delay off time and Dial-up Position Diagram

▶ Wiring Diagram:

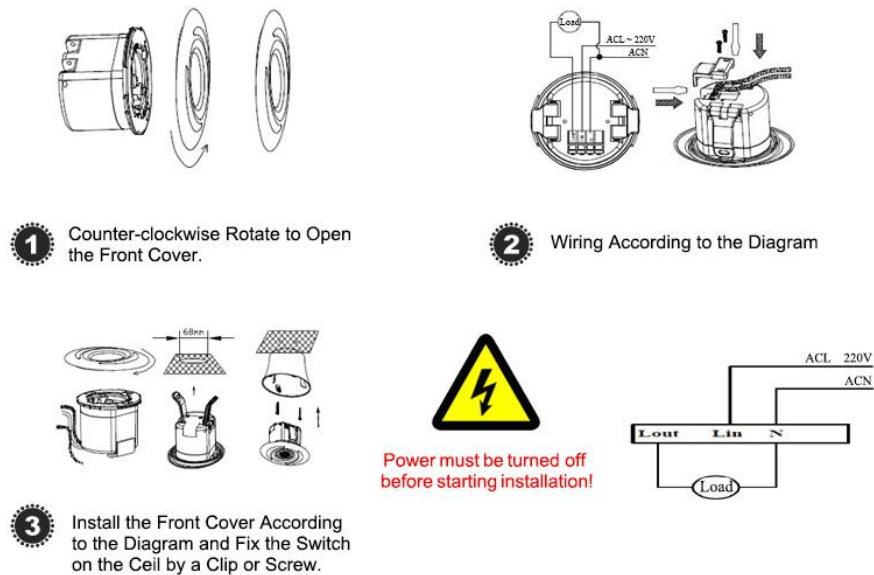


Fig.6 Wiring Diagram

▶ Installation Guide:

There are two ways to install BRT-881 ceiling mount sound control switch. Fig. 5 and Fig. 6 show the step-by-step installation instructions, respectively.

Warnings:

1. Please make sure power is turned off before starting installation!
2. Load shorting or using a load with a power rating higher than the specified wattage of the sensor switch is prohibited.

1. Installation using a holder

As shown in Fig. 7, a holder is attached to the ceiling using screws first. Then, the sound control switch can be easily snapped into the holder.

The holder is specially designed for BRT-881 sound control switch. Please talk to our sales representative when placing orders.



Fig. 7 Installation with a Holder

2. Installation without a holder

As shown in Fig.8, without a holder, an opening in the ceiling needs to be made first. There are four steps:

- Step one: Open a hole of 68mm in diameter in the ceiling;
(Attach the electrical wires as shown in the Wiring Diagram Fig. 6).
- Step two: Open the two flexible clamps on the side surface of the sensor switch;
- Step three: Insert the sensor switch into the hole; and
- Step four: The clamps will hold the sensor switch onto the ceiling tight and steady.



Fig. 8 Installation without a Holder

Applications:

BRT-881 ceiling mount sound control switch can be used for automatically turning on and/or turning off various loads such as lights, fans, appliances, or other kinds of electrical equipment. They are perfect for saving energy and bringing convenience and safety to our daily life and work. They have wide applications at various locations such as stairwells, corridors, washrooms, offices, conference rooms in homes, schools, laboratories, hospitals, offices, etc.

How to Order:

Please contact us: Shenzhen Asia Bright Co., Ltd.
 Floor 2nd~3rd, Building E, North Area No.2 of Shangxue
 Science Park, Bantian, Shenzhen, China
 Tel: +86-755-89748200 +86-755-89748211
 Email: sales@a-brt.com Website: www.a-brt.com