

Product Descriptions

Keypad Speed Control Switch with Socket

Model #: BRT-783

(Please visit our website www.a-brt.com for more info)



Features:

BRT-783 is a speed control switch which has a built-in micro controller unit. It uses one keypad for turning on or turning off the motor, and for adjusting the motor's speed. It has an extension power cord and a socket for easy installation.

- Can be used as a portable device or a wall mount unit;
- Load up to 600W and overheat protection;
- 5 speed settings;
- Memory function. The motor always starts at last speed;
- Minimum speed setting. The minimum speed can be fine-tuned by the user to suit for all kind of motors;
- LED lights showing fan speed
- ABS-V0 flame resistance material; and
- High quality builds.

Front View and Back View:

Fig. 1 and Fig. 2 show the front view and the back view of the BRT-783 speed control switch respectively. It has a keypad control unit on the right and a standard socket on the left. It comes with a power cord on the back.



Product Description of BRT783

Shenzhen Asia Bright Co., Ltd.

Floor 2nd~3rd, Building E, North Area No.2 of Shangxue Science Park, Bantian, Shenzhen, China

www.a-brt.com. sales@a-brt.com.

© 2022 All rights reserved. Subject to change without notices.

Fig. 1 Front View

Fig. 2 Back View

 **Applications:**

BRT-783 keypad speed control switch can be used for all kinds of appliances driven by motors, especially for high power loads such as cooling fans, ventilation fans, blowers, etc. It has wide applications at various locations such as homes, schools, laboratories, hospitals, bars, restaurants, etc.

 **Specification Parameters:**

Input Voltage	220~240V(50Hz/60Hz)	Operation Environment	No-condensation 20-90% RH, -20℃~55℃
Load type	Motor	Wattage	600W
Dimension	176mm x 88mm x 43mm	Weight	470g

 **Wiring and Installation Guide:**

When BRT-783 keypad speed control switch is used as a portable device, there is no need for further wiring installation. Once the power cord of BRT-783 is plugged to a wall socket or extension board, it is ready to go.

When BRT-783 keypad speed control switch is used as a wall mount unit, the power cord can be removed and the unit is directly wired to power lines. Please find Wiring and Installation instructions as follows.

There are 5 wiring and installation steps (please refer to Fig. 3):

- Step one: Open the switch cover, and use a screwdriver to pry off the front plates on lower edges;
- Step two: Take off the screws to remove the bottom plate;
- Step three: Take off the screws pointed by the red arrows to remove the cable clamp and the power cord that comes with the unit;
- Step four: Insert the wires into the terminal blocks and tighten the terminal block screws; and

Step five: Reverse step 3, 2, and 1 to reinstall the cable clamp, the bottom plate, and front plates. Finally, close the cover.

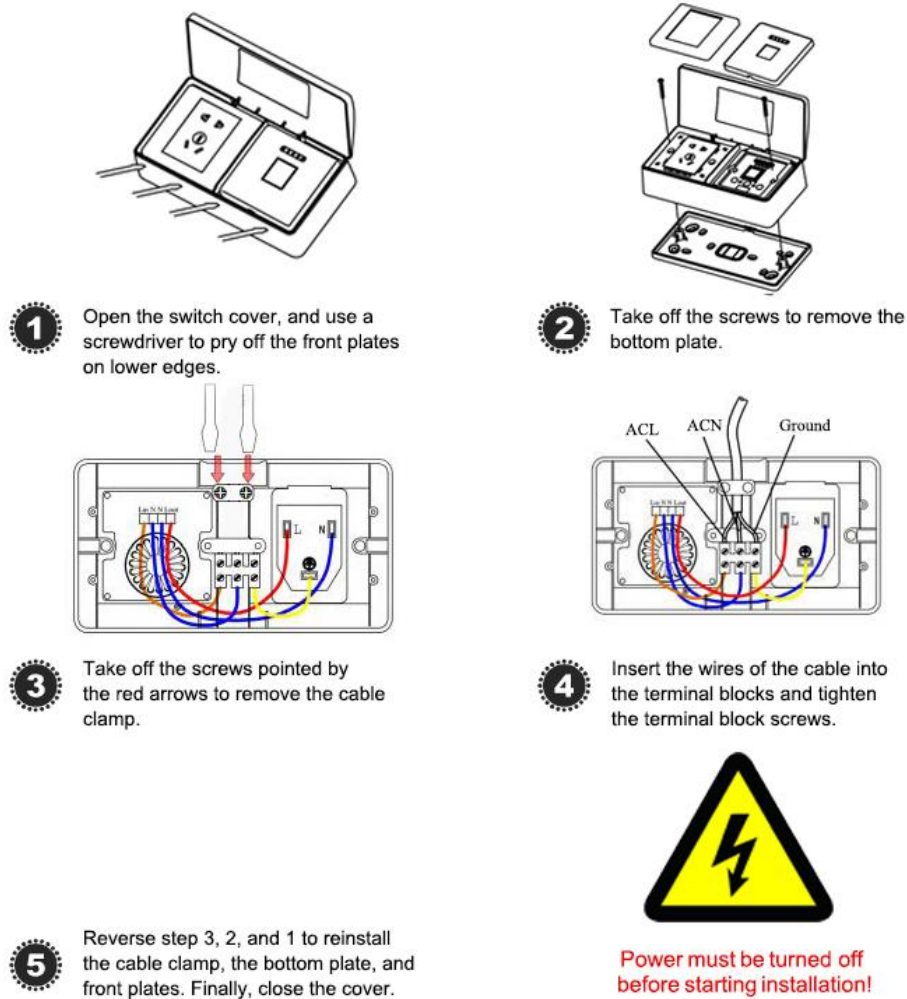


Fig. 3 BRT-783 Installation Guide

Operation Guide:

BRT-783 keypad control switch is easy to operate. Once it is installed, plug the fan's power cord to the socket of BRT-783.

Product Description of BRT783

Shenzhen Asia Bright Co., Ltd.

Floor 2nd~3rd, Building E, North Area No.2 of Shangxue Science Park, Bantian, Shenzhen, China

www.a-brt.com sales@a-brt.com

© 2022 All rights reserved. Subject to change without notices.

Turn on or turn off: As shown in Fig.4a, pressing the keypad will turn on the motor at its last speed (the first time turn-on will be at the highest speed), and pressing again will turn off the motor.

Adjust the speed: Pressing and holding down the keypad will cycle the motor speed in 5 different settings, from the highest to the lowest, then back to the highest. Once the desired speed is reached, release the keypad.

Note: The number of the lit LED lights indicates the speed of the motor. The more the lit LED lights, the faster the speed.

Adjust the minimum speed: As shown in Fig.4b, the minimum fan speed can be fine-tuned by using a dial on the side of BRT-783 during initial installation. Turn on the fan and pressing the keypad to run the fan at the lowest speed. Then, rotate the fine-tune dial to obtain a minimum fan speed as desired.

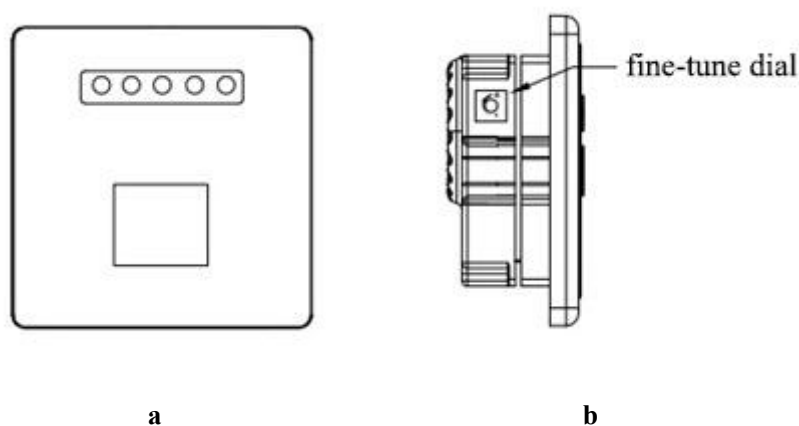


Fig. 4 Fan Speed Adjustment

Rotating the dial clockwise will reduce motor speed and rotating the dial counter-clockwise will increase motor speed.

Note: Adjusting the minimum speed is necessary for some motors, or the motor may not move due to too low a driving voltage.

How to Order:

Please contact us: Shenzhen Asia Bright Co., Ltd.

Floor 2nd~3rd, Building E, North Area No.2 of Shangxue
Science Park, Bantian, Shenzhen, China
Tel: +86-755-89748200 +86-755-89748211
Email: sales@a-brt.com Website: www.a-brt.com