

Product Descriptions

Rotary Speed Control Switch with Socket

Model #: BRT-782

(Please visit our website www.a-brt.com for more info)



Features:

BRT-782 is a rotary speed control switch for all kind of fans or other appliances using motors. It has an extension power cord and a socket for easy installation.

- Can be used as a portable device or a wall mount unit;
- Load up to 600W and overheat protection;
- Stepless speed control. Rotary knob for smooth speed adjustment;
- Minimum speed setting. The minimum speed can be fine-tuned by the user to suit for all kind of motors;
- ABS-V0 flame resistance material; and
- High quality builds.

Front View and Back View:

Fig. 1 and Fig. 2 show the front view and the back view of the BRT-782 speed control switch respectively. It has a rotary control unit on the right and a standard socket on the left. It comes with a power cord on the back.



Fig. 1 Front View



Fig. 2 Back View

Product Description of BRT-782

Shenzhen Asia Bright Co., Ltd.

Floor 2nd~3rd, Building E, North Area No.2 of Shangxue Science Park, Bantian, Shenzhen, China

www.a-brt.com. sales@a-brt.com.

© 2022 All rights reserved. Subject to change without notices.

Applications:

BRT-782 rotary speed control switch can be used for all kinds of appliances driven by motors, especially for high power loads such as cooling fans, ventilation fans, blowers, etc. It has wide applications at various locations such as homes, schools, laboratories, hospitals, bars, restaurants, etc.

Specification Parameters:

Input Voltage	220~240V(50Hz/60Hz)	Operation Environment	No-condensation 20-90% RH, -20℃~40℃
Load type	Motor	Wattage	600W
Dimension	176mm x 88mm x 43mm	Weight	470g

Wiring and Installation Guide:

When BRT-782 rotary speed control switch is used as a portable device, there is no need for further wiring installation. Once the power cord of BRT-782 is plugged to a wall socket or extension cord, it is ready to go.

When BRT-782 rotary speed control switch is used as a wall mount unit, the power cord can be removed and the unit is directly wired to power lines. Please find Wiring and Installation instructions as follows.

There are 5 wiring and installation steps (please refer to in Fig. 3):

- Step one: Open the switch cover, and use a screwdriver to pry off the front plates on lower edges;
- Step two: Take off the screws to remove the bottom plate;
- Step three: Take off the screws pointed by the red arrows to remove the cable clamp and the power cord that comes with the unit;
- Step four: Insert the wires into the terminal blocks and tighten the terminal block screws; and

Step five: Reverse step 3, 2, and 1 to reinstall the cable clamp, the bottom plate, and front plates. Finally, close the cover.

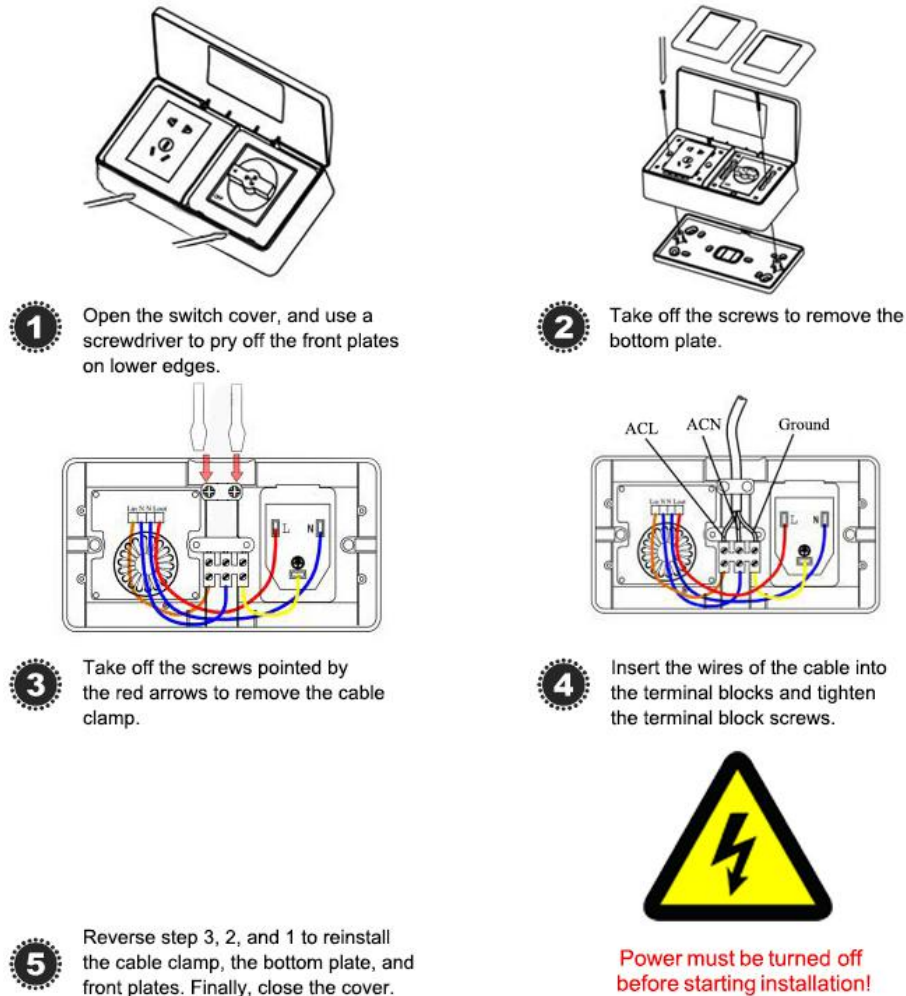


Fig. 3 BRT-780 Installation Guide

Operation Guide:

BRT-782 speed control switch is easy to operate. Once it is installed, plug the fan's power cord to the socket of BRT-782.

- 1. Turn on or turn off the fan and adjust fan speed:** As shown in Fig. 4a, Rotating the knob clockwise will turn on the fan and rotating the knob clockwise further more will reduce the fan speed. When the fan is on, rotating the knob counter-clockwise will increase the fan speed and rotating the knob counter-clockwise further more to the "Off" position will turn off

Product Description of BRT-782

Shenzhen Asia Bright Co., Ltd.

Floor 2nd~3rd, Building E, North Area No.2 of Shangxue Science Park, Bantian, Shenzhen, China

www.a-brt.com. sales@a-brt.com.

© 2022 All rights reserved. Subject to change without notices.

the fan; and

2. **Set the minimum fan speed limit:** As shown in Fig. 4b, the minimum fan speed can be fine-tuned by using a dial on the side of BRT-782 during initial installation. Turn on the fan and rotate the speed control knob to run the fan at the lowest speed. Then, rotate the fine-tune dial to obtain a minimum fan speed as desired.

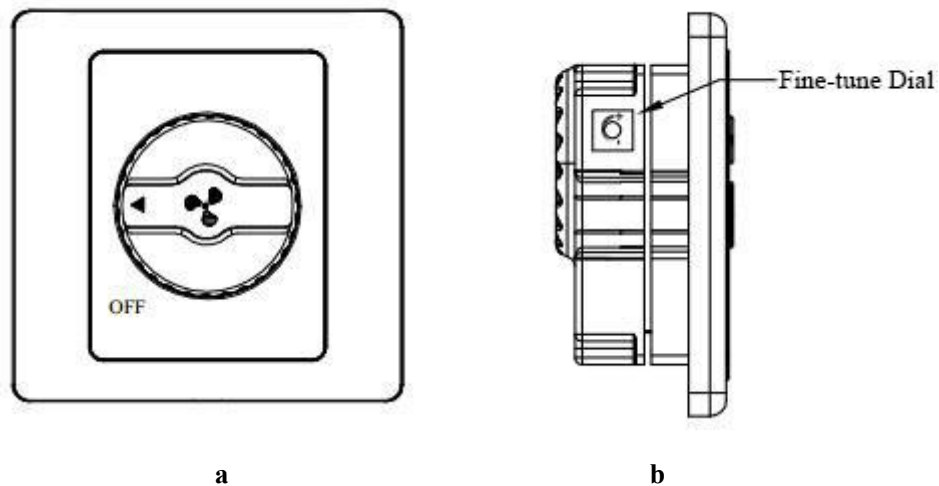


Fig. 4 Fan Speed Adjustment

Note: Adjusting the minimum speed is necessary for some motors, or the motor may not move due to too low a driving voltage.

How to Order:

Please contact us: Shenzhen Asia Bright Co., Ltd.
Floor 2nd~3rd, Building E, North Area No.2 of Shangxue
Science Park, Bantian, Shenzhen, China
Tel: +86-755-89748200 +86-755-89748211
Email: sales@a-brt.com Website: www.a-brt.com