

High Power Speed Control Switch

Model #: BRT-785



Features:

BRT-785 is a high power speed controller which has a built-in micro controller unit. It uses rotary knob for turning on or turning off the motor, and for adjusting the motor's speed. It is designed to be used as an in-line device.

- Load up to 2000W;
- Good for controlling multiple motor loads;
- Starts at highest speed;
- Adjustable minimum speed setting. The minimum speed can be fine-tuned by the user to suit for all kind of motors;
- Sturdy metal case; and
- High quality builds.

Front View and Side View:

Fig. 1 and Fig. 2 show the front view and the side view of BRT-785 speed control switch respectively. It has a rotary knob on its top and input and output terminal blocks on one end.

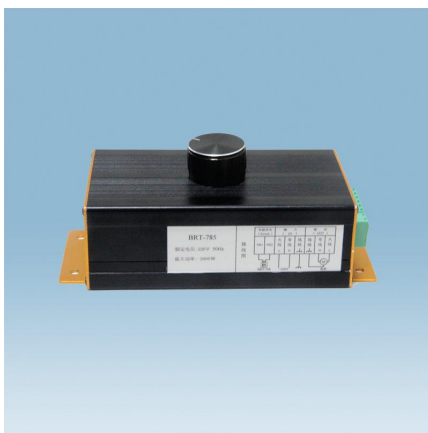


Fig. 1 Front View



Fig. 2 Side View

Product Description of BRT-785

Shenzhen Asia Bright Co., Ltd.

Floor 2nd~3rd, Building E, North Area No.2 of Shangxue Science Park, Bantian, Shenzhen, China

www.a-brt.com. sales@a-brt.com.

© 2023 All rights reserved. Subject to change without notices.

▶ Specification Parameters:

Input Voltage	220~240V(50Hz/60Hz)	Operation Environment	No-condensation 20-90% RH, -20℃~55℃
Load type	AC Motor	Wattage	2000W
Dimension	157mm x 76mm x 65mm	Weight	305g

▶ Wiring and Installation Guide:

BRT-785 speed control switch is used as an in-line device. It can be mounted on a flat surface by using 4 mounting holes on the bottom. As shown in Fig. 3, the device has 8 terminal blocks for wiring in a detachable connector on one end. All the terminal blocks are clearly labelled.

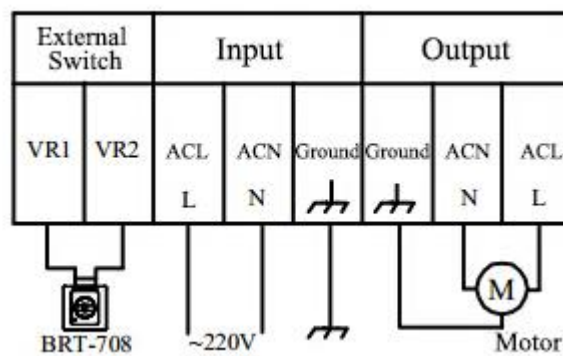


Fig. 3 BRT-785 Wiring Terminal Blocks

ACL: Hot wire

ACN; Neutral wire

VR1 and VR2 are for wiring external secondary control switch such as our wall mount switch BRT-708.

Installation must be done when power is turned off. Please follow the wiring diagram carefully.

Fig. 4 shows the wiring diagram and Fig. 5 shows the step-by-step installation instructions. There are three easy steps:

Step one: Detach the terminal block connector;

Step two: Connect the wires to the terminal block as per the wiring diagram; and

Step three: Re-attach the terminal block connector onto the switch.

Product Description of BRT-785

Shenzhen Asia Bright Co., Ltd.

Floor 2nd~3rd, Building E, North Area No.2 of Shangxue Science Park, Bantian, Shenzhen, China

www.a-brt.com. sales@a-brt.com.

© 2023 All rights reserved. Subject to change without notices.

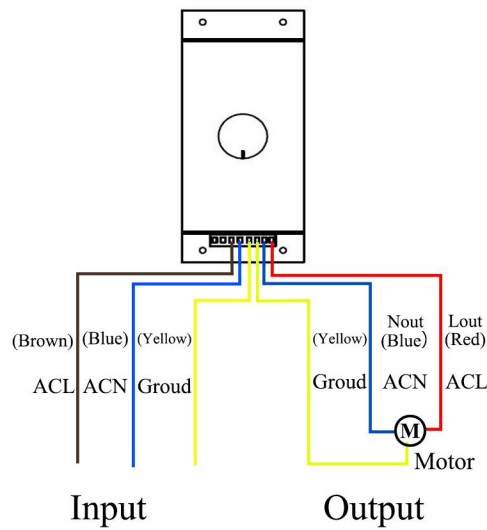


Fig. 4 BRT-785 Wiring Diagram

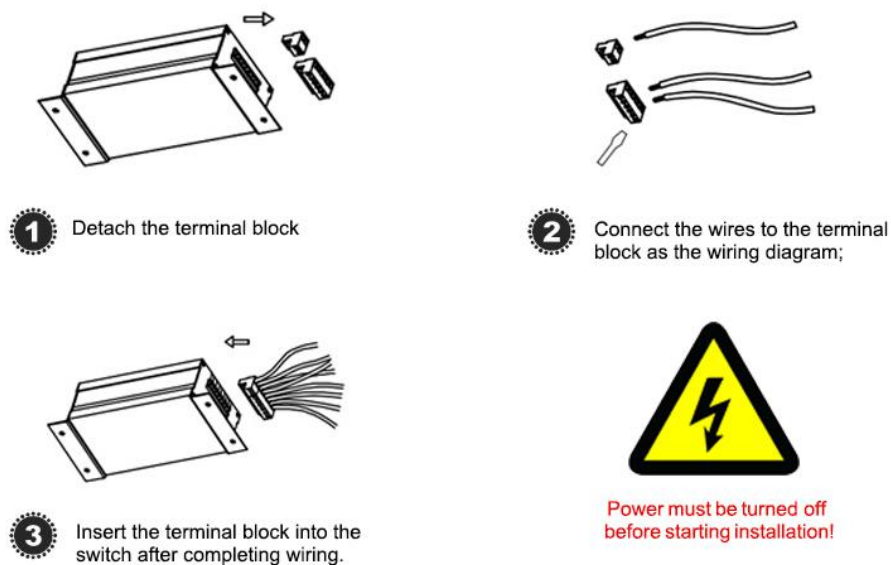


Fig. 5 BRT-785 Installation Guide

Operation Guide:

Once it is installed, BRT-785 speed control switch is easy to operate.

- 1. Turn on or turn off the fan and adjust fan speed:** Rotating the knob clockwise will turn on the fan and rotating the knob clockwise further more will reduce the fan speed. When the fan is on, rotating the knob counter-clockwise will increase the fan speed and rotating the

Product Description of BRT-785

Shenzhen Asia Bright Co., Ltd.

Floor 2nd~3rd, Building E, North Area No.2 of Shangxue Science Park, Bantian, Shenzhen, China

www.a-brt.com. sales@a-brt.com.

© 2023 All rights reserved. Subject to change without notices.

knob counter-clockwise further more will turn off the fan; and

2. **Set the minimum fan speed limit:** As shown in Fig. 6, the minimum fan speed can be fine-tuned by tuning a screw on the side of BRT-785 during initial installation. Turn on the fan and rotate the speed control knob to run the fan at the lowest speed. Then, turn the screw using a screw driver to obtain a minimum fan speed as desired.

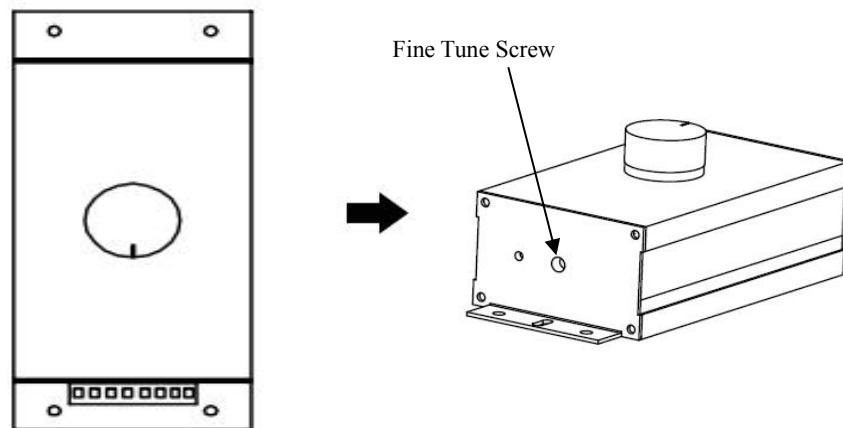


Fig. 6 Fan Speed Adjustment

Note: Adjusting the minimum speed is necessary for some motors, or the motor may not move due to too low a driving voltage.

When BRT-785 is used together with a secondary control switch, the control knob of BRT-785 should be set at maximum speed.

Applications:

BRT-785 keypad speed control switch can be used for all kinds of appliances driven by motors, especially for multiple high power loads such as cooling fans, ventilation fans, blowers, etc. It has wide applications at various locations such as homes, schools, laboratories, hospitals, bars, restaurants, etc.

How to Order:

Please contact us: Shenzhen Asia Bright Co., Ltd.
Floor 2nd~3rd, Building E, North Area No.2 of Shangxue
Science Park, Bantian, Shenzhen, China
Tel: +86-755-89748200 +86-755-89748211
Email: sales@a-brt.com Website: www.a-brt.com

Product Description of BRT-785

Shenzhen Asia Bright Co., Ltd.
Floor 2nd~3rd, Building E, North Area No.2 of Shangxue Science Park, Bantian, Shenzhen, China
www.a-brt.com. sales@a-brt.com.

© 2023 All rights reserved. Subject to change without notices.