

## Product Descriptions

### Rotary Speed Control Switch (Neutral Required)

**Model #:** BRT-704

(Please visit our website [www.a-brt.com](http://www.a-brt.com) for more info)



#### **Features:**

BRT-704 is a speed control switch which has a built-in micro controller unit. It uses a rotary knob for turning on or turning off the motor, and for adjusting the motor's speed. BRT-704 is designed for easy installation and retrofit, directly fit into standard wall box where both hot wire and neutral wire are present.

- Stepless speed control;
- Minimum speed setting. The minimum speed can be fine-tuned by the user to suit for all kind of motors;
- LED lights showing fan speed;
- ABS-V0 flame resistance material; and
- Classical 86 series design and high quality build.

#### **Front View and Back View:**

Fig. 1 and Fig. 2 show the front view and the back view of BRT-704 speed control switch respectively.



**Fig. 1** Front View



**Fig. 2** Back View

*Product Description of BRT-704*

Shenzhen Asia Bright Co., Ltd.

Floor 2<sup>nd</sup>~3<sup>rd</sup>, Building E, North Area No.2 of Shangxue Science Park, Bantian, Shenzhen, China

[www.a-brt.com](http://www.a-brt.com). [sales@a-brt.com](mailto:sales@a-brt.com).

© 2022 All rights reserved. Subject to change without notices.

As shown in Fig. 1 and Fig. 2, BRT-704 speed control switch has a Rotary knob on the front, and wiring terminal blocks on the back.

### Specification Parameters:

Input Voltage	220~240V(50Hz/60Hz)	Operation Environment	No-condensation 20-90% RH, -20℃~55℃
Wattage	150W	Load type	Motor
Mounting Hole Spacing	60mm	Matching Box	75mm x 75mm x 50mm
Dimension	86mm x 86mm x 42mm	Weight	80g

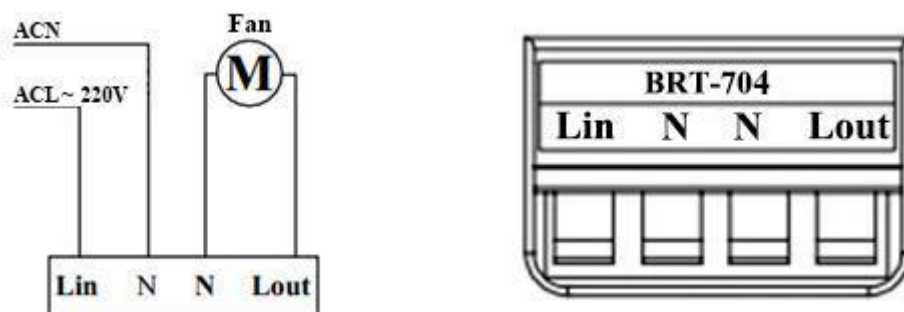
### Wiring Diagram and Installation Guide:

BRT-704 speed control switch requires both hot wire and neutral wire for installation:

Hot wire (ACL): Coming from the power line with 220V;

Neutral wire (ACN): Usually coming with the hot wire; and

Load wires: Going to the load.

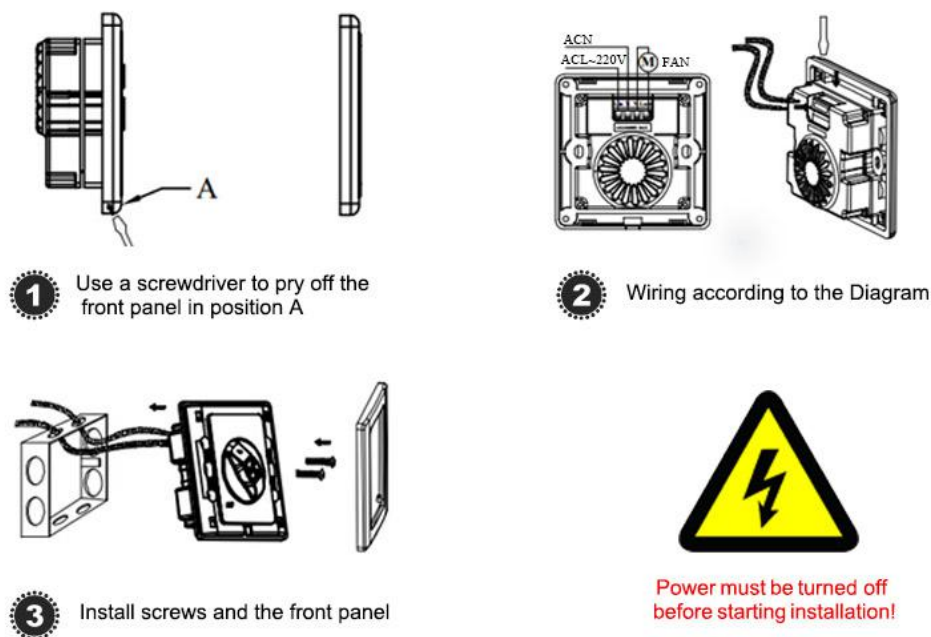


**Fig. 3** BRT-704 Wiring Diagram

**Warning:** *Please make sure power is turned off before starting installation!*

Fig. 3 shows the wiring diagram and Fig. 4 shows the step-by-step installation instructions. There are three easy steps:

- Step one: Use a screwdriver to pry off the front plate in position A;
- Step two: Wiring according to the diagram and the labelled ports of the switch; and
- Step three: Install screws and front plate.



**Fig. 4** BRT-704 Installation Guide

#### **Operation Guide:**

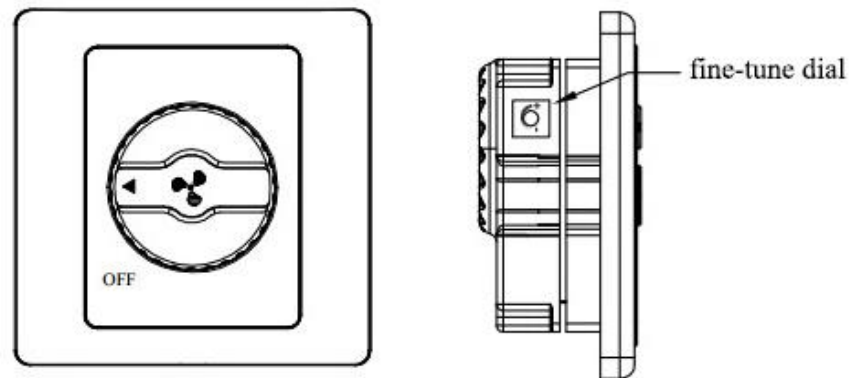
BRT-704 speed control switch delivers stepless smooth control, and the speed is adjusted by using the rotary knob on the front.

**Turn on or turn off:** Rotating the knob clockwise away from the “OFF” position will turn on the motor at its last speed and the fan is always turned on at the highest speed. Rotating the knob counter-clockwise to the “OFF” position will turn off the motor.

**Adjust the speed:** Rotating the knob clockwise will decrease the speed, and rotating the knob counter-clockwise will increase the speed.

**Adjust the minimum speed:** For the first time operation, adjusting the minimum speed may be necessary for some motors, or the motor may not move due to too low a driving voltage. There is a fine tuning dial on the side of BRT-704 speed control switch, as shown in Fig 5. This dial is used for adjusting the minimum speed.

First, set the fan speed at minimum using the front rotary knob. Then, rotate the dial to yield a minimum speed as desired.



**Fig. 5** Adjust the Minimum Speed

#### **Applications:**

BRT-704 speed control switch is ideal for regulating all kinds of motors, especially for high power motor loads. It has wide applications at various locations such as homes, schools, laboratories, hospitals, bar, restaurant, etc, to control the speed of ventilation fans, pumps, or blowers.

#### **How to Order:**

Please contact us:      Shenzhen Asia Bright Co., Ltd.  
Floor 2<sup>nd</sup>~3<sup>rd</sup>, Building E, North Area No.2 of Shangxue  
Science Park, Bantian, Shenzhen, China  
Tel:   +86-755-89748200    +86-755-89748211  
Email: [sales@a-brt.com](mailto:sales@a-brt.com)    Website: [www.a-brt.com](http://www.a-brt.com)