

Product Descriptions

Keypad Speed Control Switch (Neutral Required)

Model #: BRT-707

(Please visit our website www.a-brt.com for more info)



Features:

BRT-707 is a speed control switch which has a built-in micro controller unit. It uses one button for turning on or turning off the motor, and for adjusting the motor's speed. BRT-707 is designed for easy installation and retrofit, directly fit into standard wall box where both hot wire and neutral wired are present.

- Load up to 600W and overheat protection;
- 5 speed settings;
- Memory function. The motor always starts at last speed;
- Minimum speed setting. The minimum speed can be fine-tuned by the user to suit for all kind of motors;
- LED lights showing fan speed;
- ABS-V0 flame resistance material; and
- Classical 86 series design and high quality build.

Front View and Back View:

Fig. 1 and Fig. 2 show the front view and the back view of BRT-707 speed control switch respectively.



Fig. 1 Front View**Fig. 2** Back View

As shown in Fig. 1 and Fig. 2, BRT-707 speed control switch has one keypad and 5 LED indicators on the front, and wiring terminal blocks on the back. Each LED indicates the current fan speed, respectively.

Specification Parameters:

| | | | |
|-----------------------|---------------------|-----------------------|-------------------------------------|
| Input Voltage | 220~240V(50Hz/60Hz) | Operation Environment | No-condensation 20-90% RH, -20℃~55℃ |
| Wattage | 600W | Load type | Motor |
| Mounting Hole Spacing | 60mm | Matching Box | 75mm x 75mm x 50mm |
| Dimension | 86mm x 86mm x 43mm | Weight | 89g |

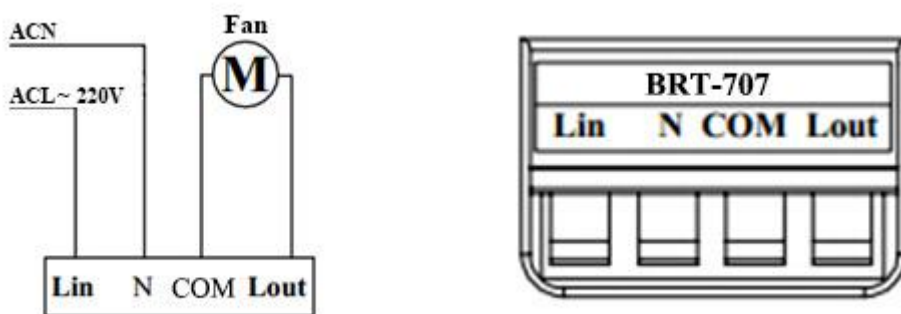
Wiring Diagram and Installation Guide:

BRT-707 speed control switch requires both hot wire and neutral wire for installation:

Hot wire (ACL): Coming from the power line with 220V;

Neutral wire (ACN): Usually coming with the hot wire; and

Load wire: Going to the load.

**Fig. 3** BRT-707 Wiring Diagram

Warning: Please make sure power is turned off before starting installation!

Fig. 3 shows the wiring diagram and Fig. 4 shows the step-by-step installation instructions. There are three easy steps:

Step one: Use a screwdriver to pry off the front plate in position A;

Product Description of BRT-707

Shenzhen Asia Bright Co., Ltd.

Floor 2nd~3rd, Building E, North Area No.2 of Shangxue Science Park, Bantian, Shenzhen, China

www.a-brt.com. sales@a-brt.com.

© 2022 All rights reserved. Subject to change without notices.

Step two: Wiring according to the diagram and the labelled ports of the switch; and

Step three: Install screws and front plate.

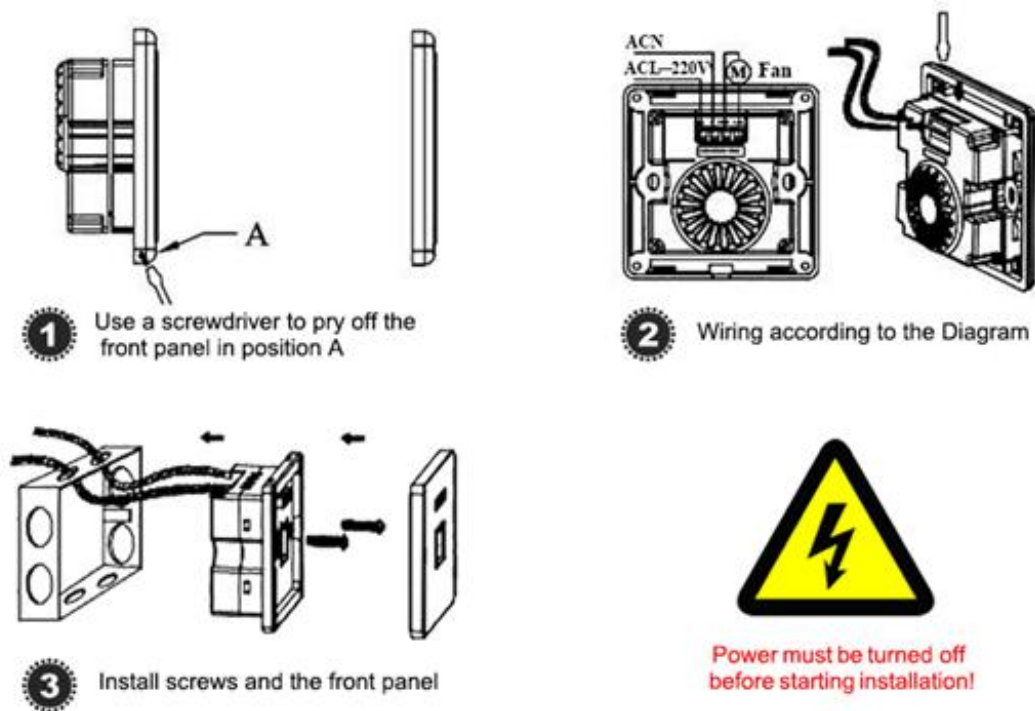


Fig. 4 BRT-707 Installation Guide

Operation Guide:

BRT-707 speed control switch has 5 different speed settings, and the speed is adjusted by pressing the keypad on the front.

Turn on or turn off: Pressing the keypad will turn on the motor at its last speed (the first time turn-on will be at the highest speed), and pressing again will turn off the motor.

Adjust the speed: Pressing and holding down the keypad will cycle the motor speed in 5 different speed settings. The speed is adjusted by pressing the keypad on the front.

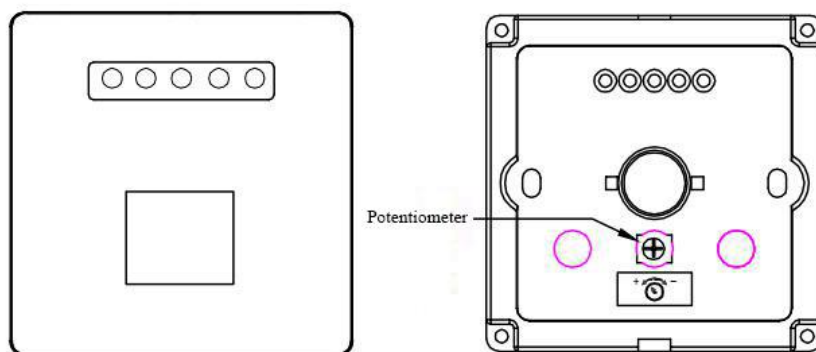


Fig. 5 Adjust the Minimum Speed

Adjust the minimum speed: Set the motor speed at the lowest using the keypad on the front first. Remove the front plate to have access to a potentiometer as shown in Fig. 5. Use a screw driver to adjust this potentiometer to yield different minimum speed as desired. Rotating the potentiometer clockwise will reduce motor speed and rotating the potentiometer counter-clockwise will increase motor speed.

Note: Adjusting the minimum speed is necessary for some motors, or the motor may not move due to too low a driving voltage.

Applications:

BRT-707 speed control switch is ideal for regulating all kinds of motors, especially for high power motor loads. It has wide applications at various locations such as homes, schools, laboratories, hospitals, bar, restaurant, etc, to control the speed of ventilation fans, pumps, or blowers.

How to Order:

Please contact us: Shenzhen Asia Bright Co., Ltd.
Floor 2nd~3rd, Building E, North Area No.2 of Shangxue
Science Park, Bantian, Shenzhen, China
Tel: +86-755-89748200 +86-755-89748211
Email: sales@a-brt.com Website: www.a-brt.com