

## Timer Switch with Remote Control (Neutral Required)

Model #: BRT-605



### **Features:**

BRT-605 is a timer switch kit which consists of a wall mount unit and a remote control set. The user can control the load either directly using the wall mount unit or using the remote. The wall mount unit is designed for easy installation and retrofit, directly fit into standard wall box.

- One button operation and hidden keypad panel for timer settings;
- Delay off time up to 30 minutes, which can be set accurately to a second;
- Remote control distance up to 15m;
- LCD display showing the current time and the current status of the switch;
- Good for all kinds of loads (Resistive, inductive, and capacitive);
- ABS-V0 flame resistance material; and
- Classical 86 series design and high quality build.

### **Front View, Back View, Hidden Panel and Remote Set:**

Fig. 1 and Fig. 2 show the front view and the back view of the wall mount unit of BRT-605 timer switch respectively.



**Fig. 1** Front View



**Fig. 2** Back View

*Product Description of BRT-605*

Shenzhen Asia Bright Co., Ltd.

Floor 2<sup>nd</sup>~3<sup>rd</sup>, Building E, North Area No.2 of Shangxue Science Park, Bantian, Shenzhen, China

[www.a-brt.com](http://www.a-brt.com). [sales@a-brt.com](mailto:sales@a-brt.com).

© 2022 All rights reserved. Subject to change without notices.

As shown in Fig. 1, the wall mount unit of BRT-605 timer switch has an LCD display and an On/Off buttons in the front. The LCD display shows the current time and the current status of the switch. The On/Off button is used for turning on or turning off a load.

When the On/Off button is pressed,

The display shows On and the load will be turned on immediately; and

When the On/Off button is presses again, the display will show Off, and

If there is no delay off time being set, the load will be turned off immediately; or

If there is delay off time being set, the load will be turned off only after the preset delay off time runs out. Meanwhile, the display will show a “bell” sign. Press the On/Off button will cancel the delay off operation and turn off the load immediately.



**Fig.3** Hidden 9 Keypad Panel

As shown in Fig. 3, the front plate can be flipped down from the top edge. A 9 keypad panel hidden behind the front plate is used for setting up the timer. Please refer to “BRT-605 Timer Switch Setup” for details.



**Fig.4** Remote Control Set

Fig. 4 shows the remote control set. Each of the buttons can be used as an on/off button. Although there are 6 buttons on the remote, only one button is needed to control one BRT-605 wall mount unit. The remote set can be set to control up to six BRT-605 wall mount units. Please refer to “BRT-605 Timer Switch Setup” for details.

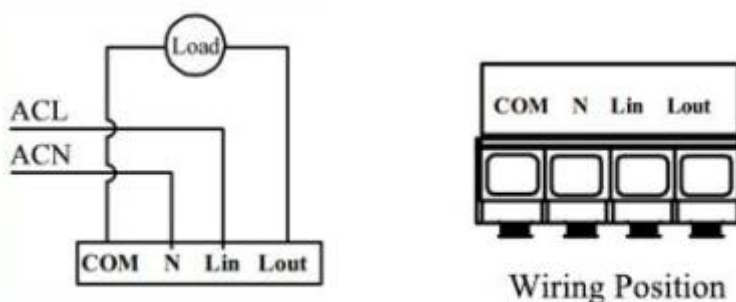
#### Specification Parameters:

Input Voltage	220~240V(50Hz/60Hz)	Operation Environment	No-condensation 20-90% RH, -20℃~55℃
Wattage	2000W	Load type	All Types
Mounting Hole Spacing	60mm	Matching Box	75mm x 75mm x 50mm
Wall Mount Unit Dimension	86mm x 86mm x 43mm	Wall mount Unit Weight	112g
Remote Set Dimension	102mm x 43mm x 13mm	Remote Set Weight	33g

#### Wiring Diagram and Installation Guide:

The wall mount unit of BRT-605 timer switch requires both hot wire and neutral wire for installation:

- Hot wire (ACL): Coming from the power line with 220V;
- Neutral wire (ACN): Usually coming with the hot wire;
- Load wires: Going to the load.

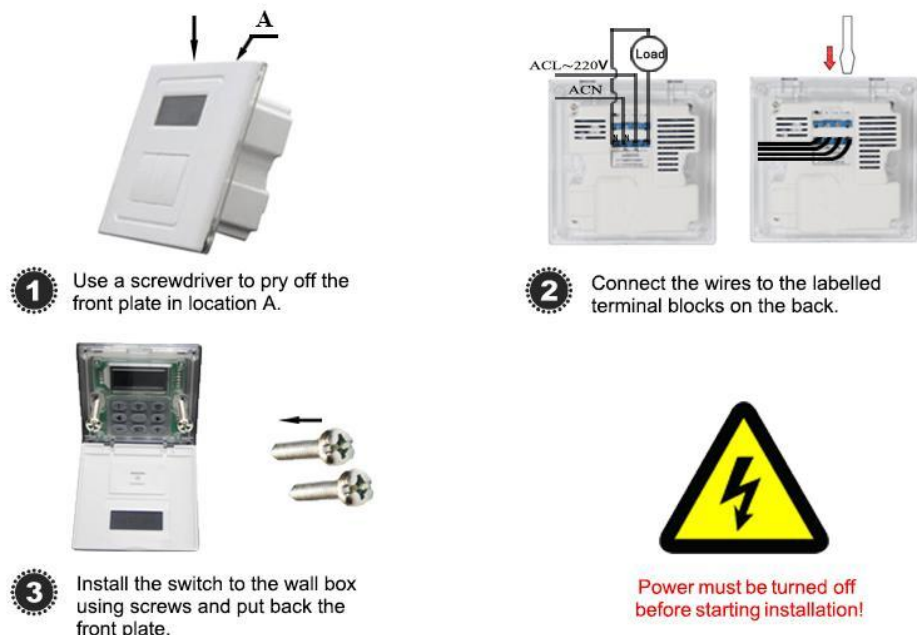


**Fig. 5** Wiring Diagram of Wall Mount Unit

**Warning:** Please make sure power is turned off before starting installation!

Fig. 5 shows the wiring diagram and Fig. 6 shows the step-by-step installation instructions. There are three easy steps:

Step one: Use a screwdriver to pry off the front plate in position A;



**Fig. 6** Installation Guide of Wall Mount Unit

#### **BRT-605 Timer Switch Setup:**

1. Following the wiring diagram and Installation Guide to set up the wall mount unit, and power it with 220 voltages.
2. Flip down the front plate from the top edge.
3. Set up Time and Date: Press the **SET** button, the displayed hours will flash, and then press - or + to adjust the hours. Press the **SET** button again, the displayed minutes will flash, and then press - or + to adjust the minutes. Press the **SET** button again, the displayed date will flash, and then press - or + to adjust the date. Finally, press the SET button to finish and the settings are saved.
4. Set up Delay off Time: The longest delay off time is 30 minutes. Press the **II** button to set the minutes, and then press button ◁ or ▷ to adjust the minutes. Press the **II** button again to set the seconds, and then press button ◁ and ▷ to adjust the seconds. Finally, press and hold the **II** button to save the settings or the settings will be saved automatically if there is no keypad operation for 15 seconds.

Once the settings are finished, flip up and close the front plate. The delay off time can be deleted following Step 2 above and Step 5 below.

5. Delete the Delay off Time setting: Press the **II** button to set the minutes to 00 using - or +, and press the **II** button again to set the seconds to 00 using - or +. The switch will just have a basic ON/OFF function.

At this point, the wall mount unit is ready to control the load. In order to control the load remotely using a remote set, the remote set needs to be synchronized with the wall mount unit.

6. Install one 12V 23A battery into the remote set.
7. Synchronize the wall mount unit with the remote: Flip down the front plate from the top edge. Press and hold “**III**” button for 2 seconds until the display show "**SE**". Then, press one of the 6 buttons on the remote until "**SE**" disappears. This button is now set up to control the wall mount unit specifically. The synchronization process can last up to 20 seconds.

### **Applications:**

BRT-605 timer switch kit can be used for automatically turning off all kinds of loads such as fans, lights, appliances, or other kinds of electrical equipment. They are perfect for saving energy and bringing convenience and safety to our daily life and work. The remote set is especially handy.

The elegant design of BRT-605 timer switch makes it suitable for wide applications at various locations such as homes, schools, laboratories, hospitals, offices, etc., especially for luxurious hotels and high-grade villas.

### **How to Order:**

Please contact us:      Shenzhen Asia Bright Co., Ltd.  
Floor 2<sup>nd</sup>~3<sup>rd</sup>, Building E, North Area No.2 of Shangxue  
Science Park, Bantian, Shenzhen, China  
Tel: +86-755-89748200 / 89748211  
Email: [sales@a-brt.com](mailto:sales@a-brt.com)      Website: [www.a-brt.com](http://www.a-brt.com)