

## Product Description

### Recycling Timer Socket

**Model #:** BRT-482

Please visit our website: [www.a-brt.com](http://www.a-brt.com) for more info.



#### **Features:**

BRT-482 is the most advanced recycling timer socket. It is controlled by a micro controller unit and has very accurate timing capability and duty cycle settings. It has an extension power cord and a socket for easy installation and operation.

- Can be used as a portable device or a wall mount unit;
- Auto recycling for up to three recycling timing periods with multiple duty cycles;
- Manually triggered recycling with up to five duties cycles;
- LCD display showing current clock time, recycling timing period # and duty cycle periods;
- User friendly front panel key pads for easy manual operation or automatic timing settings;
- Load up to 2000W;
- ABS-V0 flame resistance material; and
- Classical 86 series design and high quality build.

#### **LCD Display and Front Panel Buttons:**

Fig. 1 and Fig. 2 show the front view and the back view of BRT-482 recycling timer socket respectively.



**Fig. 1** Front View



**Fig. 2** Back View

As shown in Fig. 3, the BRT-482 recycling timer socket has an LCD display and 6 buttons in the front. The LCD display shows clock time, recycling timing period #, and duty cycle period # for the current timing period.



**Fig. 3** Front Control Panel and LCD Display

The 6 buttons are used to turn on/off the load, and set clock time and timing settings.

**ON/OFF:** Power on or off the load, or run manual recycling mode. It can override the switch's automatic recycling.

**ALLOFF:** Switch displayed digits to be changes.

**Clock:** Press the button to enter clock setup mode. It is also used to enter the setup mode for manual recycling settings.

**Timer:** Press the button to enter duty cycle setup mode.

◀: Press the button to decrease the time when the digits are flashing; or

▶: Press the button to increase the time when the digits are flashing; or

### **Applications:**

BRT-482 recycling timer socket is used for automatically turning on and/or turning off various loads in preset duty cycles. These loads include fans, lights, appliances, or other kinds of electrical equipment. They are perfect for bringing convenience and safety to our daily life and work.

They have wide applications at various locations such as factories, laboratories, hospitals, farms, etc. The typical application scenes include:

**Factories:** Automatically run equipment for aging test;

*Product Description of BRT-482*

Shenzhen Asia Bright Co., Ltd.

Floor 2<sup>nd</sup>~3<sup>rd</sup>, Building E, North Area No.2 of Shangxue Science Park, Bantian, Shenzhen, China

[www.a-brt.com](http://www.a-brt.com). [sales@a-brt.com](mailto:sales@a-brt.com).

© 2022 All rights reserved. Subject to change without notices.

**Hospitals or Laboratories:** Automatically turn on and turn off UV disinfection equipment to isolate operators from harmful UV exposure; and

**Farms:** Automatically turn on or turn off irrigation equipment.

#### **Specification Parameters:**

Input Voltage	220~240V(50Hz/60Hz)	Operation Environment	No-condensation 20-90% RH, -20℃ ~55℃
Load type	All types	Wattage	2000W
Dimension	176mm x 88mm x 43mm	Weight	470g

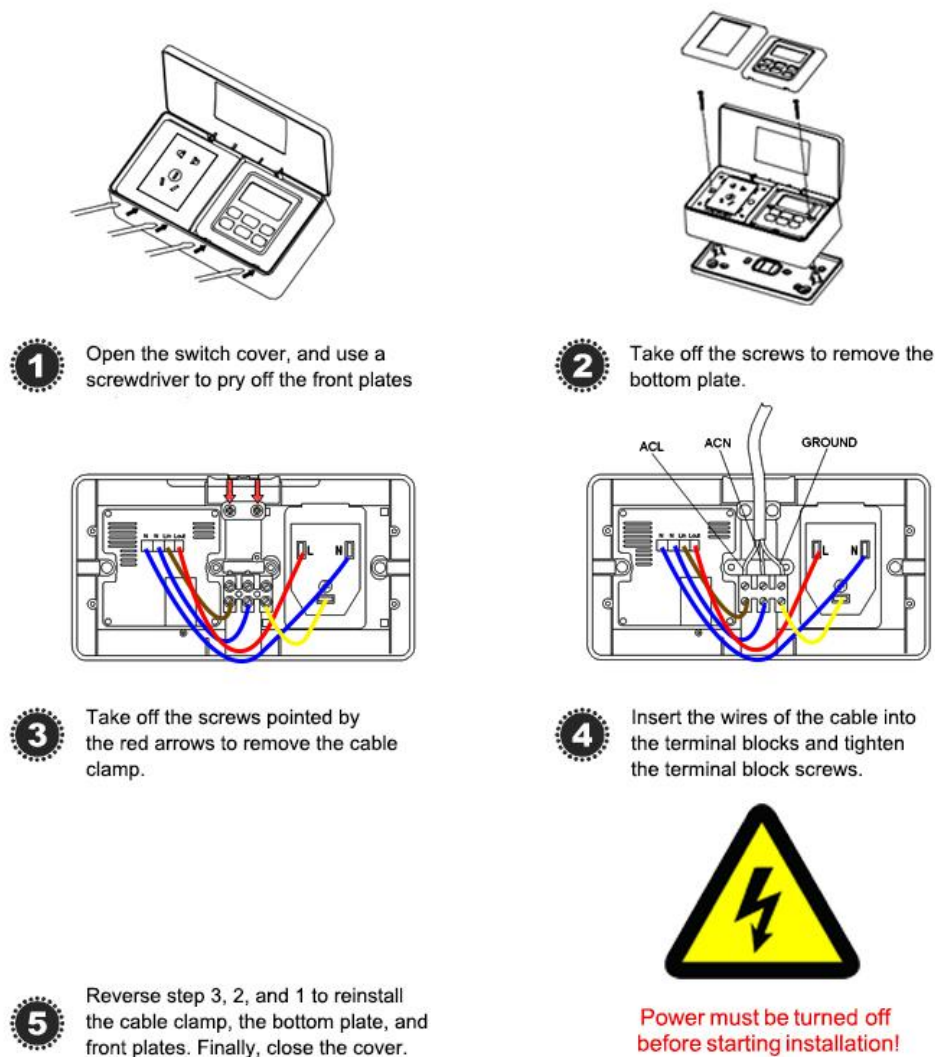
#### **Wiring and Installation Guide:**

When BRT-482 and BRT-482B are used as a portable device, there is no need for further wiring installation. Once the power cord of BRT-482 or BRT-482B is plugged to a wall socket or extension cord, it is ready to go.

When BRT-482 and BRT-482B are used as a wall mount unit, the power cord can be removed and the unit is directly wired to power lines. Please find Wiring and Installation instructions as follows.

There are 5 wiring and installation steps (please refer to in Fig. 4):

- Step one: Open the switch cover, and use a screwdriver to pry off the front plates on lower edges;
- Step two: Take off the screws to remove the bottom plate;
- Step three: Take off the screws pointed by the red arrows to remove the cable clamp and the power cord that comes with the unit;
- Step four: Insert the wires into the terminal blocks and tighten the terminal block screws; and
- Step five: Reverse step 3, 2, and 1 to reinstall the cable clamp, the bottom plate, and front plates. Finally, close the cover.



**Fig. 4** Installation Wiring

#### **BRT-482 Recycling Timer Socket Setup:**

##### **1. Set up the clock:**

1.1 Press the "Clock" button and hold for 3 seconds to enter the clock setup mode, the hour display starts to flash; press "◀" or "▶" to adjust the hours (holding down "◀" or "▶" will adjust the hours quickly);

1.2 Press the "ALLOFF" button again, the minute display starts to flash; press "◀" or "▶" to adjust the minutes (holding down "◀" or "▶" will adjust the minutes quickly); and

1.3 Press and hold the "Clock" button until clock display stops flashing. The clock settings are saved.

*Product Description of BRT-482*

Shenzhen Asia Bright Co., Ltd.

Floor 2<sup>nd</sup>~3<sup>rd</sup>, Building E, North Area No.2 of Shangxue Science Park, Bantian, Shenzhen, China

[www.a-brt.com](http://www.a-brt.com) . [sales@a-brt.com](mailto:sales@a-brt.com) .

© 2022 All rights reserved. Subject to change without notices.

(Note: If there is no button operation for 15 seconds, the clock settings will be automatically saved).

## 2. Set up timing period and duty cycles for auto recycling:

BRT-482 can automatically start recycling at preset time. Up to three recycling timing periods can be set up. Within each timing period, up to five different duty cycle periods can be set.

### Timing periods:

- 2.1 Set up the On time for timing period: Press and hold the "Timer" button for 3 seconds until the hour display starts to flash to enter timing period setup mode. Press "◀" or "▶" to adjust the hours (holding down "◀" or "▶" will adjust the hours quickly). Press the "ALLOFF" button, the minute display starts to flash; press "◀" or "▶" to adjust the minutes (holding down "◀" or "▶" will adjust the minutes quickly); and
- 2.2 Set up the Off time for timing period: Once the On time for a timing period is set up, press the "ALLOFF" button to set the Off time of the timing period. The hour display starts to flash and the right lower corner of the display shows "CL". Press "◀" or "▶" to adjust the hours (holding down "◀" or "▶" will adjust the hours quickly). Press the "ALLOFF" button, the minute display starts to flash; press "◀" or "▶" to adjust the minutes (holding down "◀" or "▶" will adjust the minutes quickly);

Once the timing period is set up, proceed to set up the duty cycles. The longest available cycle time is 90 minutes and the shortest available cycle time is 5 seconds.

### Duty cycles:

- 2.3 Press the "Timer" button to set the first On cycle time of the timing period. The minute display starts to flash and the left upper corner of the display shows "on1". Press "◀" or "▶" to adjust the minutes (holding down "◀" or "▶" will adjust the minutes quickly). Press the "ALLOFF" button, the second display starts to flash; press "◀" or "▶" to adjust the seconds (holding down "◀" or "▶" will adjust the seconds quickly); and
- 2.4 Once the first On cycle time for a timing period is set up, press the "ALLOFF" button to set the first Off cycle time of the timing period. The minute display starts to flash and the left upper corner of the display shows "off1". Press "◀" or "▶" to adjust the minutes (holding down "◀" or "▶" will adjust the minutes quickly). Press the "ALLOFF" button, the second display starts to flash; press "◀" or "▶" to adjust the seconds (holding down "◀" or "▶" will adjust the seconds quickly);

Up to five different On cycles and 5 different Off cycles can be set up for each timing period in sequence. Repeat 2.3 and 2.4 to set up more cycles as desired.

Once the first timing period and its duty cycles are set up, proceed to set up the On/Off time and On/Off cycles for the second timing period.

Once all the timing periods and their duty cycles are set up, press and hold the "Timer" button until clock display stops flashing. The settings are saved. If there is no button operation for 15 seconds, the settings will be automatically saved as well.

### **3. Manually triggered recycling:**

BRT-482 can also start recycling anytime by pressing the "On" button. The duty cycle periods need to be set first by the steps as follows:

- 3.1 Right after setting up the clock time in step 1.2, press "Clock" button to enter manual recycling setup mode;
- 3.2 Follow step 2.3 and step 2.4 to set duty cycle periods as desired. Up to five different On cycles and 5 different Off cycles can be set; and
- 3.3 Once the duty cycles are set up, press and hold the "Timer" button until clock display stops flashing. The settings are saved. If there is no button operation for 15 seconds, the settings will be automatically saved as well.

The recycling process can be stopped anytime by pressing the "Off" button.

### **4. Delete settings**

All the saved settings can be deleted by changing the settings to "--:--" by following the steps above.

### **How to Order:**

Please contact us:     Shenzhen Asia Bright Co., Ltd.  
Floor 2<sup>nd</sup>~3<sup>rd</sup>, Building E, North Area No.2 of Shangxue  
Science Park, Bantian, Shenzhen, China  
Tel:   +86-755-89748200    +86-755-89748211  
Email: [sales@a-brt.com](mailto:sales@a-brt.com)    Website: [www.a-brt.com](http://www.a-brt.com)