

Product Descriptions:

Timer Socket with Weekly Multiple Period Settings

Model #: **BRT-481**
 BRT-481B

(You can visit our website www.a-brt.com for more info.)



Features:

BRT-481 and BRT-481B are the most advanced timer sockets. They are controlled by a micro controller unit and have very accurate timing capability. It has an extension power cord and a socket for easy installation and operation.

BRT-481 has accurate timing setting to a second, while BRT-481B has accurate timing setting to a minute.

- Can be used as a portable device or a wall mount unit;
- Up to 20 timing periods available within each day, and memory function and password protection for the settings;
- LCD display showing current time, timing period #, next On time and current day;
- Manual control or automatic control available.
- Load up to 2000W;
- ABS-V0 flame resistance material; and
- Classical 86 series design and high quality build.

LCD Display and Front Panel Buttons:

Fig. 1 and Fig. 2 show the front view and the back view of the BRT-481 and BRT-481B timer sockets respectively. It has a keypad control unit on the right and a standard socket on the left.



Fig. 1 Front View

Fig. 2 Back View

The device comes with a power cord on the back.

As shown in Fig. 3, the BRT-481 and BRT-481B timer sockets have an LCD display and 6 buttons in the front. The LCD display shows clock time, timing period #, timer On time for the current timing period, and current day of the week.



Fig.3 Front Control Panel and LCD Display

The 6 buttons are used to turn on/off the load, and set clock time and timing settings.

- ON:** Power on the load. It can override the timer's automatic control; and
In the timer setup mode, pressing the button will change the day setting or go to the previous timing period.
- OFF:** Power off the load. It can override the timer's automatic control; and
In the timer setup mode, pressing the button will change the day setting or go to the next timing period.
- Clock:** Press the button to enter clock setup mode, or password setup mode.
- Timer:** Press the button to enter timer setup mode.
- ◀:** Press the button to decrease the time, when the clock setting mode or the timer setting mode is selected and the digits are flashing; or
When the clock digits are not flashing, pressing and holding the button for 3 seconds will go to the previous timing period or pressing and holding the button for 5 seconds will check the previous timing setting.

▶: Press the button to increase the time, when the clock setting mode or the timer setting mode is selected and the digits are flashing; or

When the clock digits are not flashing, pressing and holding the button for 3 seconds will go to the next timing period or pressing and holding the button for 5 seconds will check the next timing setting.

Applications:

BRT-481 timer socket and BRT-481B timer sockets are used for automatically turning on and/or turning off various loads such as fans, lights, appliances, or other kinds of electrical equipment. They are perfect for saving energy and bringing convenience and safety to our daily life and work.

They have wide applications at various locations such as homes, schools, laboratories, hospitals, offices, etc. The typical application scenes include:

Schools: Automatically ring the bells according to a fixed timetable to relieve manual intervention.

Hospitals or Laboratories: Automatically turn on and turn off UV disinfection equipment to isolate operators from harmful UV exposure.

Farms: Automatically turn on or turn off breeding equipment or lighting equipment for animals.

Specification Parameters:

Input Voltage	220~240V(50Hz/60Hz)	Operation Environment	No-condensation 20-90% RH, -20℃~55℃
Load type	All types	Wattage	2000
Dimension	176mm x 88mm x 43mm	Weight	470g

Wiring and Installation Guide:

When BRT-481 and BRT-481B are used as a portable device, there is no need for further wiring installation. Once the power cord of BRT-481 or BRT-481B is plugged to a wall socket or extension cord, it is ready to go.

When BRT-481 and BRT-481B are used as a wall mount unit, the power cord can be removed and the unit is directly wired to power lines. Please find Wiring and Installation instructions as follows.

There are 5 wiring and installation steps (please refer to in Fig. 4):

- Step one: Open the switch cover, and use a screwdriver to pry off the front plates on lower edges;
- Step two: Take off the screws to remove the bottom plate;
- Step three: Take off the screws pointed by the red arrows to remove the cable clamp and the power cord that comes with the unit;
- Step four: Insert the wires into the terminal blocks and tighten the terminal block screws; and
- Step five: Reverse step 3, 2, and 1 to reinstall the cable clamp, the bottom plate, and front plates. Finally, close the cover.

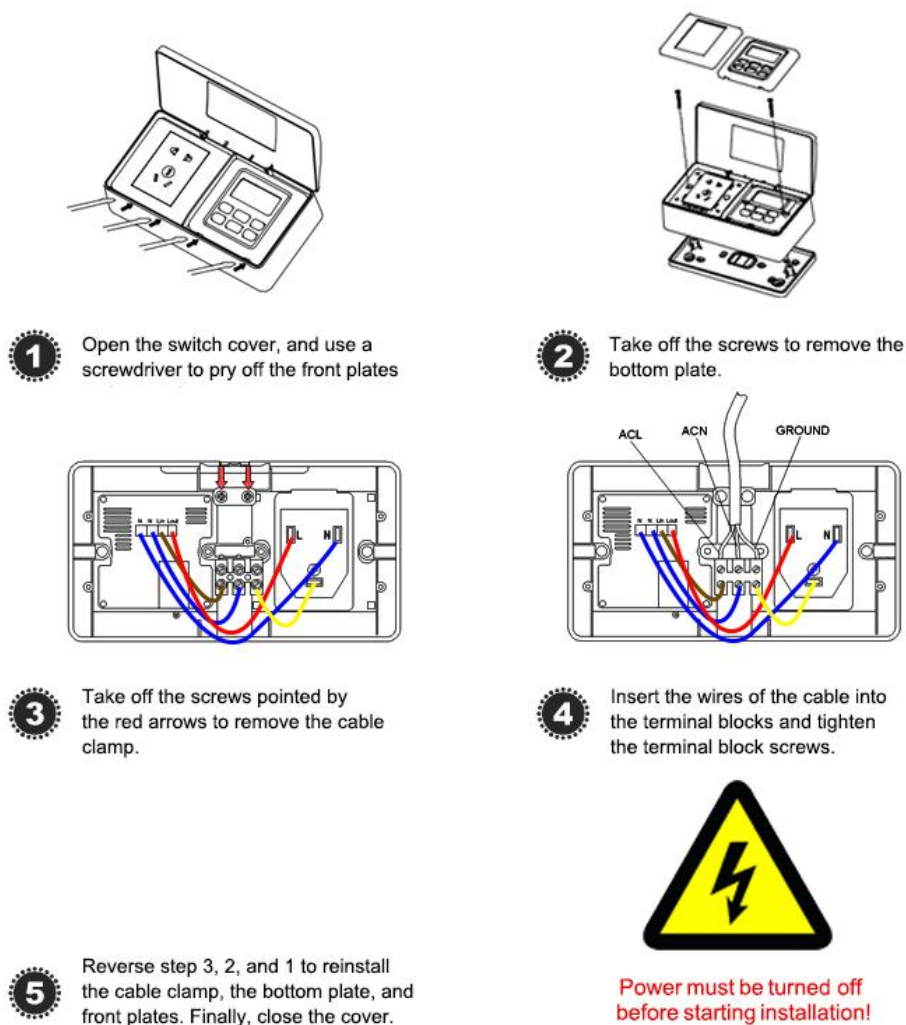


Fig. 4 Installation Guide

BRT-481 Timer Socket Setup:

1. Set up the clock:

1.1 Press the "Clock" button and hold for 3 seconds to enter the clock setup mode, the hour display starts to flash; press "◀" or "▶" to adjust the hours (holding down "◀" or "▶" will adjust the hours quickly);

1.2 Press the "Clock" button again, the minute display starts to flash; press "◀" or "▶" to adjust the minutes (holding down "◀" or "▶" will adjust the minutes quickly);

1.3 Press the "Clock" button again, the day display starts to flash; press "◀" or "▶" to adjust the day of the week (1=Monday, 2=Tuesday, etc.); and

1.4 Press and hold the "Clock" button until clock display stops flashing. The clock settings are saved.

(Note: If there is no button operation for 15 seconds, the clock settings will be automatically saved).

2. Set up timer On time and duration:

Timer On time:

2.1 Press and hold the "Timer" button for 3 seconds to enter timer setup mode, the display will show "--:-- op" (timer start time) ;

2.2 Press and hold "On" or "Off" button to change the day (1=Monday, 2=Tuesday, etc.);

2.3 Press and hold the "Timer" button for 3 seconds to enter timer setup mode, the display will show "--:-- op" (timer start time) ;

2.4 When the display hour is flashing, press "◀" and "▶" to adjust the hours, (holding down "◀" or "▶" will adjust the hours quickly);

2.5 Press the "Timer" button again, the minute display starts to flash; press "◀" or "▶" to adjust the minutes (holding down "◀" or "▶" will adjust the minutes quickly);

Once the Auto On time is set up, proceed to set up the timer On duration (delay time):

2.6 Press the "Timer" button again, the display will show "--:-- du" (timer On duration);

2.7 When the display minute is flashing, press "◀" and "▶" to adjust the minutes, (holding down "◀" or "▶" will adjust the minutes quickly);

2.8 Press the "Timer" button again, the second display starts to flash; press "◀" or "▶" to adjust the seconds (holding down "◀" or "▶" will adjust the seconds quickly);

Once timer on time and duration are setup, there are three options:

Press "Off" button to start setting up the next timer On time and duration, or

Press "On" button to go back to modify the previous timer On time and duration, or

Press and hold the "Timer" button until clock display stops flashing. The timer settings are saved.

(Note: If there is no button operation for 15 seconds, the timer settings will be automatically saved).

The longest timer duration for BRT-481 is 90 minutes. If a longer timer On period is needed, please use overlapping timer periods, i.e., the next timing period starts before the last timing period is finished.

3. Delete timer settings

Press the "Timer" button and hold for 3 seconds to enter into the timer setup mode. Press "ON" or "OFF" until the timing period to be deleted displays. Then, press "◀" or "▶" to set the time on time to "--:--op" and set the timer duration to "--:--du". The timing period is deleted.

4. Password settings

- 4.1 Set Password: Press and hold the "Clock" button 3 seconds until the hour position flashes, then press the "Clock" button five times to have the display show --:--P1. Press "◀" or "▶" to set the password. Press the "Clock" button again to have the display show --:--P2. Press "◀" or "▶" to set the password identical to P1 to confirm the password. Press and hold the "Clock" button for 3 seconds to save the password. The password will come into affect after 180s.
- 4.2 After setting the password, pressing any button will have the display shown --:--PR. Press "◀" or "▶" to enter the right password, and then press the "Clock" button to enter the operation mode.
- 4.3 Delete the password: Press and hold the "Clock" button 3 seconds until the hour position flashes, then press the "Clock" button five times to have the display show P1. Press "◀" or "▶" to adjust the password setting back to --:--P1. Press the "Clock" button again to have the display show P2, then Press "◀" or "▶" to adjust the password setting back to --:--P2. Press and hold the "Clock" button for 3 seconds to save the setting. The password has been deleted.
- 4.4 In case the password is forgotten, please **talk to our sales representatives**.

BRT-481B Timer Socket Setup:

1. Set up the clock:

1.1 Press the "Clock" button and hold for 3 seconds to enter the clock setup mode, the hour display starts to flash; press "◀" or "▶" to adjust the hours (holding down "◀" or "▶" will adjust the hours quickly);

1.2 Press the "Clock" button again, the minute display starts to flash; press "◀" or "▶" to adjust the minutes (holding down "◀" or "▶" will adjust the minutes quickly);

1.3 Press the "Clock" button again, the day display starts to flash; press "◀" or "▶" to adjust the day of the week (1=Monday, 2=Tuesday, etc.); and

1.4 Press and hold the "Clock" button until clock display stops flashing. The clock settings are saved.

(Note: If there is no button operation for 15 seconds, the clock settings will be automatically saved).

2. Set up timer On time and timer Off time:

Timer On time:

2.1 Press and hold the "Timer" button for 3 seconds to enter timer setup mode, the display will show "--:-- op" (timer start time) ;

2.2 Press and hold "On" or "Off" button to change the day (1=Monday, 2=Tuesday, etc.);

2.3 Press and hold the "Timer" button for 3 seconds to enter timer setup mode, the display will show "--:-- op" (timer start time) ;

2.4 2.2 When the display hour flashing, press "◀" and "▶" to adjust the hours, (holding down "◀" or "▶" will adjust the hours quickly);

2.5 2.3 Press the "Timer" button again, the minute display starts to flash; press "◀" or "▶" to adjust the minutes (holding down "◀" or "▶" will adjust the minutes quickly);

Once the Auto On time is set up, proceed to set up the timer Off time:

2.6 2.4 Press the "Timer" button again, the display will show "--:-- cl" (timer Off time);

2.7 2.5 When the display hour flashing, press "◀" and "▶" to adjust the hours, (holding down "◀" or "▶" will adjust the hours quickly);

2.8 2.6 Press the "Timer" button again, the minute display starts to flash; press "◀" or "▶" to adjust the minutes (holding down "◀" or "▶" will adjust the minutes quickly);

Once timer On time and timer Off time are setup, there are three options:

Press "Off" button to start setting up the next timer On time and timer off time, or



Press "On" button to go back to modify the previous timer On time and timer off time,

or

Press and hold the "Timer" button until clock display stops flashing. The timer settings are saved.

(Note: If there is no button operation for 15 seconds, the timer settings will be automatically saved).

3. Delete timer settings

Press the "Timer" button and hold for 3 seconds to enter into the timer setup mode. Press "ON" or "OFF" until the time period to be deleted displays. Then, press "" or "" to set the time on time to "--:--op" and set the timer off time to "--:--cl". The timer period will be deleted.

How to Order:

Please contact us: Shenzhen Asia Bright Co., Ltd.
Floor 2nd~3rd, Building E, North Area No.2 of Shangxue
Science Park, Bantian, Shenzhen, China
Tel: +86-755-89748200 +86-755-89748211
Email: sales@a-brt.com Website: www.a-brt.com