

## Product Descriptions

### Push Button Timer Switch (No Neutral Required)

**Model #:** BRT-415

(Please visit our website [www.a-brt.com](http://www.a-brt.com) for more info)



#### **Features:**

BRT-415 is a push button timer switch which is controlled by a micro controller unit and has timing capability for one load. It is designed for easy installation and retrofit, directly fit into standard wall box with no need for the neutral.

- Load power up to 2000W;
- 8 different delay-off time settings from 2 minutes to one hour, adjustable by user using dip switches;
- Manual override. Easy to use. A gentle push will turn on or turn off the load;
- Good for all kind of loads (an additional adaptor is needed for capacitive loads);
- ABS-V0 flame resistance material; and
- Classical 86 series design and high quality build.

#### **Front View and Back View:**

Fig. 1 and Fig. 2 show the front view and the back view of BRT-415 push button timer switches respectively. It has a push button and an LED light on its front, and terminal blocks and dip switches on its back. The LED light makes it easy to find the switch even in the dark.



**Fig. 1** Front View



**Fig. 2** Back View

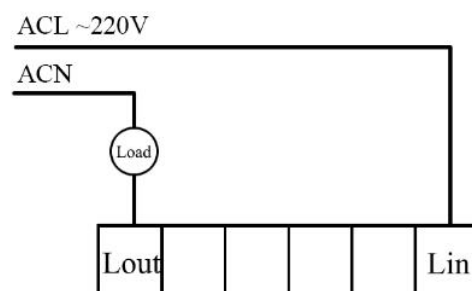
### Specification Parameters:

Input Voltage	220~240V(50Hz/60Hz)	Operating Temperature	-20℃~55℃
Wattage	2000W	Relative Humidity	No-condensation 20-90% RH
Mounting Hole Spacing	60mm	Matching Box	75mm x 75mm x 50mm
Dimension	86mm x 86mm x 43mm	Weight	72g

### Wiring Diagram and Installation Guide:

BRT-415 push button timer switch only requires hot wire for installation:

Hot wire (ACL): Coming from the power line with 220V;  
Load wire: Going to the load.

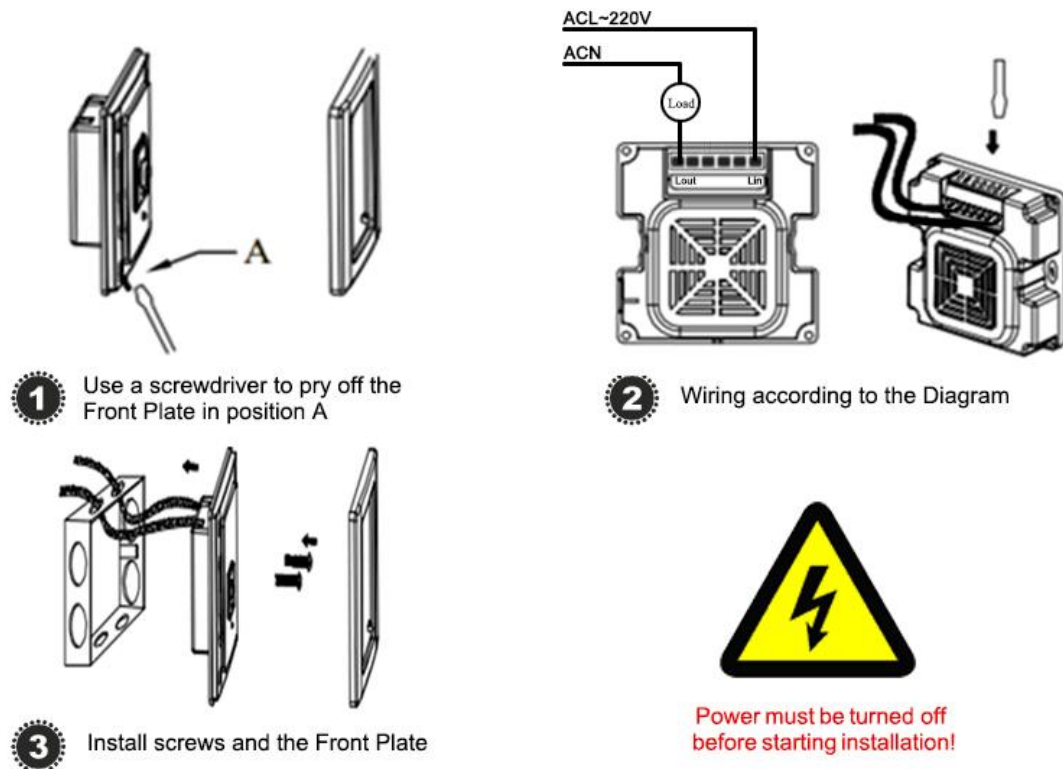


**Fig. 3** BRT-415 Wiring Diagram

**Warning:** Please make sure power is turned off before starting installation!

Fig. 3 shows the wiring diagram and Fig. 4 shows the step-by-step installation instructions. There are three easy steps:

- Step one: Use a screwdriver to pry off the front plate in position A;
- Step two: Wiring according to the diagram and the labelled ports of the switch; and
- Step three: Install the switch to the wall box using screws and put back the front plate.



**Fig. 4** BRT-415 Installation Guide

#### **BRT-415 Operation Guide:**

- Set up delay-off function: There are 4 dip switches on the back of BRT-415 timer switch, as shown in Fig. 5. These dip switches are used to set the delay-off time to 8 settings based on different combinations.



#### *Product Description of BRT-415*

Shenzhen Asia Bright Co., Ltd.

Floor 2<sup>nd</sup>~3<sup>rd</sup>, Building E, North Area No.2 of Shangxue Science Park, Bantian, Shenzhen, China

[www.a-brt.com](http://www.a-brt.com). [sales@a-brt.com](mailto:sales@a-brt.com).

© 2022 All rights reserved. Subject to change without notices.

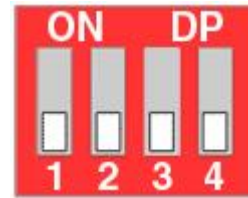
**Fig. 5** Dip Switches for Setting up Delay-off Time

Fig. 6 shows all the dip switches are in “off” positions. Each combination corresponds to a delay off setting.

0001	delay off time = 2 minutes
1001	delay off time = 5 minutes
0101	delay off time = 10 minutes
1101	delay off time = 20 minutes
0011	delay off time = 30 minutes
1011	delay off time = 40 minutes
0111	delay off time = 50 minutes
1111	delay off time = 60 minutes

0 = off and 1 = on

(Other factory settings are available. Please talk to our sales representatives).



**Fig. 6** Dip Switches in 0000 Positions

- Switch on/off the load: Once the delay-off time is set up, pushing the button on the front will turn on the load. The load will be automatically turned off after the delay-off time runs out.

During the delay-off time countdown, pushing the button will turn off the load immediately.

### Applications:

BRT-415 push button timer switch can be used for automatically turning on and/or turning off various loads such as fans, lights, appliances, or other kinds of electrical equipment, especially for high power loads. They are perfect for saving energy and bringing convenience and safety to our daily life and work.

They have wide applications at various locations such as homes, hotels, schools, laboratories, hospitals, offices, etc.

### How to Order:

Please contact us: Shenzhen Asia Bright Co., Ltd.  
Floor 2<sup>nd</sup>~3<sup>rd</sup>, Building E, North Area No.2 of Shangxue  
Science Park, Bantian, Shenzhen, China  
Tel: +86-755-89748200 +86-755-89748211  
Email: [sales@a-brt.com](mailto:sales@a-brt.com) Website: [www.a-brt.com](http://www.a-brt.com)

*Product Description of BRT-415*

Shenzhen Asia Bright Co., Ltd.  
Floor 2<sup>nd</sup>~3<sup>rd</sup>, Building E, North Area No.2 of Shangxue Science Park, Bantian, Shenzhen, China  
[www.a-brt.com](http://www.a-brt.com). [sales@a-brt.com](mailto:sales@a-brt.com).

© 2022 All rights reserved. Subject to change without notices.