

Product Descriptions

Touch Pad Timer Switch (Neutral Required)

Model #: BRT-414

(Please visit our website www.a-brt.com for more info)



Features:

BRT-414 is a touch pad timer switch which is controlled by a micro controller unit and has timing capability for one load. It is designed for easy installation and retrofit, directly fit into standard wall box where both hot wire and neutral wire are present.

- Load power up to 2000W;
- 8 different delay-off time from 2 minutes to one hour, adjustable by user using dip switches;
- Manual override. Easy to use. A gentle touch will turn on or turn off the load;
- Good for all kind of loads;
- ABS-V0 flame resistance material; and
- Classical 86 series design and high quality build.

Front View and Back View:

Fig. 1 and Fig. 2 show the front view and the back view of BRT-414 touch pad timer switches respectively. It has a metal touch pad and an LED light on its front, and terminal blocks and dip switches on its back. The LED light makes it easy to find the switch even in the dark.



Fig. 1 Front View



Fig. 2 Back View

Specification Parameters:

Input Voltage	220~240V(50Hz/60Hz)	Operating Temperature	-20℃~55℃
Wattage	2000W	Relative Humidity	No-condensation 20-90% RH
Mounting Hole Spacing	60mm	Matching Box	75mm x 75mm x 50mm
Dimension	86mm x 86mm x 43mm	Weight	72g

Wiring Diagram and Installation Guide:

BRT-414 touch pad timer switch requires both the hot wire and the neutral wire for installation:

Hot wire (ACL): Coming from the power line with 220V;

Neutral wire (ACN): Usually coming with the hot wire; and

Load wires: Going to the loads.

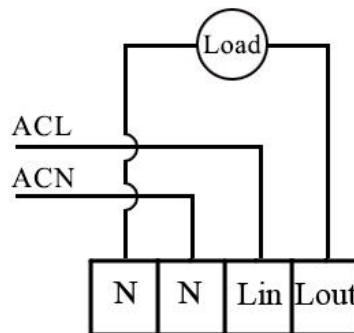


Fig. 3 BRT-414 Wiring Diagram

Warning: Please make sure power is turned off before starting installation!

Fig. 3 shows the wiring diagram and Fig. 4 shows the step-by-step installation instructions. There are three easy steps:

- Step one: Use a screwdriver to pry off the front plate in position A;
- Step two: Wiring according to the diagram and the labelled ports of the switch; and
- Step three: Install the switch to the wall box using screws and put back the front plate.

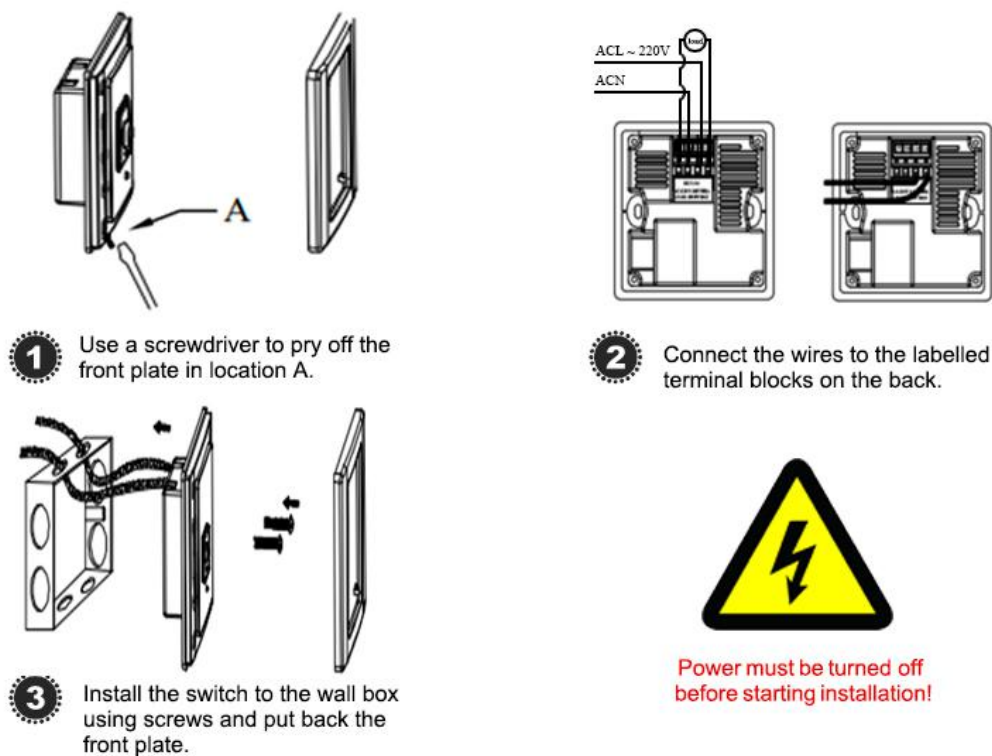


Fig. 4 BRT-414 Installation Guide

BRT-414 Operation Guide:

- Set up delay-off function: The 4 dip switches on the back of BRT-414 timer switch are used to set the delay-off time to 8 settings based on different combinations. Fig. 5 shows all the dip switches are in “off” positions. Each combination corresponds to a delay off setting.

0001	delay off time = 2 minutes
1001	delay off time = 5 minutes
0101	delay off time = 10 minutes
1101	delay off time = 20 minutes
0011	delay off time = 30 minutes
1011	delay off time = 40 minutes
0111	delay off time = 50 minutes
1111	delay off time = 60 minutes
0 = off and 1 = on	

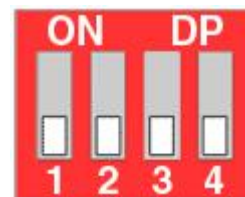


Fig. 5 Dip Switches in 0000 Positions

(Other factory settings are available. Please talk to our sales representatives).

- Switch on/off the load: Once the delay-off time is set up, touching the metal pad on the front will turn on the load. The load will be automatically turned off after the delay-off time runs out.

During the delay-off time countdown, touching the metal pad will turn off the load immediately.

Applications:

BRT-414 touch pad timer switch can be used for automatically turning on and/or turning off various loads such as fans, lights, appliances, or other kinds of electrical equipment, especially for high power loads. They are perfect for saving energy and bringing convenience and safety to our daily life and work.

They have wide applications at various locations such as homes, hotels, schools, laboratories, hospitals, offices, etc.

How to Order:

Please contact us: Shenzhen Asia Bright Co., Ltd.
Floor 2nd~3rd, Building E, North Area No.2 of Shangxue
Science Park, Bantian, Shenzhen, China
Tel: +86-755-89748200 +86-755-89748211
Email: sales@a-brt.com Website: www.a-brt.com