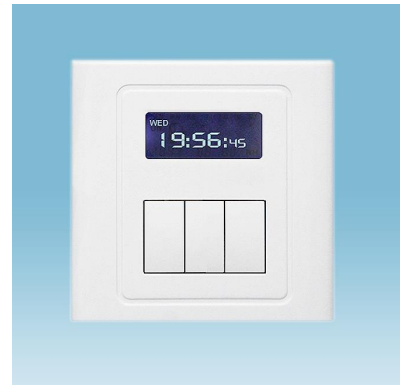


Timer Switch with Daily Multiple Period Settings (Neutral Required)

Model #: BRT-412



Features:

BRT-412 is the most advanced timer switch. It is controlled by a micro controller unit and has very accurate timing capability. It is designed for easy installation and retrofit, directly fit into standard wall box where both hot wire and neutral wire are present.

- Three buttons for easy operation and controls three loads;
- Hidden panel of 9 keypads for setting up timer to prevent inadvertent changes;
- Up to 16 preset timing periods with precise On and Off time each day;
- LCD display showing the current clock time, timing period #, and the current status of the switch;
- Good for all kinds of loads (Resistive, inductive, and capacitive);
- ABS-V0 flame resistance material; and
- Classical 86 series design and high quality build.

Front View, Back View, and Hidden Panel

Fig. 1 and Fig. 2 show the front view and the back view of the wall mount unit of BRT-412 timer switch respectively.



Fig. 1 Front View



Fig. 2 Back View

Product Description of BRT-412

Shenzhen Asia Bright Co., Ltd.

Floor 2nd~3rd, Building E, North Area No.2 of Shangxue Science Park, Bantian, Shenzhen, China

www.a-brt.com. sales@a-brt.com.

© 2022 All rights reserved. Subject to change without notices.

As shown in Fig. 1, BRT-412 timer switch has an LCD display and three On/Off buttons on the front. The LCD display shows the current time and the current status of the switch. The On/Off buttons are used for turning on or turning off three loads respectively. BRT-412 timer switch also has wiring terminal blocks on its back.

When the On/Off button is pressed,

The display shows On and the load #, and the load will be turned on immediately; and

When the On/Off button is pressed again,

If there is no timing period being set, the load will be turned off immediately and the display will show Off and the load #, and;

If there is timing period being set, the load will be turned on automatically during the preset timing period. Press the On/Off button will cancel the timing operation and turn off the load immediately.



Fig. 3 Hidden 9 Keypad Panel

As shown in Fig. 3, the front plate can be flipped down from the top edge. A 9 keypad panel hidden behind the front plate is used for setting up the timer. Please refer to “BRT-412 Timer Switch Setup” for details.

Specification Parameters:

Input Voltage	220~240V(50Hz/60Hz)	Operation Environment	No-condensation 20-90% RH, -20℃~55℃
Wattage	1000W/Load	Load type	All Types*
Mounting Hole Spacing	60mm	Matching Box	75mm x 75mm x 50mm
Wall Mount Unit Dimension	86mm x 86mm x 38mm	Wall mount Unit Weight	135g

Wiring Diagram and Installation Guide:

BRT-412 timer switch only requires both the hot wire and the neutral wire for installation:

Hot wire (ACL): Coming from the power line with 220V;

Neutral wire (ACN): Usually coming with the hot wire; and

Load wires: Going to the loads.

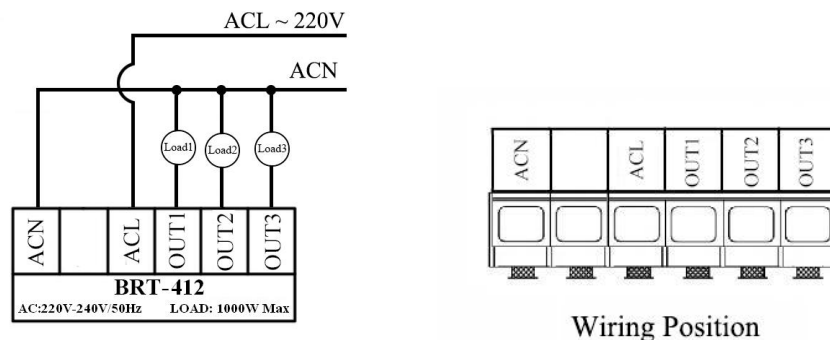


Fig. 4 Wiring Diagram of Wall Mount Unit

Warning: Please make sure power is turned off before starting installation!

Fig. 4 shows the wiring diagram and Fig. 5 shows the step-by-step installation instructions.

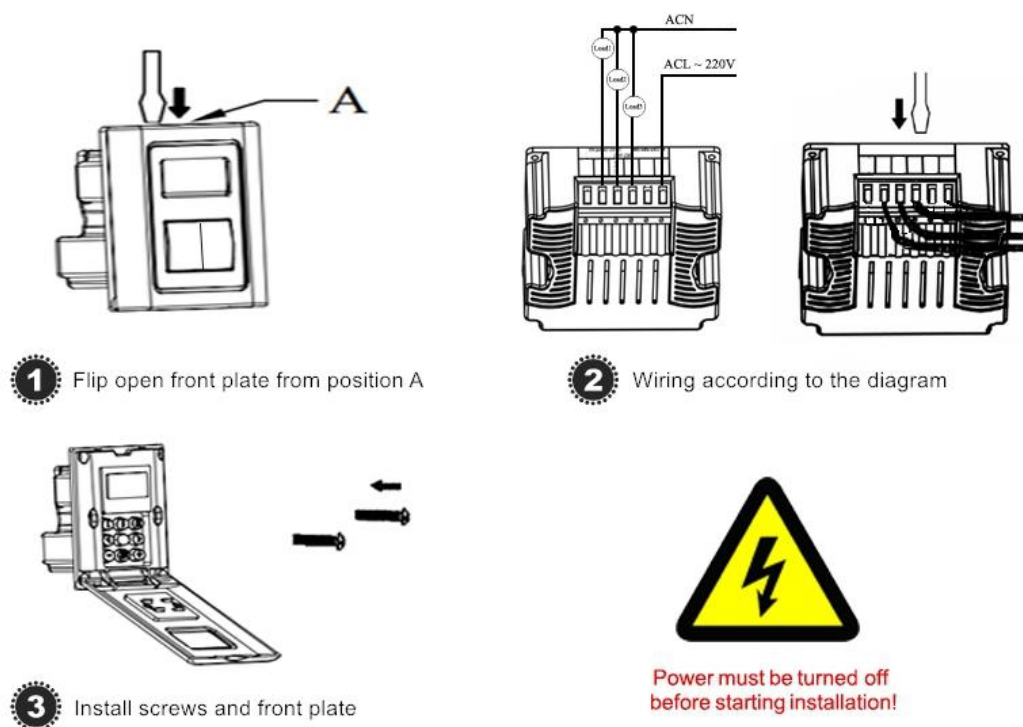


Fig. 5 Installation Guide of Wall Mount Unit

There are three easy steps:

Product Description of BRT-412

Shenzhen Asia Bright Co., Ltd.

Floor 2nd~3rd, Building E, North Area No.2 of Shangxue Science Park, Bantian, Shenzhen, China

www.a-brt.com. sales@a-brt.com.

© 2022 All rights reserved. Subject to change without notices.

- Step one: Flip open front plate from position A;
- Step two: Wiring according to the diagram and the labelled ports of the switch; and
- Step three: Install screws and front plate.

BRT-412 Timer Switch Setup:

1. Power the switch with 220 voltages: following the wiring diagram and Installation Guide.
2. **Set up Clock Time:** Press and hold the **SET** button until the displayed hours flash. Press – or + to adjust the hours. Press the **SET** button again, the displayed minutes will flash, and then press – or + to adjust the minutes. Press the **SET** button again, the displayed day of the week will flash, and then press – or + to adjust the day. Finally, press and hold the SET button to save the settings.

3. **Set up Timing Period for the First Load:**

3-1. Set up the “On” time: Press and hold the **I** button until the display shows “ON” and “01” and the displayed hours flash. Press – or + to adjust the required “on” hours. Press **SET** button, the displayed minutes flash, and use – or + to adjust the required “on” minutes; and

3-2. Set up the “Off” time: Right after setting up the “on” time, press **SET** button again, and the display shows “OFF” and “01” and the displayed hours flash. Press – or + to adjust the required “off” hours. Press **SET** button again, the displayed minutes flash, and use – or + to adjust the required “off” minutes.

(During setup step 3-1 and 3-2, hold the – or + will adjust the digits quickly.)

At this point, both the “on” time and the “off” time have been set up for timing period #1.

3-3. Set up more timing periods: Right after setting up the first timing period, pressing “◀” or “▶” will enter setting up other timing periods. Follow the procedures above to set up the timing periods accordingly. Up to 16 timing periods can be set up.

Finally, press and hold the **SET** button to save the settings or the settings will be saved automatically if there is no keypad operation for 15 seconds.

4. **Set up Timing Period for the Second Load:**

Pressing and holding the **II** button will start setup for the second load. Follow step 3-1 through 3-3 to set up its timing periods accordingly.

5. **Set up Timing Period for the Third Load:**

Product Description of BRT-412

Shenzhen Asia Bright Co., Ltd.

Floor 2nd~3rd, Building E, North Area No.2 of Shangxue Science Park, Bantian, Shenzhen, China

www.a-brt.com. sales@a-brt.com.

© 2022 All rights reserved. Subject to change without notices.

Pressing and holding the **III** button will start setup for the third load. Follow step 3-1 through 3-3 to set up its timing periods accordingly.

6. **Change or Delete Timing Period:** If you want to delete a timing period, follow the above steps to change the settings to “--:--”.

Applications:

BRT-412 timer switch is used for automatically turning on and/or turning off various loads such as fans, lights, appliances, or other kinds of electrical equipment. They are perfect for saving energy and bringing convenience and safety to our daily life and work.

They have wide applications at various locations such as homes, schools, laboratories, hospitals, offices, etc. The typical application scenes include:

Schools: Automatically ring the bells according to a fixed timetable to relieve manual intervention.

Hospitals or Laboratories: Automatically turn on and turn off UV disinfection equipment to isolate operators from harmful UV exposure.

Farms: Automatically turn on or turn off breeding equipment or lighting equipment for animals.

How to Order:

Please contact us: Shenzhen Asia Bright Co., Ltd.
Floor 2nd~3rd, Building E, North Area No.2 of Shangxue
Science Park, Bantian, Shenzhen, China
Tel: +86-755-89748200 / 89748211
Email: sales@a-brt.com Website: www.a-brt.com