

Product Descriptions

PIR Vacancy Sensor Switch (Neutral Required)

Model #: BRT-321

(Please visit our website www.a-brt.com for more info)



Features:

BRT-321 is a vacancy sensor switch which utilizes passive infrared (PIR) sensor to detect the heat (in the form of infrared energy) from people moving within a space. It can determine when a space is occupied and turns on or turns off the loads automatically. It is designed for easy installation and retrofit, directly fit into standard wall box where both hot wire and neutral wire are present.

- Three touch pads to control up to 3 loads;
- Manual override;
- Adjustable delay-off time from 1 minute to 20 minutes
- Good for all kinds of loads;
- ABS-V0 flame resistance material; and
- Classical 86 series design and high quality build.

Front View and Back View:

Fig. 1 and Fig. 2 show the front view and the back view of BRT-321 PIR vacancy sensor switch respectively.



Fig. 1 Front View**Fig. 2** Back View

Besides the PIR lens, BRT-321 PIR vacancy sensor switch has an LED power indicator and three touch pads on its front., and terminal blocks on its back.

Specification Parameters:

Input Voltage	220~240V(50Hz/60Hz)	Operation Environment	No-condensation 20-90% RH, -20℃~40℃
Wattage	Resistive: 1000W/Load Capacitive: 500W/Load Inductive: 500W/Load	Working Distance	5m
Mounting Hole Spacing	60mm	Matching Box	75mm x 75mm x 50mm
Dimension	86mm x 86mm x 43mm	Weight	95g

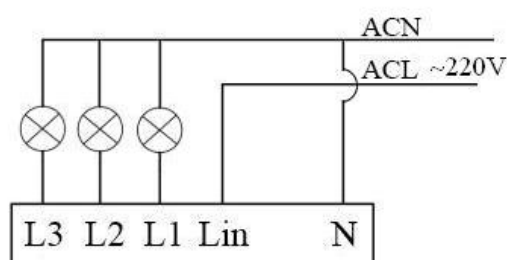
Wiring Diagram and Installation Guide:

BRT-321 vacancy sensor switch require both hot wire and neutral wire for installation:

Hot wire (ACL): Coming from the power line with 220V;

Neutral wire (ACN): Usually coming with the hot wire; and

Load wires: Going to the load.

**Fig. 3** BRT-321 Wiring Diagram

Warning: Please make sure power is turned off before starting installation!

Fig. 3 shows the wiring diagram and Fig. 4 shows the step-by-step installation instructions. There are three easy steps:

Step one: Use a screwdriver to pry off the front plate in position A;

Step two: Wiring according to the diagram and the labelled ports of the switch; and

Product Description of BRT-321

Page 2 of 4

Shenzhen Asia Bright Co., Ltd.

Floor 2nd~3rd, Building E, North Area No.2 of Shangxue Science Park, Bantian, Shenzhen, China

www.a-brt.com. sales@a-brt.com.

© 2022 All rights reserved. Subject to change without notices.

Step three: Install screws and front plate.

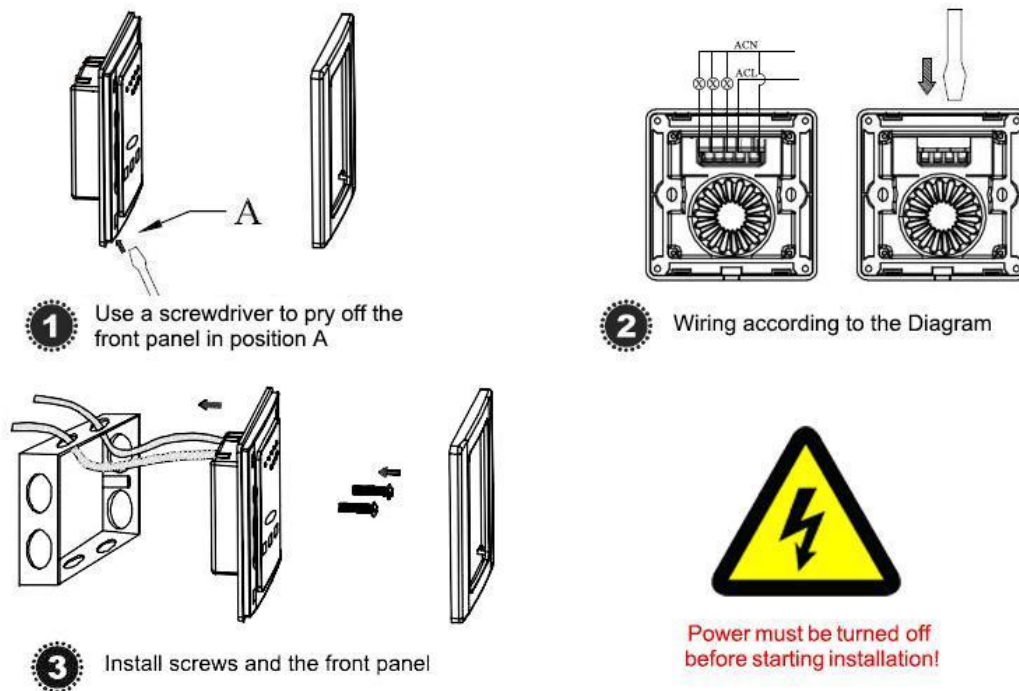


Fig. 4 BRT-321 Installation Guide

Cautions:

1. Avoid mounting the sensor switch close to air vents, as the vibration and air flow can reduce the effectiveness of the sensor switch;
2. Avoid installing the sensor switch in an electrical circuit which has other frequent on/off switch or appliance, as those on/off actions could cause false triggers.

BRT-321 Operation Guide:

BRT-321 PIR vacancy sensor switch needs a warm-up time about two minutes before it can operate properly. For the first time operation, the user can set the delay-off time by using 3 dip switches on its top side, as shown in Fig. 5.

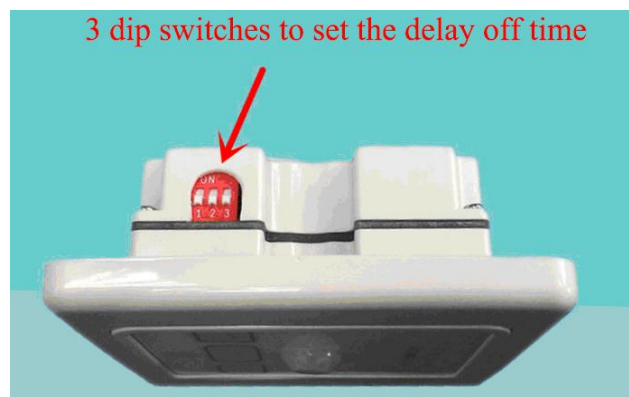
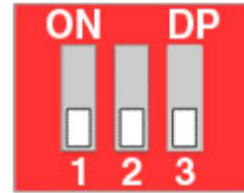


Fig. 5 Dip Switches for Setting up Delay-off Time

Adjust the delay off time

The 3 dip switches are used to set the delay off time to 4 settings based on different combinations. Fig. 6 shows all the dip switches are in “off” positions. Each combination corresponds to a delay off setting.

000	delay-off time = 1 minutes
100	delay-off time = 5 minutes
010	delay-off time = 10 minutes
110	delay off time = 20 minutes



0 = off and 1 = on

Fig. 6 Dip Switches in 000 Positions

(Other factory settings are available. Please talk to our sales representatives).

Turn on or turn off loads manually: Pressing each touch pad (LAMP 1, LAMP 2, or LAMP 3) will turn on the load, and pressing it again will turn off the load.

Applications:

BRT-321 PIR vacancy sensor switch can be used for automatically turning off various loads such as lights, fans, appliances, or other kinds of electrical equipment. They are perfect for saving energy and bringing convenience and safety to our daily life and work.

They have wide applications at various locations such as stairwells, corridors, washrooms, offices, conference rooms in homes, schools, laboratories, hospitals, offices, etc.

How to Order:

Please contact us: Shenzhen Asia Bright Co., Ltd.
Floor 2nd~3rd, Building E, North Area No.2 of Shangxue
Science Park, Bantian, Shenzhen, China
Tel: +86-755-89748200 +86-755-89748211
Email: sales@a-brt.com Website: www.a-brt.com