

## Product Descriptions

### Rotary Dimmer Switch with Remote Control

Model # : BRT- 205L-T

(Please visit our website [www.a-brt.com](http://www.a-brt.com) for more info)



#### Features:

BRT-205L-T is a dimmer switch which is controlled by a micro controller unit. In addition to a wall mount rotary unit, it also has a handheld remote control. The wall mount unit is designed for easy installation and retrofit, directly fit into standard wall box with no need for the neutral.

- Leading edge dimming;
- Push button and rotary knob two-in-one for easy on/off and dimming operation;
- Memory function. Lights are always turned on at last setting;
- Good for all lights (an additional adaptor required for LED lights or CFL lights);
- ABS-V0 flame resistance material; and
- Classical 86 series design and high quality build.

#### Front View and Back View:

Fig. 1 and Fig. 2 show the front view and the back view of the BRT-205L-T dimmer switch, respectively. It has a rotary knob and an infrared detector on the front and wiring terminal blocks on the back.



**Fig. 1** Front View



**Fig. 2** Back View

*Product Description of BRT-205L-T*

Shenzhen Asia Bright Co., Ltd.

Floor 2<sup>nd</sup>~3<sup>rd</sup>, Building E, North Area No.2 of Shangxue Science Park, Bantian, Shenzhen, China

[www.a-brt.com](http://www.a-brt.com). [sales@a-brt.com](mailto:sales@a-brt.com).

© 2022 All rights reserved. Subject to change without notices.

BRT-205L-T dimmer switch is design to replace the legacy mechanical dimmers in most homes. It can fit into standard wall box for easy retrofit installation.

#### Specification Parameters:

Input Voltage	220~ 240V(50Hz/60Hz)	Operation Environment	No-condensation 20-90% RH, -20℃~40℃
Wattage	200W	Dimming Range	Incandescent: 0 to 100% Others: depending on lights*
Remote Control Mode	IR	Remote Control Distance	7m
Mounting Hole Spacing	60mm	Matching Box	75mm x 75mm x 50mm
Remote Control Dimension	107mm x 36mm x 14mm	Remote Control Weight	50g
Wall Unit Dimension	86mm x 86mm x 43mm	Wall Unit Weight	100g

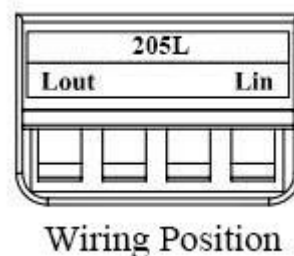
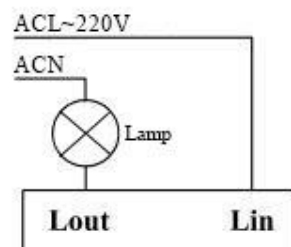
\* For most dimmable LED or CFL lights. The dimming range can vary from light to light or from manufacturer to manufacturer. Dimmable LED lights or CFL lights usually will not achieve as low a light level as incandescent or halogen sources.

#### Wiring Diagram and Installation Guide:

BRT-205L-T dimmer switch only requires two wires for installation:

Hot wire (ACL): Coming from the power line with 220V; and

Load wire: Going to the load.



**Fig. 3** BRT- 205L-T Wiring Diagram

**Warning:** Please make sure power is turned off before starting installation!

Product Description of BRT-205L-T

Shenzhen Asia Bright Co., Ltd.

Floor 2<sup>nd</sup>~3<sup>rd</sup>, Building E, North Area No.2 of Shangxue Science Park, Bantian, Shenzhen, China

[www.a-brt.com](http://www.a-brt.com) [sales@a-brt.com](mailto:sales@a-brt.com)

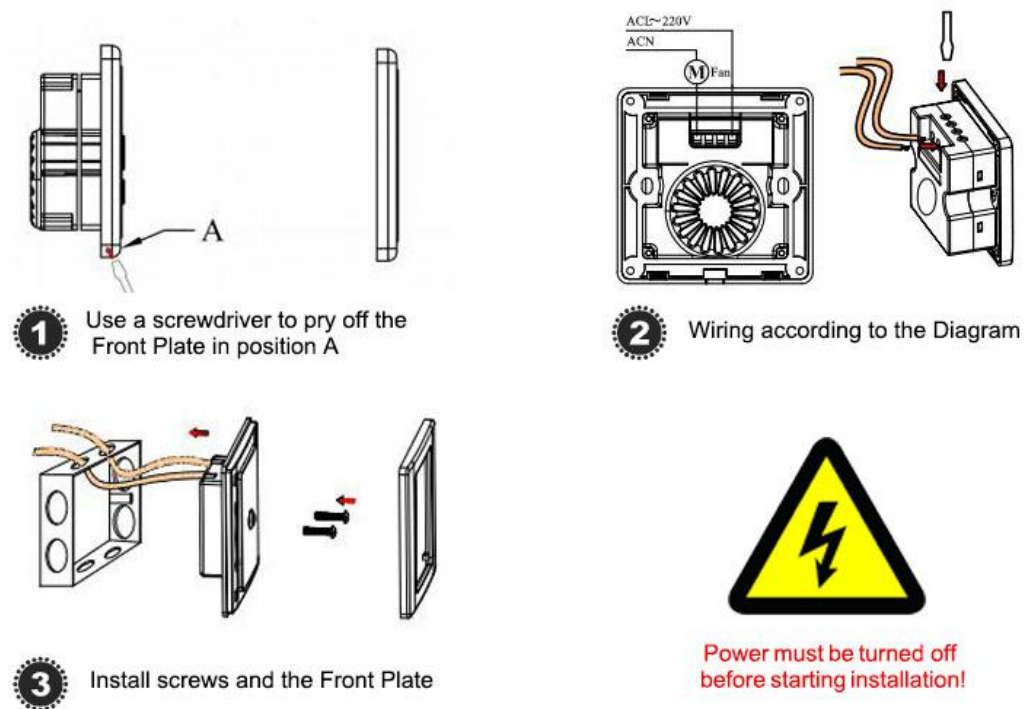
© 2022 All rights reserved. Subject to change without notices.

Fig. 3 shows the wiring diagram and Fig. 4 shows the step-by-step installation instructions. There are three easy steps:

Step one: Pull out the knob, and use a screwdriver to pry off the front plate in position A;

Step two: Wiring according to the diagram and the labelled ports of the switch; and

Step three: Install screws and front plate, and put back the knob.



**Fig. 5** BRT- 205L-T Installation Guide

### **Operation Guide:**

BRT-205L-T dimmer switch can be controlled either using the rotary wall mount unit or the remote control.

#### **Control using wall mount unit:**

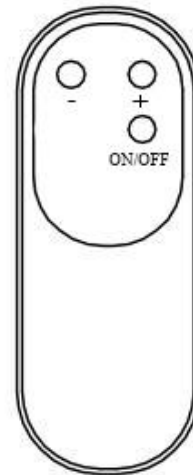
**On/Off:** The rotary knob is a push button as well. Pushing the knob will turn on the light and pushing again will turn off the light.

**Dimming:** Once the light is turned on, rotating the knob clockwise will increase brightness, and rotating the knob counter-clockwise will decrease brightness. When the knob reaches the maximum or minimum of the dimming range, there will be a beep sound.

**Control using remote:** There are three buttons on the remote.

- ON/OFF: Pressing once will turn on the light, and pressing again will turn off the light;
- +: Each pressing will increase the brightness; and
- : Each pressing will decrease the brightness.

When brightness adjustment reaches the maximum or minimum of the dimming range, there will be a beep sound.



### **Applications:**

BRT- 205L-T dimmer switch is designed for all kinds of lights. It is ideal for creating desired lighting mood for different application scenes. The remote control makes lighting control even more convenient.

BRT-205L-T dimmer switch has wide applications at various locations such as homes, restaurants, theatres, etc.

### **How to Order:**

Please contact us: Shenzhen Asia Bright Co., Ltd  
Floor 2<sup>nd</sup>~3<sup>rd</sup>, Building E, North Area No.2 of Shangxue  
Science Park, Bantian, Shenzhen, China  
Tel: +86-755-89748200 +86-755-89748211  
Email: [sales@a-brt.com](mailto:sales@a-brt.com) Website: [www.a-brt.com](http://www.a-brt.com)