

Product Descriptions

Rotary Dimmer Switch

Model #: BRT-205L

(Please visit our website www.a-brt.com for more info)



Features:

BRT-205L is a dimmer switch which is controlled by a micro controller unit. It is designed for easy installation and retrofit, directly fit into standard wall box with no need for the neutral.

- Leading edge dimming;
- Push button and rotary knob two-in-one for easy on/off and dimming operation;
- Memory function. Lights are always turned on at last setting;
- Good for all lights (an additional adaptor required for LED lights or CFL lights);
- ABS-V0 flame resistance material; and
- Classical 86 series design and high quality build.

Front View and Back View:

Fig. 1 and Fig. 2 show the front view and the back view of the BRT-205L dimmer switch, respectively. It has a rotary knob on the front and wiring terminal blocks on the back.



Fig. 1 Front View



Fig. 2 Back View

BRT-205L dimmer switch is design to replace the legacy mechanical dimmers in most homes. It can fit into standard wall box for easy retrofit installation.

▶ Specification Parameters:

Input Voltage	220~240V(50Hz/60Hz)	Operation Environment	No-condensation 20-90% RH, -20℃~40℃
Wattage	150W	Dimming Range	Incandescent: 0 to 100% Others: depending on lights*
Mounting Hole Spacing	60mm	Matching Box	75mm x 75mm x 50mm
Dimension	86mm x 86mm x 43mm	Weight	112g

* For most dimmable LED or CFL lights. The dimming range can vary from light to light or from manufacturer to manufacturer. Dimmable LED lights or CFL lights usually will not achieve as low a light level as incandescent or halogen sources.

▶ Wiring Diagram and Installation Guide:

BRT-205L dimmer switch only requires two wires for installation:

Hot wire (ACL): Coming from the power line with 220V; and
Load wire: Going to the load.

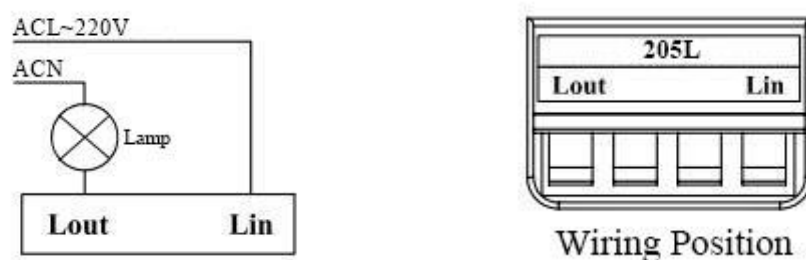


Fig. 3 BRT-205L Wiring Diagram

Warning: Please make sure power is turned off before starting installation!

Fig. 3 shows the wiring diagram and Fig. 4 shows the step-by-step installation instructions. There are three easy steps:

Step one: Pull out the knob, and use a screwdriver to pry off the front plate in position A;

Product Description of BRT-205L

Shenzhen Asia Bright Co., Ltd.

Floor 2nd~3rd, Building E, North Area No.2 of Shangxue Science Park, Bantian, Shenzhen, China

www.a-brt.com sales@a-brt.com

© 2022 All rights reserved. Subject to change without notices.

Step two: Wiring according to the diagram and the labelled ports of the switch; and

Step three: Install screws and front plate, and put back the knob.

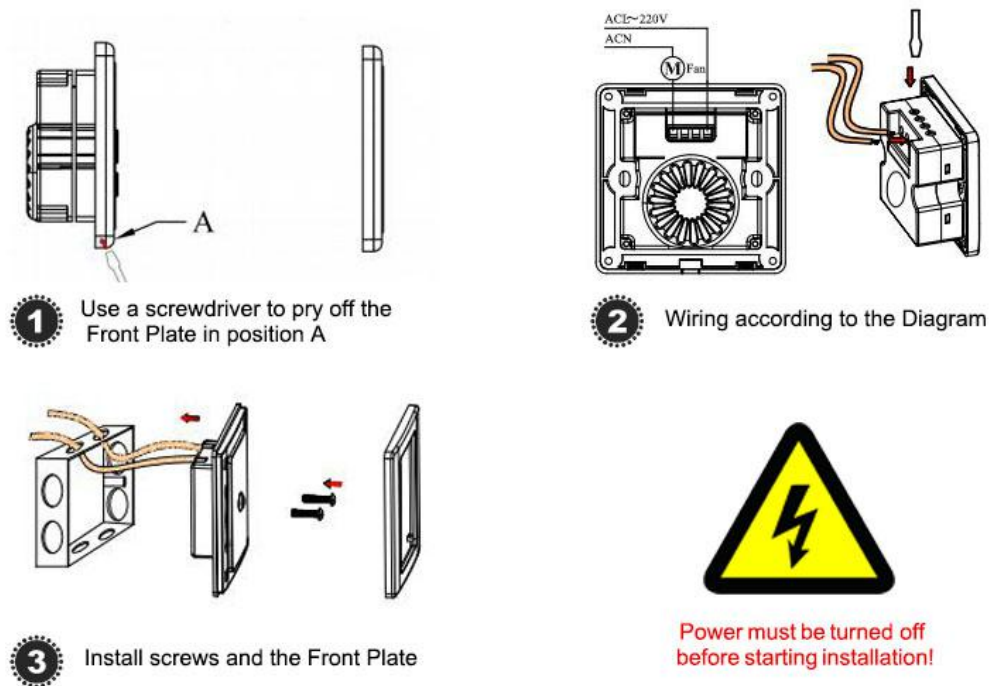


Fig. 4 BRT-205L Installation Guide

BRT-205L Dimmer Switch Operation Guide:

BRT-205L dimmer switch is very easy to operate.

On/Off: The rotary knob is a push button as well. Pushing the knob will turn on the light and pushing again will turn off the light.

Dimming: Once the light is turned on, rotating the knob clockwise will increase brightness, and rotating the knob counter-clockwise will decrease brightness.

Applications:

BRT-205L dimmer switch is designed for all kinds of lights. It is ideal for creating desired lighting mood for different application scenes.

BRT-205L dimmer switch has wide applications at various locations such as homes, restaurants, theatres, etc.

How to Order:

Please contact us: Shenzhen Asia Bright Co., Ltd
Floor 2nd~3rd, Building E, North Area No.2 of Shangxue
Science Park, Bantian, Shenzhen, China
Tel: +86-755-89748200 +86-755-89748211
Email: sales@a-brt.com Website: www.a-brt.com