

## Product Descriptions

### Timer Switch

**Model #:** BRT-105

(Please visit our website [www.a-brt.com](http://www.a-brt.com) for more info)



#### **Features:**

BRT-105 is a timer switch which has an On/Off button on the front and a keypad panel behind its front plate. The keypad panel is used for setting up the clock and delay off time. This unique design makes it easy to operate, and prevents the timer settings from being changed accidentally. It is also designed for easy installation and retrofit, directly fit into standard wall box.

- Delay off time up to 30 minutes, which can be set accurately to a second;
- LCD display showing the current time and the current status of the switch;
- Operates on AC L and N wiring;
- Good for all kinds of loads (Resistive, inductive, and capacitive);
- ABS-V0 flame resistance material; and
- Classical 86 series design and high quality build.

#### **Front View, Back View and Hidden Panel:**

Fig. 1 and Fig. 2 show the front view and the back view of the BRT-105 timer switch respectively.



**Fig. 1** Front View



**Fig. 2** Back View

As shown in Fig. 1, the BRT-105 timer switch has an LCD display and an On/Off buttons in the front. The LCD display shows the current time and the current status of the switch. The On/Off button is used for turning on or turning off a load.

When the On/Off button is pressed and the display shows On,

The load will be turned on immediately; and

When the On/Off button is presses again and the display will show Off,

If there is no delay off time being set, the load will be turned off immediately; or

If there is delay off time being set, the load will be turned off only after the preset delay off time runs out. Meanwhile, the display will show a “bell” sign. Press the On/Off button will cancel the delay off operation and turn off the load immediately.



**Fig.3** Hidden 9 Keypad Panel

As shown in Fig. 3, the front plate can be flipped down from the top edge. A 9 keypad panel hidden behind the front plate is used for setting up the timer. Please refer to “BRT-105 Timer Switch Setup” for details.

#### **Specification Parameters:**

|                       |                                                          |                       |                                        |
|-----------------------|----------------------------------------------------------|-----------------------|----------------------------------------|
| Input Voltage         | 220~240V(50Hz/60Hz)                                      | Operation Environment | No-condensation 20-90% RH,<br>-20℃~40℃ |
| Wattage               | Resistive: 2000W<br>Inductive: 1000W<br>Capacitive: 400W | Load type             | All Types                              |
| Mounting Hole Spacing | 60mm                                                     | Matching Box          | 75mm x 75mm x 50mm                     |

*Product Description of BRT-105*

Shenzhen Asia Bright Co., Ltd.

Floor 2<sup>nd</sup>~3<sup>rd</sup>, Building E, North Area No.2 of Shangxue Science Park, Bantian, Shenzhen, China

[www.a-brt.com](http://www.a-brt.com). [sales@a-brt.com](mailto:sales@a-brt.com).

© 2022 All rights reserved. Subject to change without notices.

Page 2 of 4

|           |                    |        |     |
|-----------|--------------------|--------|-----|
| Dimension | 86mm x 86mm x 43mm | Weight | 72g |
|-----------|--------------------|--------|-----|

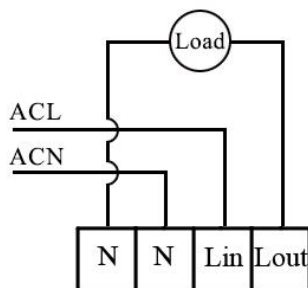
## **Wiring Diagram and Installation Guide:**

BRT-105 timer switch requires both hot wire and neutral wire for installation:

Hot wire (ACL): Coming from the power line with 220V;

Neutral wire (ACN): Usually coming with the hot wire; and

Load wire: Going to the load.



**Fig. 4** BRT-105 Timer Switch Wiring Diagram

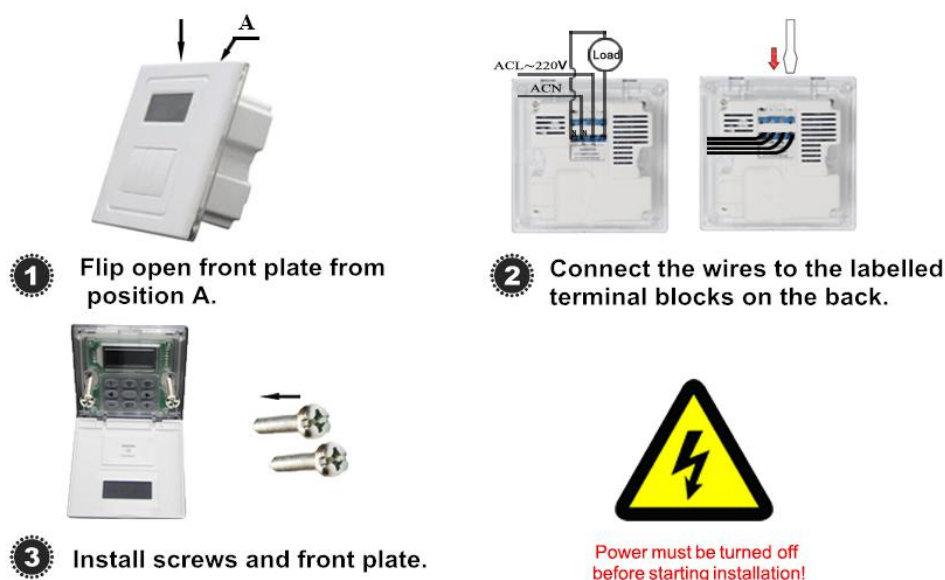
**Warning:** Please make sure power is turned off before starting installation!

Fig. 4 shows the wiring diagram and Fig. 5 shows the step-by-step installation instructions. There are three easy steps:

Step one: Flip open front plate from position A;

Step two: Wiring according to the diagram and the labelled ports of the switch; and

Step three: Install screws and front plate.



**Fig. 5** BRT-105 Timer Switch Installation Guide

### **BRT-105 Timer Switch Setup:**

1. Power the switch with 220 voltages: following the wiring diagram and Installation Guide.
2. Flip down the front plate from the top edge.
3. Set up Time and Date: Press the **SET** button, the displayed hours will flash, and then press **-** or **+** to adjust the hours. Press the **SET** button again, the displayed minutes will flash, and then press **-** or **+** to adjust the minutes. Press the **SET** button again, the displayed date will flash, and then press **-** or **+** to adjust the date. Finally, press the **SET** button to finish and the settings are saved.
4. Set up Delay off Time: The longest delay off time is 30 minutes. Press the **II** button to set the minutes, and then press button **<** or **>** to adjust the minutes. Press the **II** button again to set the seconds, and then press button **<** and **>** to adjust the seconds. Finally, press and hold the **II** button to save the settings or the settings will be saved automatically if there is no keypad operation for 15 seconds.  
Once the settings are finished, flip up and close the front plate. The delay off time can be deleted following Step 2 and Step 5 below.
5. Delete the Delay off Time setting: Press the **II** button to set the minutes to 00 using **-** or **+**, and press the **II** button again to set the seconds to 00 using **-** or **+**. The switch will just have a basic ON/OFF function.

### **Applications:**

BRT-105 timer switch can be used for automatically turning off all kinds of loads such as fans, lights, appliances, or other kinds of electrical equipment. They are perfect for saving energy and bringing convenience and safety to our daily life and work.

The elegant design of BRT-105 timer switch makes it suitable for wide applications at various locations such as homes, schools, laboratories, hospitals, offices, etc., especially for luxurious hotels and high-grade villas.

### **How to Order:**

Please contact us: Shenzhen Asia Bright Co., Ltd  
Floor 2<sup>nd</sup>~3<sup>rd</sup>, Building E, North Area No.2 of Shangxue  
Science Park, Bantian, Shenzhen, China  
Tel: +86-755-89748200    89748211    89748345  
Email: [sales@a-brt.com](mailto:sales@a-brt.com)    Website: [www.a-brt.com](http://www.a-brt.com)