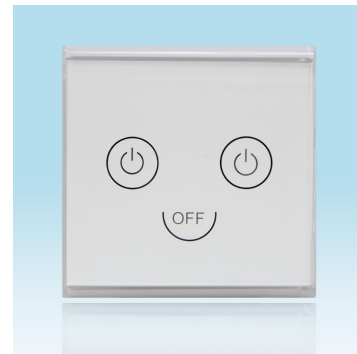


Product Descriptions

Glass Touch Screen Timer Switch

Model #: BRT-109

(Please visit our website www.a-brt.com for more info)



Features:

BRT-109 is a glass touch screen timer switch which is controlled by a micro controller unit and has timing capability for two separate loads. It is designed for easy installation and retrofit, directly fit into standard wall box where both “hot” wire and neutral wire are present.

- High quality glass as face plate, luxury and elegant;
- Control over up to 2 loads. Each load can have a delay-off time of 30 seconds or instant on/off;
- Easy to use. A gentle touch will turn on or turn off the load;
- Good for all kinds of loads (resistive, inductive, or capacitive);
- Can be used as night light. All the buttons are always lit by blue backlights, so they are easy to find even in the dark;
- Costume color and pattern available;
- ABS-V0 flame resistance material; and
- Classical 86 series design and high quality build.

Front View and Back View:

Fig. 1 and Fig. 2 show the front view and the back view of the BRT-109 glass touch screen timer switches respectively.



Fig. 1 Front View



Fig. 2 Back View

Product Description of BRT-109

Shenzhen Asia Bright Co., Ltd.

Floor 2nd~3rd, Building E, North Area No.2 of Shangxue Science Park, Bantian, Shenzhen, China

www.a-brt.com. sales@a-brt.com.

© 2022 All rights reserved. Subject to change without notices.

There are two on/off buttons and one Off button on the front, and there are wiring terminal blocks on the back. The buttons are backlit with blue lights.

Specification Parameters:

Input Voltage	180~250V(50Hz/60Hz)	Operation Environment	No-condensation 20-90% RH, -20℃~55℃
Wattage	Resistive: 1000W/Load Inductive: 500W/Load Capacitive: 200W/Load	Load type	All Types
Mounting Hole Spacing	60mm	Matching Box	75mm x 75mm x 50mm
Dimension	86mm x 86mm x 36mm	Weight	140 g

Wiring Diagram and Installation Guide:

BRT-109 glass touch screen timer switch requires both hot wire and neutral wire for installation:

Hot wire (ACL): Coming from the power line with 220V;
 Neutral wire (ACN): Usually coming with the hot wire; and
 Load wire: Going to the load.

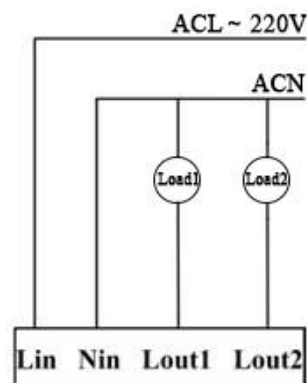


Fig. 3 BRT-109 Wiring Diagram

Warning: Please make sure power is turned off before starting installation!

Fig. 3 shows the wiring diagram and Fig. 4 shows the step-by-step installation instructions. There are three easy steps:

Step one: Use a screwdriver to pry off the front plate in position A;

Product Description of BRT-109

Shenzhen Asia Bright Co., Ltd.

Floor 2nd~3rd, Building E, North Area No.2 of Shangxue Science Park, Bantian, Shenzhen, China

www.a-brt.com. sales@a-brt.com.

© 2022 All rights reserved. Subject to change without notices.

- Step two: Wiring according to the diagram and the labeled ports of the switch; and
- Step three: Install the switch to the wall box using screws and put back the front plate.

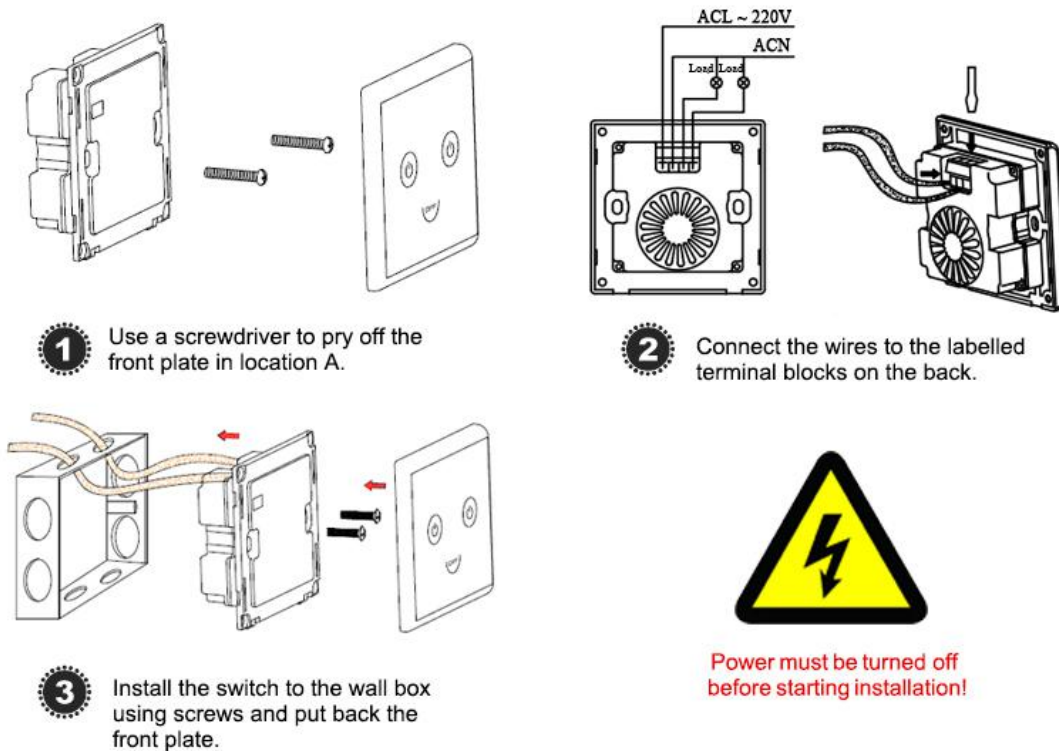


Fig. 4 BRT-109 Installation Guide

BRT-109 Operation Guide:

- **Switch on/off the load:** After BRT-109 is powered on, touching each of the 2 on/off buttons will turn on or turn off the loads respectively, when the delay-off function is not setup. Touching the Off button will turn off all the loads in the same time.

When a load is turned on, the corresponding button will become brighter in blue.

- **Set up delay-off function:** Use a screwdriver to pry off the front plate to access the dip switches as shown in Fig.5. Switching the first two dip switches to on will set up each on/off button for delay-off operation respectively.

The delay-off time is set at 30 seconds at factory. Please talk to our sales representative if other customized settings are required.

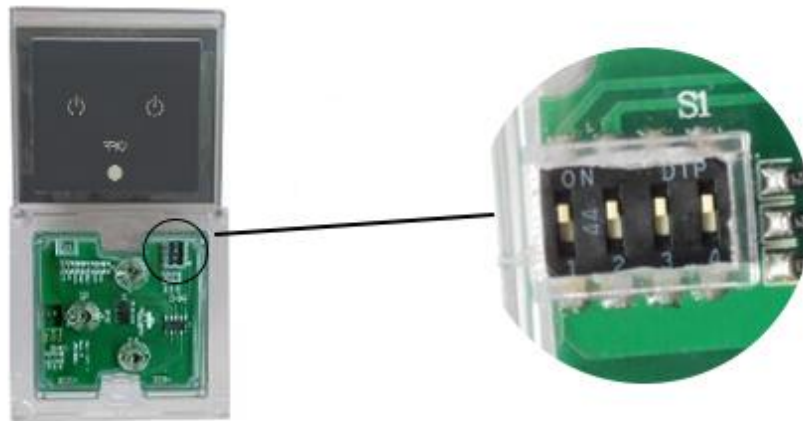


Fig. 5 Dip Switches for Activating Delay-off Time

- **Activate delay-off function:** Once the delay-off function is set up, touching the on/off button once will turn on the load, and touching the on/off button the second time will trigger delay-off for the load. The blue LED indicator will blink until the load is automatically turned off after 30 seconds.

During the delay-off time countdown, touching the On/Off button will turn off the load immediately.

Applications:

BRT-109 glass touch screen timer switch can be used for automatically turning on and/or turning off various loads such as fans, lights, appliances, or other kinds of electrical equipment. They are perfect for saving energy and bringing convenience and safety to our daily life and work.

They have wide applications at various locations such as homes, hotels, schools, laboratories, hospitals, offices, etc.

How to Order:

Please contact us: Shenzhen Asia Bright Co., Ltd
 Floor 2nd~3rd, Building E, North Area No.2 of Shangxue
 Science Park, Bantian, Shenzhen, China
 Tel: +86-755-89748200 +86-755-89748211

Product Description of BRT-109

Shenzhen Asia Bright Co., Ltd.
 Floor 2nd~3rd, Building E, North Area No.2 of Shangxue Science Park, Bantian, Shenzhen, China
www.a-brt.com. sales@a-brt.com.

© 2022 All rights reserved. Subject to change without notices.

Email: sales@a-brt.com Website: www.a-brt.com